



# *Fact Book*

**2008-2009**

*Eleventh Edition*

*Compiled by  
The Office of Institutional Research*

## *Preface*

*The West Virginia Wesleyan College Fact Book is a summary of statistics gathered from various sources throughout the college. I would like to thank all of the many campus departments for their cooperation and assistance without which it would not be possible to provide this document.*

*The purpose of the Fact Book is to provide a useful resource for commonly used information about West Virginia Wesleyan College. The information included in this book comes mainly from management reports and college databases. When viewing the report please pay careful attention to the dates listed on the tables and charts.*

*This is the eleventh edition of the West Virginia Wesleyan College Fact Book. I am always looking for ways to improve both the kinds of data and the presentation of the data included in this document. If you have any questions about the information or suggestion for improvements I would welcome the opportunity to discuss them with you.*

*Tammy J. Crites  
Director of Institutional Research*

*March 2009*

## **Notice of Nondiscrimination**

West Virginia Wesleyan College, a private educational institution, is committed to the principle of equal opportunity for all qualified persons, welcomes students of all backgrounds and takes pride in the diversity of its faculty and staff. It assures students of access to all the privileges, programs and activities generally accorded or made available at the College. West Virginia Wesleyan College strongly supports affirmative action principles and does not discriminate on the basis of creed, religion, national or ethnic origin, age, race, sexual orientation, color, gender or handicap in the administration of its educational programs, admissions policies, financial aid programs, athletics, co-curricular activities or other College administered programs.

# Table of Contents

## **Mission and**

### **Organizational Structure**

West Virginia Wesleyan College Mission Statement and Accreditation	5
West Virginia Wesleyan College Organizational Chart 2008-2009	6
Board of Trustees and Executive Administrative Officers and Faculty Chair and Senate	7

### **Fall 2008 New Students**

New Student Admission Funnel and Academic Profile	9
Freshmen Demographics	10
Freshmen Financial Aid Profile	11

### **Fall 2008 Student Body**

Historical Enrollment	13
Undergraduate Student Headcount History	15
Ethnic and Gender Breakdown	16
Full Time and Part-time Undergraduates Declared Majors	18
Student Organizations	20
NCAA Division II Athletic Programs	21
Yearly Retention Rate	22
Retention and Graduation Rates	23
Degrees Awarded by Major Field of Study	24

### **Faculty and Staff**

Academic and Administrative Employees by Department	27
Faculty Profile	30

### **Financials**

Unrestricted Revenues by Source	32
Current Expenditures by Category	33
Recent Tuition and Fees History	34

### **Comparative Group Data**

Comparative Tuition and Fees	36
Basic Comparative Group Characteristics	37
Selected Comparative Group Benchmarks	38

# *Mission and Organizational Structure*

# WEST VIRGINIA WESLEYAN COLLEGE

## Statement of Mission

West Virginia Wesleyan College challenges its students to a life-long commitment to develop their intellectual, ethical, spiritual, and leadership potential and to set and uphold standards of excellence. Firmly rooted in the liberal arts tradition and closely related to The United Methodist Church, the College is a community of learning based on fundamental Principles formed at the intersections of Christian faith and liberal education: intellectual rigor, self-discovery, human dignity, mutual support, social justice, self-discipline, mental and physical wellness, the appreciation of diversity and the natural world, and the judicious use of resources. The College recognizes and affirms its interdependence with the external communities--local, regional, national and global-- and its covenant with the people of West Virginia to share its educational and cultural resources.

West Virginia Wesleyan College prepares its students through its curriculum of arts and sciences, preprofessional studies, and its rich campus life programs. As a residential, undergraduate institution of higher education, the College aspires to graduate broadly educated men and women who

- Think critically and creatively,
  - Communicate effectively,
    - Act responsibly, and
      - Demonstrate their local and world citizenship through service.

## Wesleyan Accreditation

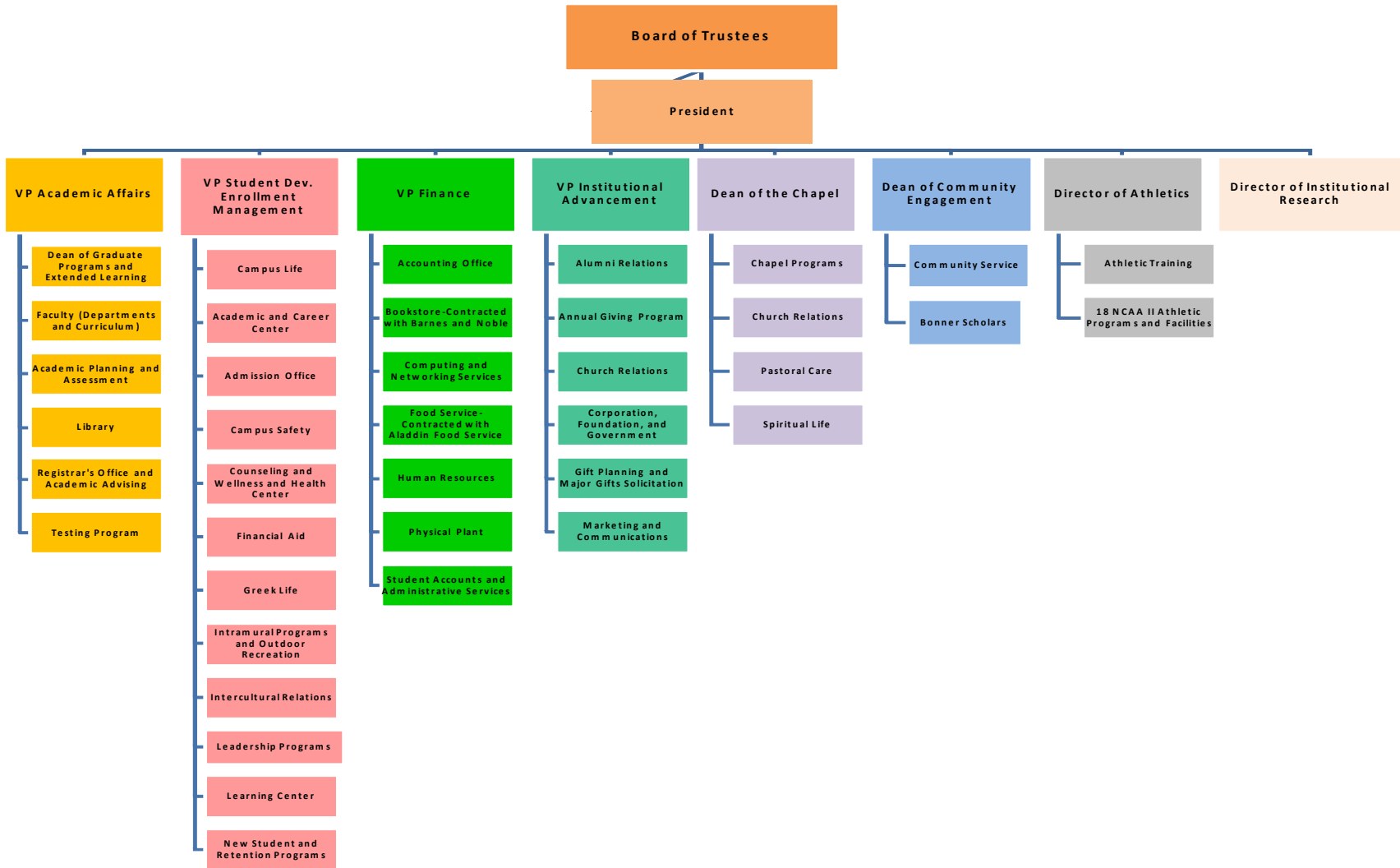
West Virginia Wesleyan is accredited by the Higher Learning Commission, A Commission of the North Central Association of Colleges and Schools and approved by the University Senate of The United Methodist Church. It is a member of the National Association of Schools of Music and is approved by the West Virginia Department of Education and the National Council for the Accreditation of Teachers Education. The College participates in the Interstate Certification Project, whereby a number of states now certify teachers graduating from Wesleyan's Department of Education. The nursing program is accredited by the National League for Nursing Accrediting Commission and approved by the State of West Virginia Board of Examiners for Registered Nurses. The athletic training program is accredited by the Commission of Accreditation of Athletic Training Education Programs. Degree programs offered in business and economics, including the Master of Business Administration program, are accredited by the International Assembly for Collegiate Business Education.

The College holds memberships in the Appalachian College Association, East Central Colleges, The National Association of Independent Colleges and Universities, the American Association of Colleges for Teacher Education, the National Association of Schools and Colleges of the United Methodist Church, Campus Compact, and the Council of Independent Colleges.

Wesleyan's athletic programs are affiliated with the West Virginia Intercollegiate Athletic Association and the National Collegiate Athletic Association, Division II.

# West Virginia Wesleyan College Organizational Chart 2008- 2009

*(as of October 2008)*



**Board of Trustees,  
Administrative Executive Officers and Faculty Senate  
2008-2009  
(as of October)**

***Board of Trustees***

*Lloyd G. Jackson II, Chairman  
Alfred L. Moyè, 1<sup>st</sup> Vice Chair  
Robert L. Allman II, 2<sup>nd</sup> Vice Chair  
K.C. Caldabaugh, 3<sup>rd</sup> Vice Chair  
Frederick H. Leasure, 4<sup>th</sup> Vice Chair  
Roger Brown, 5<sup>th</sup> Vice Chair  
Christine Cox, Secretary  
Pamela M. Balch  
Thomas Bickerton  
Ellis E. Conley  
Randall Crawford  
John D. Esaias  
Charles R. Evans  
William B. Grant  
John L. Griffith  
William B. Grove  
Marc A. Hallbritter  
Gary F. Hess  
David G. Hofstetter*

*Kevin D. Hoyle  
Gregory Isaacs  
Ravi J. Isaiah  
Ernest S. Lyght  
Alisa Lively  
Brian A. Maxwell  
Ronald M. McCauley  
David C. Myers  
David R. Peters  
Kimberly A. Reed  
S. Doug Ritchie  
Robert O. Rupp  
Carolyn R. Shepler  
Elizabeth Short  
Mary Jean Taylor  
Robert B. Walker  
Robert W. Walker  
Mara Linaberger Watson  
Linda K. Wellings  
Linda Xander*

***President and Executive Cabinet***

*Pamela Balch, President of the College  
Larry Parsons, Vice President for Academic Affairs, Dean of the College  
Barry Pritts, Vice President for Finance  
Julia Keehner, Vice President for Student Affairs and Enrollment Management  
Tanya Shelton, Vice President for Institutional Advancement*

***Faculty Chair and Senate***

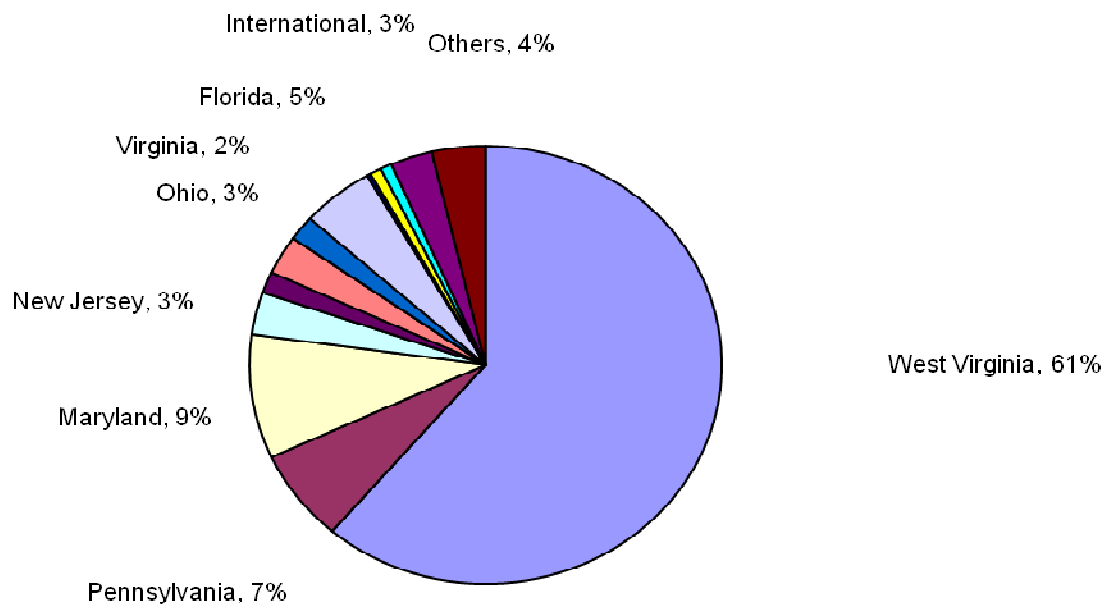
*Robert Rupp, Faculty Chair, Faculty Senate  
Chip Keating, Faculty Vice-Chair, Faculty Senate  
Pete Galarneau, Faculty Senator  
Susan Leight, Faculty Senator  
Karen Petitto, Faculty Senator  
Richard G. Weeks, Faculty Senator  
Edward Wovchko, Faculty Senator*

# *Fall 2008 New Students*

## Fall 2004-2008 Full-Time Freshmen Enrollment Funnel and Academic Profile

	Fall 2004	Fall 2005	Fall 2006	Fall 2007	Fall 2008
Applicants	1263	1096	1230	1388	1428
Accepted	981	861	1026	1067	1004
Accept rate	77.7%	78.6%	83.4%	76.9%	70.3%
Matriculates	348	307	290	401	382
Yield	35.5	35.7%	28.3%	37.6%	38.0%
High School GPA	3.35	3.34	3.29	3.32	3.35
ACT Composite Score	23	23	23	23	23
SAT Verbal Score	513	515	506	488	488
SAT Math Score	517	512	496	495	489
SAT Combined (M and V only)	1030	1027	1002	983	977

**Fall 2008  
382 Full-Time Freshmen  
by State**



## Fall 2004-2008 Freshmen Demographics

	Fall 2004	Fall 2005	Fall 2006	Fall 2007	Fall 2008
<b>Home State</b>					
West Virginia	181	169	135	240	234
Pennsylvania	46	36	40	34	26
Maryland	40	22	26	32	35
New Jersey	17	12	12	9	12
New York	6	4	8	0	6
Ohio	6	9	18	11	11
Virginia	12	19	11	16	7
Florida	16	5	11	22	19
Maine	3	2	1	1	1
Massachusetts	1	1	1	2	0
Connecticut	1	1	2	2	3
New Hampshire	2	1	2	1	3
International	4	13	8	11	11
Others	14	13	15	20	14
<b>Religious</b>					
United Methodist	77	71	64	55	61
Roman Catholic	39	47	21	44	34
Baptist	41	31	18	32	26
Christian Missionary	8	0	0	0	1
Lutheran	2	9	2	8	4
Nazarene	2	2	0	3	3
Jewish	0	1	0	0	5
Presbyterian	17	6	13	14	7
Episcopal	5	4	2	4	4
United Church of Christ	0	1	2	6	1
Other	7	13	7	11	13
No Preference	153	122	161	224	223
<b>Ethnic Classification</b>					
White American	262	251	160	216	198
African American	29	12	13	4	15
Asian American	4	5	1	2	2
American Indian/Alaska Native	2	0	2	0	1
Spanish American	2	8	5	1	4
Not specified	48	20	101	166	149
International	4	11	8	12	13
<b>Gender</b>					
Female	180	161	166	203	208
Male	168	146	124	198	174

## First-time Full-time Freshmen Financial Aid Profile

	2003-04	2004-05	2005-06	2006-07	2007-08	2008-09
WWAC Tuition and Fees	\$ 19,850	\$ 20,450	\$ 21,250	\$ 21,250	\$ 21,880	\$ 22,880

### Awarded Financial Aid to First Time Full-Time Freshmen

	Fall 2003	Fall 2004	Fall 2005	Fall 2006	Fall 2007	Fall 2008
Number First-time Full-time Freshmen	457	348	308	290	401	382
% Completing FAFSA	90%	90%	87%	89%	91%	92%
% applied for Need or Merit Financial Aid	99%	98%	98%	99%	98%	99%
% received any Financial Aid	99%	99%	97%	99%	98%	99%
% received scholarship or grant aid	98%	99%	96%	98%	98%	99%
% received self help aid	96%	98%	97%	96%	74%	76%

Average Financial Aid Award All Sources	\$ 19,315	\$ 19,836	\$ 19,479	\$ 19,490	\$ 23,471	\$ 25,479
Average Scholarship and Grant Award All Sources	\$ 14,420	\$ 15,963	\$ 15,309	\$ 16,111	\$ 18,464	\$ 19,768
Average Self Help Award All Sources	\$ 4,895	\$ 3,873	\$ 4,170	\$ 3,379	\$ 3,465	\$ 6,394

% received Alternative Loans	4%	4%	4%	6%	4%	2%
% received Parent Plus Loans	17%	21%	21%	17%	11%	6%
Median Estimated Family Contribution	\$ 8,255	\$ 9,612	\$ 11,547	\$ 12,211	\$ 8,302	\$ 10,074
% Pell Eligible	33%	30%	25%	25%	30%	31%

Source: Financial Aid Files as of no later than November 15th each year.

\*Aid Averages do include Parent and Alternative Loan Amounts

# ***Fall 2008 Student Body***

## West Virginia Wesleyan College Historical Enrollment Summary

### UNDERGRADUATE STUDENT ENROLLMENT

NEW FULL TIME STUDENTS	2004-2005		2005-2006		2006-2007		2007-2008		2008-2009	
	Fall	Spring	Fall	Spring	Fall	Spring	Fall	Spring	Fall	Spring
Fall First Year	347	320	307	277	291	265	401	347	382	342
Spring First Year		0		4		4		6		11
Fall Transfers	34	30	24	19	39	35	55	45	42	36
Spring Transfers		10		13		19		7		9
Fall Visitors	6	6	6	5	5	4	5	5	5	5
Spring Visitors		0		0		0		0		0
<b>Total</b>	<b>387</b>	<b>366</b>	<b>337</b>	<b>318</b>	<b>335</b>	<b>327</b>	<b>461</b>	<b>410</b>	<b>429</b>	<b>403</b>
<b>RETURNING FULL TIME STUDENTS</b>										
Continuing Students	1059	965	945	874	796	737	725	676	789	737
Fall readmits	10		15		9		16		15	
Spring Readmits		7		6		10		10		12
<b>Total</b>	<b>1069</b>	<b>972</b>	<b>960</b>	<b>880</b>	<b>805</b>	<b>747</b>	<b>741</b>	<b>686</b>	<b>804</b>	<b>749</b>
<b>TRADITIONAL UNDERGRADUATES</b>										
Full-time Enrollment	1456	1338	1297	1198	1140	1074	1202	1096	1233	1152
Part-time Enrollment	27	39	28	23	37	33	32	33	42	41
<b>Total Headcount</b>	<b>1483</b>	<b>1377</b>	<b>1325</b>	<b>1221</b>	<b>1177</b>	<b>1107</b>	<b>1234</b>	<b>1129</b>	<b>1275</b>	<b>1193</b>
FTE	1468	1351	1308	1208	1154	1089	1217	1110	1252	1169
Traditional Undergraduate Average FTE	1410		1258		1122		1163		1210	
<b>ADDITIONAL UNDERGRADUATE PROGRAM</b>										
<b>Distance Learning**</b>										
Full-time	0	0	0		0	0	0	0	0	0
Part-time	3	1	0		1	0	0	0	0	0
<b>Total Headcount</b>	<b>3</b>	<b>1</b>	<b>0</b>		<b>1</b>	<b>0</b>	<b>0</b>	<b>0</b>	<b>0</b>	<b>0</b>
<b>TOTAL UNDERGRADUATE</b>										
Full-time	1456	1338	1297	1198	1140	1074	1202	1096	1233	1152
Part-time	30	40	28	28	38	35	32	33	42	41
<b>Total Headcount</b>	<b>1486</b>	<b>1378</b>	<b>1325</b>	<b>1221</b>	<b>1178</b>	<b>1107</b>	<b>1234</b>	<b>1129</b>	<b>1275</b>	<b>1193</b>
Undergraduate FTE	1470	1351	1308	1208	1154	1089	1217	1110	1252	1169
Average Undergraduate FTE	1411		1258		1122		1163		1210	

<b>GRADUATE STUDENT ENROLLMENT</b>										
	2004-2005		2005-2006		2006-2007		2007-2008		2008-2009	
	Fall	Spring	Fall	Spring	Fall	Spring	Fall	Spring	Fall	Spring
<b>MASTERS OF BUSINESS ADMINISTRATION***</b>										
Full-time	29	32	35	36	35	34	25	28	23	23
Part-time	7	4	6	13	11	9	5	6	4	5
Total Headcount	36	36	41	49	46	43	30	34	27	28
FTE	34	34	44	43	41	39	28	31	25	31
<i>Five Year MBA Program (not included in above MBA figures)#</i>	18	22	24	30	20	28	16	19	19	27
<b>MASTERS OF EDUCATION****</b>										
Full-time							5	9	10	7
Part-time							7	4	3	7
Total Headcount							12	13	13	14
FTE							9	11	12	11
<i>Five YEAR MED (not included in above MED figures)#</i>							1	5	6	8
<b>MASTERS OF ATHLETIC TRAINING##</b>										
Full-time									3	3
Part-time									0	0
Total Headcount									3	3
FTE									3	3
<b>TOTAL MASTERS LEVEL GRADUATE STUDENTS</b>										
Full-time Enrollment	29	32	35	36	35	34	30	37	36	33
Part-time Enrollment	7	4	6	13	11	9	12	10	7	12
Total Headcount	36	36	41	49	46	43	42	47	43	45
FTE	34	34	44	43	41	39	37	42	40	39
<b>TOTAL STUDENT BODY ENROLLMENT SUMMARY</b>										
Total Student Body Full-time Enrollment	1485	1370	1332	1234	1175	1108	1232	1133	1269	1185
Total Student Body Part-time Enrollment	37	44	34	41	49	44	44	43	49	53
Total Student Body Headcount Enrollment	1522	1414	1366	1270	1224	1150	1276	1176	1318	1235
Total Student Body Semester FTE	1503	1385	1352	1250	1194	1128	1253	1152	1292	1210
Total Student Body Average FTE	1444		1301		1161		1203		1251	

**\*\*Distance Education** is an academic extension of West Virginia Wesleyan College, offering college-level courses designed for home study by students not enrolled in a campus based post-secondary program of study. In the Fall 1996 a rolling enrollment style registration was implemented in which a student could register for courses anytime during the year. The number listed here is as of the official date of enrollment for Fall.

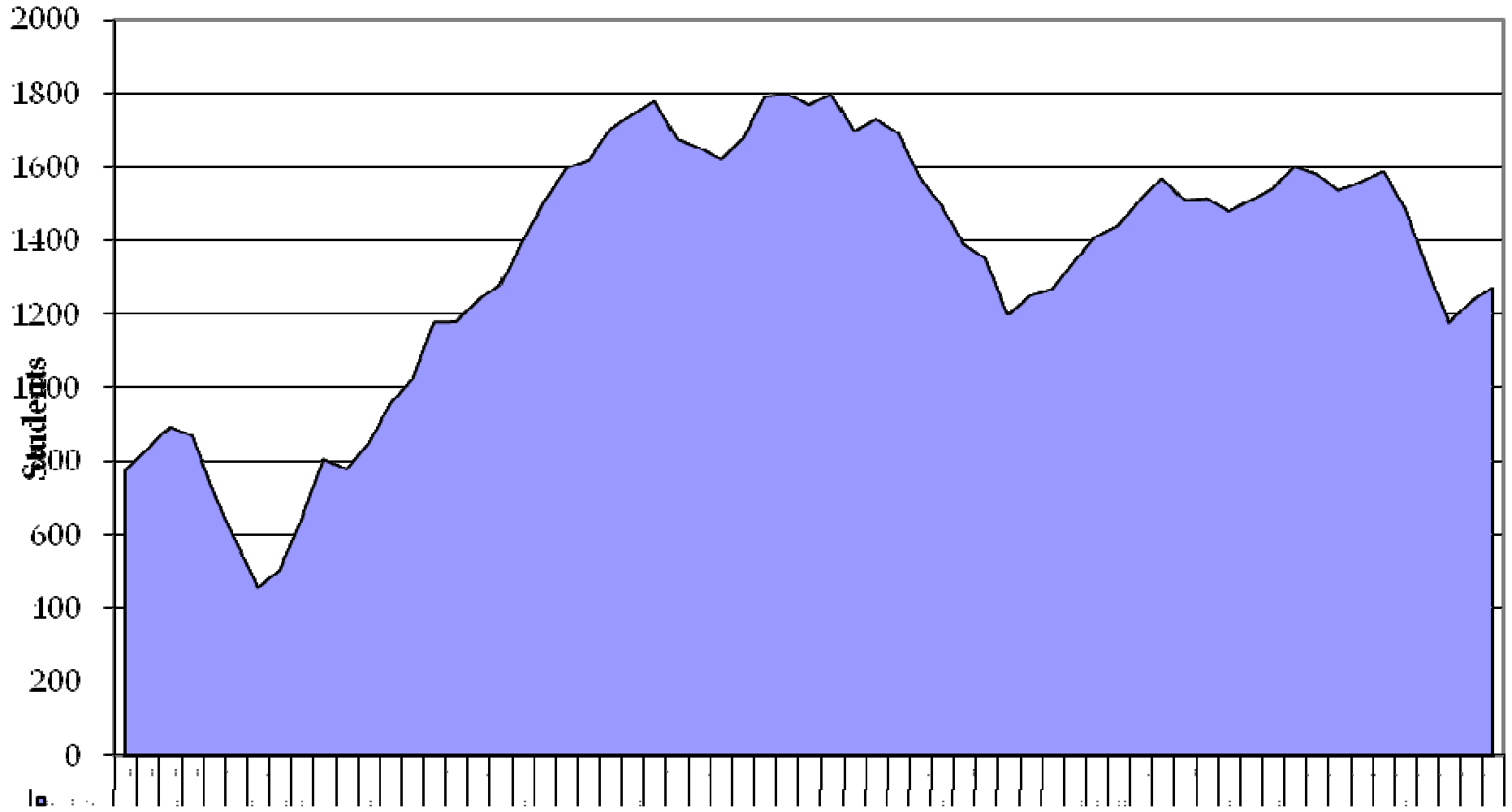
**\*\*\* The MBA Program** redefined full-time status from 9 credit hours to 6 credit hours per semester for Fall 1999. This change will inflate the number of full-time and FTE student compared to previous years. The figure that should be used to compare to prior years is the Head Count Enrollment. The 5 year MBA program students are officially counted in the undergraduate headcount and FTE numbers but are also enrolled in one or more masters level courses.

**# Fall 2001** was the first year for tracking of 5 Year MBA Students. These students will be officially counted in the Undergraduate Headcount and FTE numbers but are also enrolled in one or more masters level courses.

**\*\*\*\* The MED PROGRAM** was reestablished in Fall 2007. The 5 year MED program students are officially counted in the undergraduate headcount and FTE numbers but are also enrolled in one or more masters level courses.

**## The MAT Program** had its first enrollment in Fall 2008.

# West Virginia Wesleyan College Undergraduate Student Headcount Fall 1946 to Fall 2008



## FALL 2008 ALL STUDENTS ETHNIC AND GENDER BREAKDOWN

### Undergraduates

		Nonresident alien	Black non-Hispanic	Am. Indian or Alaskan Native	Asian or Pacific Islander	Hispanic	White, non-Hispanic	Biracial	Race/eth. unknown	Total	Gender Percentage
Full Time Undergraduates	Men	30	24	2	2	5	293	0	197	553	44.8%
	Women	33	15	0	3	8	451	0	170	680	55.2%
Full-time	Ethnic										
	Percentages	5.1%	3.2%	0.2%	0.4%	1.1%	60.3%	0.0%	29.8%		
Part Time Undergraduates											
Part Time Undergraduates	Men	2	1	0	0	0	8	0	4	15	36.6%
	Women	0	0	0	1	0	21	0	4	26	63.4%
Total Undergraduates											
Total Undergraduates	Men	32	25	2	2	5	301	0	201	568	44.6%
	Women	33	15	0	4	8	472	0	174	706	55.4%
Undergrad	Ethnic	65	40	2	6	13	773	0	375	1274	
	Percentages	5.1%	3.1%	0.2%	0.5%	1.0%	60.7%	0.0%	29.4%		

### Graduate Students

Full Time Graduate Students											
Full Time Graduate Students	Men	1	3	0	0	1	12	0	2	19	52.8%
	Women	0	0	0	0	0	15	0	2	17	47.2%
Part-time Graduate Students											
Part-time Graduate Students	Men	0	0	0	0	0	1	0	1	2	28.6%
	Women	0	0	0	0	0	3	0	2	5	71.4%
Total Graduate Students											
Total Graduate Students	Men	1	3	0	0	1	13	0	3	21	52.5%
	Women	0	0	0	0	0	15	0	4	19	47.5%
Graduate Students	Ethnic										
	Percentages	2.5%	7.5%	0.0%	0.0%	2.5%	70.0%	0.0%	17.5%		

### Grand Total Students

Total Students	Men	33	28	2	2	6	314	0	204	589	44.8%
	Women	33	15	0	4	8	487	0	178	725	55.2%
Total Students	Ethnic										
	Percentages	5.0%	3.3%	0.2%	0.5%	1.1%	61.0%	0.0%	29.1%	1314	

## STATES AND COUNTRIES

West Virginia Wesleyan College has a commitment to providing a diverse environment for student to both learn in and live in. Fifty-nine percent of Wesleyan's student body are from WV. Thirty-six percent of the student body consists of students from 40 other states and five percent are international students from the 16 different countries.

# Ten Year Full-time Undergraduate Ethnic and Gender and Basic Geographic Breakdown Summary

## Fall Full-time Undergraduates Ethnic Summary

	1999	2000	2001	2002	2003	2004	2005	2006	2007	2008
% of Full-time Undergraduates										
Minority*	7.7%	7.3%	8.0%	7.3%	7.1%	7.9%	7.6%	7.2%	5.0%	4.8%
International**	4.3%	4.0%	3.8%	3.1%	3.0%	3.0%	3.2%	3.6%	3.3%	3.2%
White/Non-Hispanic	87.4%	88.7%	87.9%	89.5%	81.5%	79.5%	79.5%	72.5%	62.9%	60.3%
Unknown	0.6%	0.0%	0.3%	0.0%	8.4%	9.6%	9.7%	16.8%	27.7%	29.8%

\* Minority students include: Black Non-Hispanic, Am. Indian or Alaskan, Asian or Pacific Islander and Hispanic

\*\* International students include: students with the ethnic code of Nonresident Alien

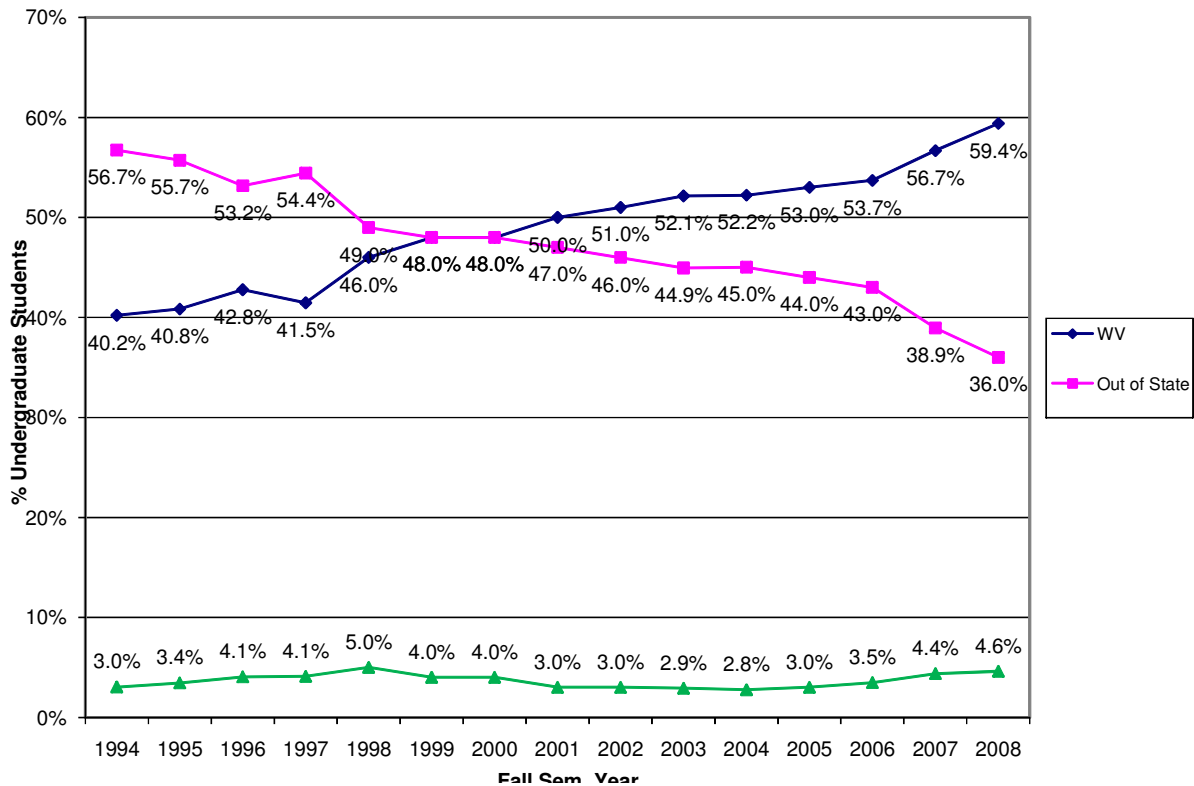
## Fall Full-time Undergraduates Gender Summary

	1999	2000	2001	2002	2003	2004	2005	2006	2007	2008
% of Full-time Undergraduates										
Male	44.1%	43.9%	46.3%	45.3%	44.8%	46.8%	44.6%	45.8%	46.2%	44.8%
Female	55.9%	56.1%	53.7%	54.7%	55.2%	53.2%	55.4%	54.2%	53.8%	55.2%

## Fall Undergraduates Geographic Summary

	1999	2000	2001	2002	2003	2004	2005	2006	2007	2008
WV	48%	48%	50%	51%	52%	52%	53%	54%	57%	59%
Out of State	48%	48%	47%	46%	45%	45%	44%	43%	39%	36%
International	4%	4%	3%	3%	3%	3%	3%	3%	4%	5%
Undergrad Head Count	1,571	1,539	1,507	1,558	1,582	1,486	1,297	1,177	1,235	1,275

## Fall Undergraduate Headcount Geographic Summary Fifteen Year History



## Full-time and Part-time Undergraduates

## Declared Academic First and Second Majors October 2008

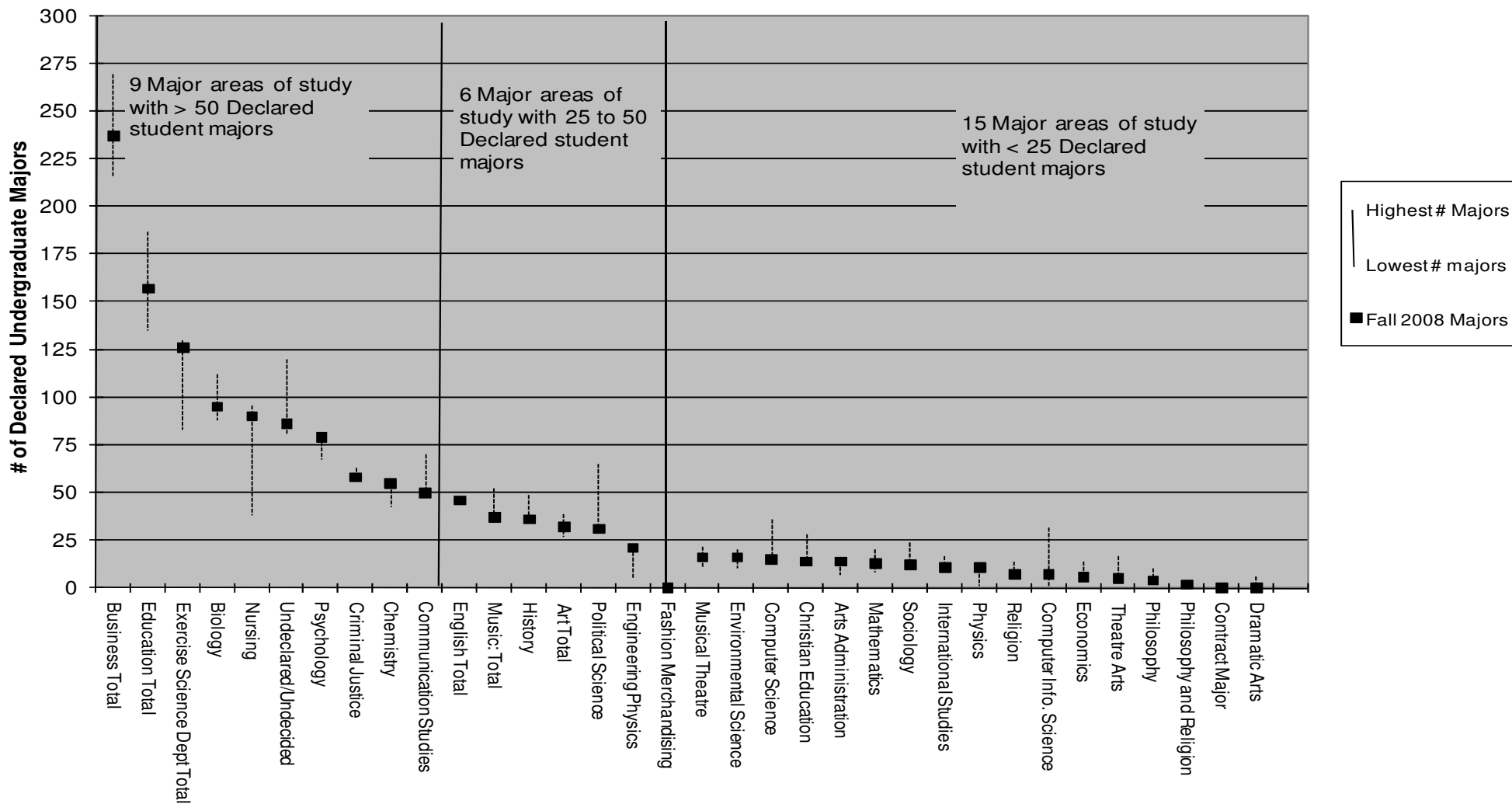
Major	Track	2008				Most Recent 5 Year			
		Majors	2nd Majors	Total Majors	% of Total	Majors	2nd Mbdors	Total Majors	% of Total
<b>Art Total</b>		<b>30</b>	<b>2</b>	<b>32</b>	<b>2.3%</b>	<b>152</b>	<b>6</b>	<b>158</b>	<b>2.1%</b>
	Education	0		0	0.0%	0	0	0	0.0%
	Graphic Design	25		25	1.8%	75	0	75	1.0%
	Painting/Drawing	3	2	5	0.4%	7	2	9	0.1%
	Studio			0	0.0%	8	0	8	0.1%
	Intermedia	2		2	0.1%	5	1	6	0.1%
<b>Arts Administration</b>		<b>12</b>	<b>2</b>	<b>14</b>	<b>1.0%</b>	<b>46</b>	<b>6</b>	<b>52</b>	<b>0.7%</b>
	AAArt	5		5					
	AAMusic	3	1	4					
	AATheatre	4	1	5					
<b>Biology</b>		<b>90</b>	<b>5</b>	<b>95</b>	<b>6.8%</b>	<b>492</b>	<b>10</b>	<b>502</b>	<b>6.7%</b>
<b>Business Total</b>		<b>231</b>	<b>6</b>	<b>237</b>	<b>17.0%</b>	<b>1148</b>	<b>47</b>	<b>1195</b>	<b>16.1%</b>
	Accounting	63		63	4.5%	251	2	253	3.4%
	Finance	1		1	0.1%	23	0	23	0.3%
	Business Admin	92	2	94	6.8%	448	21	469	6.3%
	Management	26	3	29	2.1%	177	12	189	2.5%
	Marketing	30		30	2.2%	186	6	192	2.6%
	International Business	19	1	20	1.4%	63	6	69	0.9%
<b>Chemistry</b>		<b>45</b>	<b>10</b>	<b>55</b>	<b>4.0%</b>	<b>211</b>	<b>48</b>	<b>259</b>	<b>3.5%</b>
<b>Christian Education</b>		<b>8</b>	<b>6</b>	<b>14</b>	<b>1.0%</b>	<b>78</b>	<b>21</b>	<b>99</b>	<b>1.3%</b>
<b>Communication Studies</b>		<b>47</b>	<b>3</b>	<b>50</b>	<b>3.6%</b>	<b>275</b>	<b>31</b>	<b>306</b>	<b>4.1%</b>
	Communication	29	2	31	2.2%	147	20	167	2.2%
	Public Relations	17	1	18	1.3%	128	11	139	1.9%
	Media Studies	1		1	0.1%	1		1	0.0%
<b>Computer Info. Science</b>		<b>6</b>	<b>1</b>	<b>7</b>	<b>0.5%</b>	<b>43</b>	<b>3</b>	<b>46</b>	<b>0.6%</b>
<b>Computer Science</b>		<b>15</b>		<b>15</b>	<b>1.1%</b>	<b>116</b>	<b>2</b>	<b>118</b>	<b>1.6%</b>
<b>Contract Major</b>		<b>3</b>		<b>3</b>	<b>0.2%</b>	<b>3</b>	<b>0</b>	<b>3</b>	<b>0.0%</b>
<b>Criminal Justice</b>		<b>53</b>	<b>5</b>	<b>58</b>	<b>4.2%</b>	<b>254</b>	<b>36</b>	<b>295</b>	<b>4.0%</b>
<b>Dramatic Arts</b>				<b>0</b>	<b>0.0%</b>	<b>1</b>	<b>0</b>	<b>1</b>	<b>0.0%</b>
<b>Economics</b>		<b>4</b>	<b>2</b>	<b>6</b>	<b>0.4%</b>	<b>27</b>	<b>25</b>	<b>52</b>	<b>0.7%</b>
<b>Education Total</b>		<b>150</b>	<b>7</b>	<b>157</b>	<b>11.3%</b>	<b>773</b>	<b>32</b>	<b>805</b>	<b>10.8%</b>
	Elementary	93	3	96	6.9%	455	7	462	6.2%
	Secondary	57	4	61	4.4%	318	25	343	4.6%
<b>Engineering Physics</b>		<b>20</b>	<b>1</b>	<b>21</b>	<b>1.5%</b>	<b>72</b>	<b>1</b>	<b>73</b>	<b>1.0%</b>
<b>English Total</b>		<b>38</b>	<b>8</b>	<b>46</b>	<b>3.3%</b>	<b>171</b>	<b>57</b>	<b>228</b>	<b>1.7%</b>
	English	11	8	19	1.4%	28	22	50	0.7%
	Education	0		0	0.0%	0	0	0	0.0%
	Literature	12		12	0.9%	25	0	25	0.3%
	Writing	15		15	1.1%	48	0	48	0.6%
<b>Environmental Science</b>		<b>15</b>	<b>1</b>	<b>16</b>	<b>1.1%</b>	<b>75</b>	<b>1</b>	<b>76</b>	<b>1.0%</b>
<b>Exercise Science (Health and Physical Education) Total</b>		<b>117</b>	<b>9</b>	<b>126</b>	<b>9.1%</b>	<b>489</b>	<b>23</b>	<b>512</b>	<b>6.9%</b>
	Physical Education	1	7	8	0.6%	56	16	72	1.0%
	Exercise Science (Health Promo./Fitness)	61	2	63	4.5%	189	3	192	2.6%
	Athletic Training	55		55	4.0%	244	4	248	3.3%
<b>History</b>		<b>24</b>	<b>12</b>	<b>36</b>	<b>2.6%</b>	<b>153</b>	<b>52</b>	<b>205</b>	<b>2.8%</b>
<b>International Studies</b>		<b>9</b>	<b>2</b>	<b>11</b>	<b>0.8%</b>	<b>56</b>	<b>17</b>	<b>73</b>	<b>1.0%</b>
<b>Mathematics</b>		<b>5</b>	<b>8</b>	<b>13</b>	<b>0.9%</b>	<b>37</b>	<b>28</b>	<b>65</b>	<b>0.9%</b>
<b>Music: Total</b>		<b>34</b>	<b>3</b>	<b>37</b>	<b>2.7%</b>	<b>194</b>	<b>16</b>	<b>210</b>	<b>2.8%</b>
	Music	9	3	12	0.9%	66	15	81	1.1%
	Education	25		25	1.8%	128	1	129	1.7%
<b>Musical Theatre</b>		<b>15</b>	<b>1</b>	<b>16</b>	<b>1.1%</b>	<b>75</b>	<b>7</b>	<b>82</b>	<b>1.1%</b>
<b>Nursing</b>		<b>90</b>		<b>90</b>	<b>6.5%</b>	<b>356</b>	<b>0</b>	<b>356</b>	<b>4.8%</b>
<b>Philosophy</b>		<b>2</b>	<b>2</b>	<b>4</b>	<b>0.3%</b>	<b>15</b>	<b>19</b>	<b>34</b>	<b>0.5%</b>
<b>Philosophy and Religion</b>		<b>2</b>		<b>2</b>	<b>0.1%</b>	<b>9</b>	<b>0</b>	<b>9</b>	<b>0.1%</b>
<b>Physics</b>		<b>10</b>	<b>1</b>	<b>11</b>	<b>0.8%</b>	<b>29</b>	<b>3</b>	<b>32</b>	<b>0.4%</b>
<b>Political Science</b>		<b>23</b>	<b>8</b>	<b>31</b>	<b>2.2%</b>	<b>189</b>	<b>52</b>	<b>241</b>	<b>3.2%</b>
<b>Psychology</b>		<b>70</b>	<b>9</b>	<b>79</b>	<b>5.7%</b>	<b>343</b>	<b>32</b>	<b>375</b>	<b>5.0%</b>
<b>Religion</b>		<b>6</b>	<b>1</b>	<b>7</b>	<b>0.5%</b>	<b>36</b>	<b>16</b>	<b>52</b>	<b>0.7%</b>
<b>Sociology</b>		<b>10</b>	<b>2</b>	<b>12</b>	<b>0.9%</b>	<b>47</b>	<b>47</b>	<b>94</b>	<b>1.3%</b>
<b>Theatre Arts</b>		<b>5</b>		<b>5</b>	<b>0.4%</b>	<b>59</b>	<b>6</b>	<b>65</b>	<b>0.9%</b>
<b>Undeclared/Undecided</b>		<b>86</b>		<b>86</b>	<b>6.2%</b>	<b>464</b>	<b>0</b>	<b>464</b>	<b>6.2%</b>
<b>Total Undergraduate Students</b>		<b>1,275</b>	<b>117</b>	<b>1392</b>	<b>100%</b>	<b>6763</b>	<b>675</b>	<b>7443</b>	<b>100.0%</b>

% with more than one major

9.2%

10.0%

### Fall 2008 Declared Undergraduate Majors and 2004 - 2008 Range for Number of Majors



**West Virginia Wesleyan College**  
**Student Organizations**  
(In Alphabetical Order)

4-H Club	Delta Mu Delta	Phi Sigma Tau
Alpha Delta Pi	Engineering/Physics Club	Pre-Law
Alpha Gamma Delta	Freshman Council	Psi Chi
Alpha Lambda Delta	Gamma Sigma Alpha	Residence Hall Council
Alpha Phi Alpha	Green Club	SADD
Alpha Phi Omega	Hallom Math Honorary	Senior Class
Alpha Psi Omega	Honors Student Organization	SIFE
Alpha Sigma Phi	Interfraternity Council	Sigma Alpha Iota
	International Student	
Alpha Xi Delta	Organization	Sigma Tau Delta
Awards and Elections	Intervarsity Christian Fellowship	Sigma Theta Epsilon
Beta Beta Beta	Jazz Ensemble	Sigma Theta Tau
Black Business Student		
Assn	Junior Class	SNOW
Black Student Union	Kappa Delta Pi	Sociology Club
Bonner Scholars	Kappa Phi	Sophomore Class
Campus Activities Board	Lambda Pi Eta	Special Activities Committee
Campus Crusade	Loveshine	Standard Deviators
Catholic Campus Ministry	Mortar Board	Student Art League
Chapel Choir	Murmurmontis	Student Athletic Trainers' Club
Cheerleading	Nurses Chrstian Fellowship	Student Education Association
Chi Phi	Omega Psi Phi Fraternity	Theta Chi
Chrisitan Life Council	Omicron Delta Epsilon	Theta Xi
		United Methodist Student
Circle K	Omicron Delta Kappa	Movement
College Republicans	Order of Omega	Wesleyan Ambassadors
Community Council	Panhellenic Association	Wesleyan Singers
Computer Club	Peace with Judice Com	Wesleyan's Lacrosse
Concentus Vocum	Pharos	WVWC-FM 92
Concert Band	Phi Kappa Phi	Young Democrats
Concert Chorale	Phi Mu Alpha Sinfonia	Zeta Tau Alpha

**West Virginia Wesleyan College  
All Student Athletes  
by Scholarship Status**

Sports	All Student Fall 2008				All Student Fall 2007				All Student Fall 2006			
	Number of Student Athletes	Scholarship Student Athletes	Walk on Student Athletes	% Scholarship	Number of Student Athletes	Scholarship Student Athletes	Walk on Student Athletes	% Scholarship	Number of Student Athletes	Scholarship Student Athletes	Walk on Student Athletes	% Scholarship
Baseball	48	28	20	58%	53	29	24	55%	27	15	12	56%
M. Basketball	20	8	12	40%	26	15	11	58%	14	12	2	86%
M. Cross Country and Track*	35	26	9	74%	38	22	16	58%	44	18	26	41%
Football	96	59	37	61%	107	66	41	62%	78	56	22	72%
Golf	13	7	5	54%	14	4	10	29%	16	5	11	31%
M. Soccer	31	20	11	65%	39	22	17	56%	28	18	10	64%
M. Swimming	9	8	1	89%	12	10	2	83%	10	9	1	90%
M. Tennis	17	12	5	71%	16	5	11	31%	10	3	7	30%
<b>Totals</b>	<b>269</b>	<b>168</b>	<b>100</b>	<b>62%</b>	<b>305</b>	<b>173</b>	<b>132</b>	<b>57%</b>	<b>227</b>	<b>136</b>	<b>91</b>	<b>60%</b>
% of FT Undergraduate Men	48.3%	30.2%	18.0%		55.0%	31.2%	23.8%		43.6%	26.1%	17.5%	
# of FT Undergraduate Men	557				555				521			
<b>Women's Programs</b>												
W. Basketball	18	15	3	83%	21	16	5	76%	12	12	0	100%
W. Cross Country and Track*	47	37	10	79%	37	25	12	68%	38	23	15	61%
W. Soccer	32	22	10	69%	27	20	7	74%	24	14	10	58%
Softball	25	16	9	64%	30	19	11	63%	20	12	8	60%
W. Swimming	14	12	2	86%	6	5	1	83%	9	6	3	67%
W. Tennis	11	11	0	100%	11	6	5	55%	11	6	5	55%
Volleyball	15	15	0	100%	19	11	8	58%	10	9	1	90%
W. Golf	9	6	3	67%	8	4	4	50%	8	0	8	0%
<b>Totals</b>	<b>171</b>	<b>134</b>	<b>37</b>	<b>78%</b>	<b>159</b>	<b>106</b>	<b>53</b>	<b>67%</b>	<b>132</b>	<b>82</b>	<b>50</b>	<b>62%</b>
% FT Undergraduate Women	25.3%	19.8%	5.5%		24.6%	16.4%	8.2%		21.3%	13.2%	8.1%	
# of FT Undergraduate Women	676				647				619			
<b>All Student Athlete Totals</b>	<b>440</b>	<b>302</b>	<b>137</b>	<b>69%</b>	<b>464</b>	<b>279</b>	<b>185</b>	<b>60%</b>	<b>359</b>	<b>218</b>	<b>141</b>	<b>61%</b>
% of Total Students	36.6%	25.1%	11.4%		38.6%	23.2%	15.4%		31.5%	19.1%	1.3%	
# Total FT Students	1233				1202				1140			

\* This number does not include those athlete who also participated in another sport during the year.

Compiled by the Office of Institutional Research

Source: WVWC Squad Lists as provided by the Financial Aid Office.

**West Virginia Wesleyan College**  
**Fall to Fall**  
**Institutional Yearly Retention Rate**  
**First-Time Full-time Freshmen**

Fall to Fall Year of Retention*	Fall 98 to Fall 99	Fall 99 to Fall 00	Fall 00 to Fall 01	Fall 01 to Fall 02	Fall 02 to Fall 03	Fall 03 to Fall 04	Fall 04 to Fall 05	Fall 05 to Fall 06	Fall 06 to Fall 07	<i>Most Recent 3 yr Average</i>	Fall 07 to Fall 08 <b>Actual</b>
<b>Freshmen to Sophomore (Year 1)</b>	78.0%	73.5%	73.7%	75.8%	80.8%	72.4%	75.0%	70.0%	75.3%	73.3%	73.8%
<b>Sophomore to Junior (Year 2)</b>	81.5%	80.8%	83.2%	86.0%	81.8%	82.4%	83.0%	83.1%	88.3%	84.7%	83.03%
<b>Junior to Senior (Year 3)</b>	91.3%	92.7%	91.3%	95.5%	92.4%	95.6%	92.5%	92.7%	95.4%	90.9%	91.6%
<b>Yearly Retention Rate**</b>	58.0%	55.0%	56.0%	62.2%	61.1%	57.1%	57.6%	54.0%	63.4%	56.4%	<b>56.1%</b>

\* These numbers only reflect retention for students who originally entered WVWC as First-time Full-time Freshmen

\*\*Yearly Retention Rates = 100% X First Year Retention X Second Year Retention X Third Year Retention reflects an overall retention rate for that Academic Year

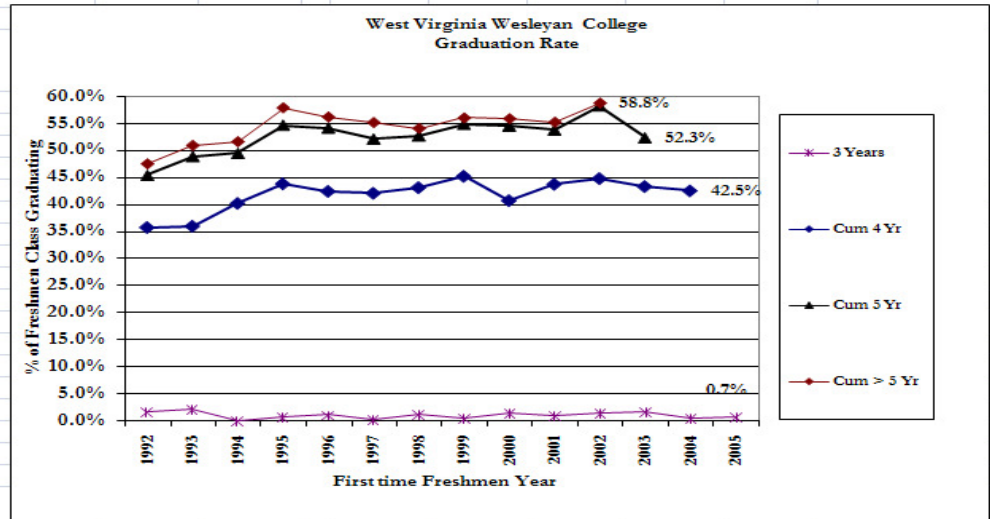
# Updated projection is based on preregistered students as of 8-03-2007 and historical patterns of registration completion after that date

Actual Data is as of the census date each year.

## West Virginia Wesleyan College First-time Full-time Freshmen Retention and Graduation Rates 1988 to Present

First-Time Full-time Freshmen and Year Entering College		Returning for:								Graduating in:				Total	Total Grads %
		Year 2	%	Year 3	%	Year 4	%	Year 5	Year 6	3 yrs or less	4 yrs	5 yrs	> 5		
1992	467	325	69.6%	252	54.0%	227	48.6%	51	8	8	159	45	10	222	47.5%
1993	475	332	69.9%	277	58.3%	244	51.4%	58	8	10	161	61	10	242	50.9%
1994	455	324	71.2%	263	57.8%	240	52.7%	48	5	0	183	42	10	235	51.6%
1995	454	352	77.5%	289	63.7%	268	59.0%	59	4	3	196	49	15	263	57.9%
1996	377	272	72.1%	229	60.7%	209	55.4%	35	3	4	156	44	8	212	56.2%
1997	480	368	76.7%	300	62.5%	277	57.7%	54	8	1	201	48	15	265	55.2%
1998	473	369	78.0%	300	63.4%	267	56.4%	50	9	6	198	45	7	256	54.1%
1999	471	348	73.9%	288	61.1%	276	58.6%	47	3	2	211	45	6	264	56.1%
2000	415	306	73.7%	264	63.6%	244	58.8%	63	3	6	163	57	6	232	55.9%
2001	400	303	75.8%	248	62.0%	235	58.8%	36	6	4	171	40	6	221	55.3%
2002	500	404	80.8%	333	66.6%	294	58.8%	63	4	7	217	67	3	294	58.8%
2003	457	331	72.4%	272	59.5%	245	53.6%	39	2	7	191	41			
2004	348	261	75.0%	214	61.5%	207	59.5%	50		2	146				
2005	307	215	70.0%	190	61.9%	169				2					
2006	291	219	75.3%	181	62.2%										
2007	401	296	73.8%												
2008	382														
Recent 5 Yr Average	389	264	73.3%	238	62.5%	230	57.2%	50	4	4	178	50	6	253	56.1%

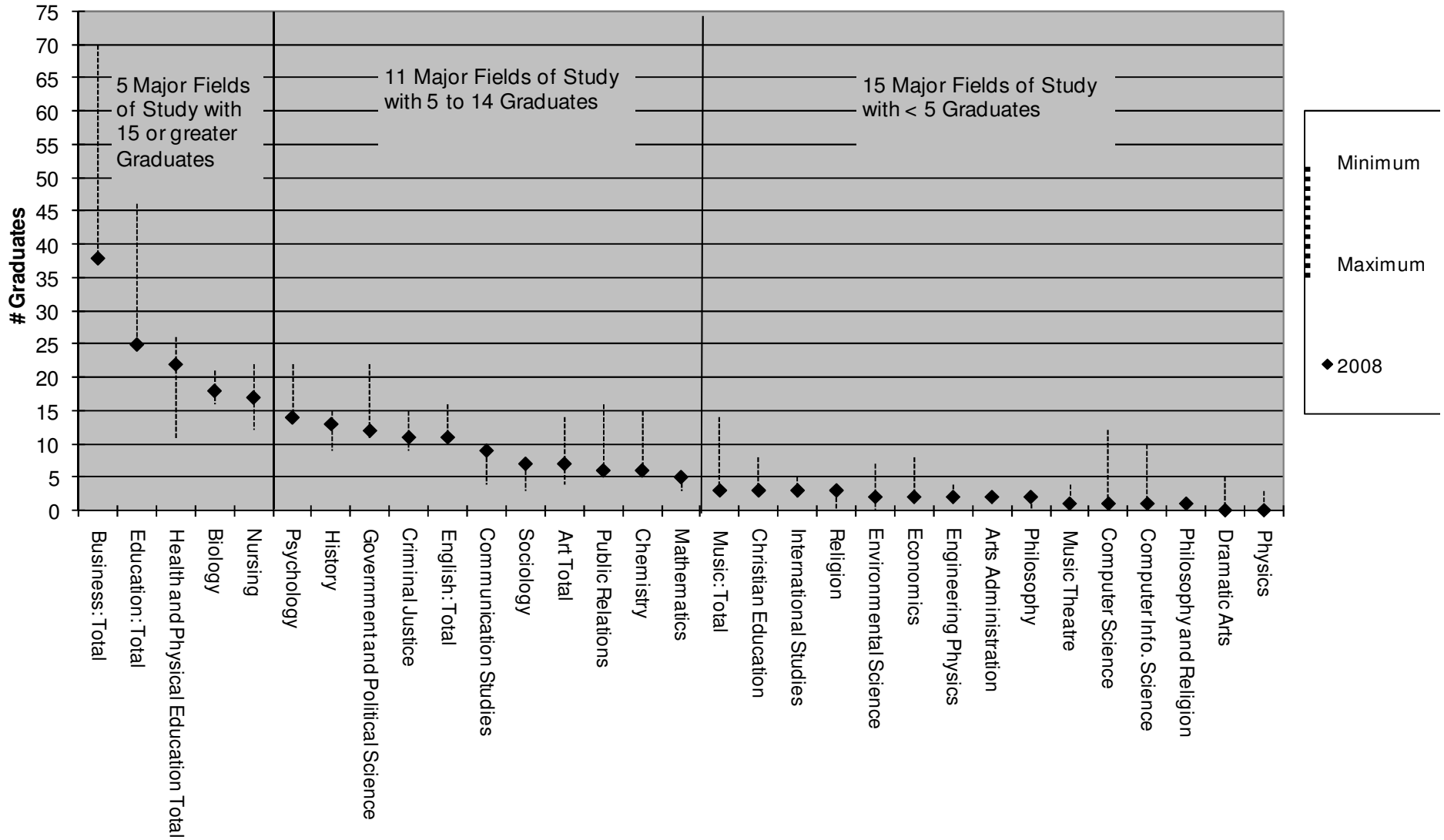
First Time Freshmen Year	Graduation Rates					
	3 Years	Cum 4 Yr	5 years	Cum 5 Yr	> 5	Cum > 5 Yr
1988	0.0%	40.6%	14.0%	54.6%	3.1%	57.7%
1989	1.0%	36.5%	14.4%	50.9%	2.9%	53.8%
1990	0.0%	39.2%	10.0%	49.1%	3.4%	52.6%
1991	1.7%	42.7%	12.1%	54.8%	2.5%	57.3%
1992	1.7%	35.8%	9.6%	45.4%	2.1%	47.5%
1993	2.1%	36.0%	12.8%	48.8%	2.1%	50.9%
1994	0.0%	40.2%	9.2%	49.5%	2.2%	51.6%
1995	0.7%	43.8%	10.8%	54.6%	3.3%	57.9%
1996	1.1%	42.4%	11.7%	54.1%	2.1%	56.2%
1997	0.2%	42.1%	10.0%	52.1%	3.1%	55.2%
1998	1.3%	43.1%	9.5%	52.6%	1.5%	54.1%
1999	0.4%	45.2%	9.6%	54.8%	1.3%	56.1%
2000	1.4%	40.7%	13.7%	54.5%	1.4%	55.9%
2001	1.0%	43.8%	10.0%	53.8%	1.5%	55.3%
2002	1.4%	44.8%	13.4%	58.2%	0.6%	58.8%
2003	1.5%	43.3%	9.0%	52.3%		
2004	0.6%	42.5%				
2005	0.7%					
Recent 5 Yr Average	1.1%	43.1%	11.1%	54.8%	1.2%	56.1%



## Degrees Awarded By Major Field of Study 2007-2008

		2008				Prev. 5 year Total			
		July 1, 2007 through June 30, 2008				July 1, 2003 through June 30, 2007			
Major	Division	Majors	Second or third Majors	Total Majors	%of All	Majors	Second or third Majors	Total Majors	%of All
<b>Art Total</b>		7	0	7	2.8%	58	0	58	3.4%
	Graphic Design	6		6	2.4%	38	0	38	
	Painting/Drawing	1		1	0.4%	15	0	15	
	Ceramics	0		0	0.0%	3	0	3	
	Intermedia	0		0	0.0%	2	0	2	
<b>Art Administration</b>		2		2	0.8%	7	2	9	0.5%
<b>Biology</b>		17	1	18	7.3%	95	0	95	5.6%
<b>Business: Total</b>		37	1	38	15.4%	307	8	315	18.4%
	Accounting	5		5	2.0%	62	0	62	
	Finance			0	0.0%	11	2	13	
	Business Administration	11		11	4.5%	73	1	74	
	International Business	1	1	2	0.8%	14	1	15	
	Management	12		12	4.9%	63	3	66	
	Marketing	8		8	3.2%	84	1	85	
<b>Chemistry</b>		6		6	2.4%	41	25	66	3.9%
<b>Christian Education</b>		3		3	1.2%	27	1	28	1.6%
<b>Communication Studies</b>		7	2	9	3.6%	33	0	33	1.9%
<b>Computer Info. Science</b>		1		1	0.4%	40	0	40	2.3%
<b>Computer Science</b>		1		1	0.4%	35	0	35	2.0%
<b>Contract Major</b>				0	0.0%	4	0	4	0.2%
<b>Criminal Justice</b>		10	1	11	4.5%	31	8	39	2.3%
<b>Dramatic/Theatre Arts</b>				0	0.0%	14	0	14	0.8%
<b>Economics</b>		2		2	0.8%	10	25	35	2.0%
<b>Education: Total</b>		24	1	25	10.1%	167	13	180	10.5%
	Elementary	15		15	6.1%	110	0	110	
	Secondary	9	1	10	4.0%	57	13	70	
<b>Engineering Physics</b>		2		2	0.8%	19	0	19	1.1%
<b>English: Total</b>		8	3	11	4.5%	48	18	66	3.9%
	Literature	3	7	7	2.8%	0	28	28	
	Writing	5		5	2.0%	20	4	24	
<b>Environmental Science</b>		2		2	0.8%	19	0	19	1.1%
<b>Government and Political Science</b>		10	2	12	4.9%	71	17	88	5.1%
<b>Health and Physical Education Total</b>		22		22	8.9%	85	11	96	5.6%
	Physical Education:	4		4	1.6%	25	11	36	2.1%
	Health Promo./Fitness/Exercise Science	8		8	3.2%	26	0	26	1.5%
	Sports Medicine/Athletic Training	10		10	4.0%	34	0	34	2.0%
<b>History</b>		11	2	13	5.3%	46	21	67	3.9%
<b>International Studies</b>		1	2	3	1.2%	15	2	17	1.0%
<b>Mathematics</b>		3	2	5	2.0%	15	2	17	1.0%
<b>Music: Total</b>		3	0	3	1.2%	44	4	48	2.8%
	Music:	2		2	0.8%	26	4	30	
	Education	1		1	0.4%	18	0	18	
<b>Music Theatre</b>		1		1	0.4%	9	1	10	0.6%
<b>Nursing</b>		17		17	6.9%	80	0	80	4.7%
<b>Philosophy</b>		2		2	0.8%	2	6	8	0.5%
<b>Philosophy and Religion</b>		1		1	0.4%	1	0	1	0.1%
<b>Physics</b>				0	0.0%	4	1	5	0.3%
<b>Psychology</b>		14		14	5.7%	104	4	108	6.3%
<b>Public Relations</b>		6		6	2.4%	59	5	64	3.7%
<b>Religion</b>		3		3	1.2%	6	3	9	0.5%
<b>Sociology</b>		4	3	7	2.8%	25	13	38	2.2%
<b>Total Undergraduate Student Majors</b>		227	20	247	100%	1521	190	1711	100%
Number of Students with two or more Majors				20	8.8%			190	12.5%
Number Undergraduate Degrees Awarded				227				1521	
<b>5 year Undergraduate/MBA</b>				9 Broken into specialties above		58		58 Broken into specialties above	
						0		0	
<b>MBA</b>		26	Includes 5 year	26		135	Includes 5 year	135	
<b>MED new program</b>		4		4					

### 2007-08 Graduating Degrees by Major Field of Study with 2004 - 2008 Minimum to Maximum Range



## *Faculty and Staff*

# West Virginia Wesleyan College

## Employment in All Departments

(As of Oct. 31st each year)

### Summary Pages

	Oct 31 2004		Oct 31 2005		Oct 31 2006		Oct 31 2007		Oct 31 2008	
	Full-time	Part-time	Full-time	Part-time	Full-time	Part-time	Full-time	Part-time	Full-time	Part-time
<b>Academic Departments</b>										
<b>Art</b>										
<b>Instruction</b>	4	1	4	1	3	1	2	2	2	2
<b>Academic Support</b>	0	0	0	0	0	0	0	0	0	0
<b>Music</b>										
<b>Instruction</b>	5	12	5	13	4	15	4	14	4	15
<b>Academic Support</b>	0	0	0	0	0	0	0	0	0	0
<b>English</b>										
<b>Instruction</b>	9	3	8	6	7	7	8	4	7	5
<b>Academic Support</b>	0	0	0	0	0	0	0	0	0	0
<b>Modern Language</b>					Now combined with English					
<b>Instruction</b>	1	2	1	2	0	0	0	0	0	0
<b>Academic Support</b>	0	0	0	0	0	0	0	0	0	0
<b>Communication</b>										
<b>Instruction</b>	5	0	4	0	4	0	4	1	4	0
<b>Academic Support</b>	0	0	0	0	0	0	0	0	0	0
<b>Dramatic Arts</b>										
<b>Instruction</b>	4	2	3	1	2	3	3	4	3	3
<b>Academic Support</b>	0	0	0	0	0	0	0	0	0	0
<b>Philosophy</b>										
<b>Instruction</b>	2	0	2	0	2	0	2	0	2	0
<b>Academic Support</b>	0	0	0	0	0	0	0	0	0	0
<b>Religion</b>										
<b>Instruction</b>	2	1	2	1	1	1	1	1	2	1
<b>Academic Support</b>	0	0	0	0	0	0	0	0	0	0
<b>Christian Education</b>										
<b>Instruction</b>	1	2	1	1	1	3	1	3	0	3
<b>Academic Support</b>	0	0	0	0	0	0	0	0	0	0
<b>Biology</b>										
<b>Instruction</b>	5	1	6	2	5	1	6	1	5	1
<b>Academic Support</b>	2	0	2	0	2	0	2	0	2	0
<b>Chemistry</b>										
<b>Instruction</b>	3	0	3	0	3	0	2	2	3	0
<b>Academic Support</b>	1	0	1	1	1	0	1	0	1	0
<b>Math / Computer Science</b>										
<b>Instruction</b>	4	1	5	1	3	2	3	2	4	1
<b>Academic Support</b>	0	0	0	0	0	0	0	0	0	0
<b>Engineering Physics</b>										
<b>Instruction</b>	2	2	2	2	2	1	2	0	2	1
<b>Academic Support</b>	0	2	0	1	1	1	0	1	2	1
<b>Nursing</b>										
<b>Instruction</b>	6	1	5	1	5	0	5	2	6	2
<b>Academic Support</b>	1	0	1	0	1	0	1	0	1	0

# West Virginia Wesleyan College

## Employment in All Departments

(As of Oct. 31st each year)

### Summary Pages (cont)

	Oct 31 2004		Oct 31 2005		Oct 31 2006		Oct 31 2007		Oct 31 2008	
	Full-time	Part-time	Full-time	Part-time	Full-time	Part-time	Full-time	Part-time	Full-time	Part-time
<b>History / Political Science</b>										
<b>Instruction</b>	7	5	6	5	5	4	5	4	5	4
<b>Academic Support</b>	0	0	0	0	0	0	0	0	0	0
<b>Psychology</b>										
<b>Instruction</b>	4	1	4	1	4	1	4	2	4	2
<b>Academic Support</b>	0	0	0	0	0	0	0	0	0	0
<b>Sociology</b>										
<b>Instruction</b>	3	2	3	1	4	1	2	3	3	4
<b>Academic Support</b>	0	0	0	0	0	0	0	0	0	0
<b>Business</b>										
<b>Instruction</b>	8.5	2	7.5	2	7.5	2	7.5	2	8.5	2
<b>Academic Support</b>	0	0	0	0	0	0	0	0	0	0
<b>Education</b>										
<b>Instruction</b>	5	1	4	6	5	5	6	6	6	7
<b>Academic Support</b>	1	0	1	0	1	0	1	0	1	0
<b>Learning Center</b>										
<b>Instruction</b>	0	0	0	0	0	0				
<b>Academic Support</b>	0	0	0	0	0	0				
<b>SASS</b>	3	4	4	3	4	3	4.5	4	4.5	3
<b>Lindamood Bell</b>	2	3	2	4	2	4	2	3	1	4
<b>Mentoring Advantage</b>							0	5	0	5
<b>Exercise Science</b>										
<b>Instruction</b>	4	12	4	13	4	5	3	9	5	9
<b>Academic Support</b>	0	0	0	0	0	0	0	0	0	0
<b>Family and Consumer Science (discontinued)</b>										
<b>Instruction</b>	0	0	0	0	0	0				
<b>Academic Support</b>	0	0	0	0	0	0				
<b>ESL</b>										
<b>Instruction</b>	0.5	2	0.5	2	0.5	2	0.5	2	0.5	2
<b>Academic Support</b>	0	0	0	0	0	0	0	0	0	0
<b>Writing Center</b>										
<b>Instruction</b>	0.5	0	0.5	0	0.5	0	0.5	0	0.5	0
<b>Academic Support</b>	0	0	0	0	0	0	0	0	0	0
<b>Distance Education</b>										
<b>Instruction</b>	0	0	0	0	0	0	0	0	0	0
<b>Academic Support</b>	0	0	0	0	0	0	0	0	0	0
<b>MBA( in addition to Business )</b>										
<b>Instruction</b>	0	7	0	5	0	7	0	8	0	8
<b>Academic Support</b>	0	1	0.75	0	0.75	0	1	0	0	0
<b>Environmental Institute</b>										
<b>Instruction</b>	0	0	0	0	0	0	0	0	0	0
<b>Academic Support</b>	0	1	0	0	0	0	0	0	0	0
<b>Academic Department Totals</b>										
<b>Instruction</b>	87.5	63	82.5	70	74.5	65	73.5	75	77.5	76
<b>Academic Support</b>	8	8	9.75	5	10.75	4	10.5	10	11.5	9
<b>Total Positions</b>	95.5	71	92.25	75	85.25	69	84	85	89	85

# West Virginia Wesleyan College

## Employment in All Departments

(As of Oct. 31st each year)

### Summary Pages (cont)

	Oct 31 2004		Oct 31 2005		Oct 31 2006		Oct 31 2007		Oct 31 2008	
	Full-time	Part-time	Full-time	Part-time	Full-time	Part-time	Full-time	Part-time	Full-time	Part-time
<b>Administrative Department</b>										
Acad. & Career Counseling	4	0	3	0	3	0	3	0	3	0
Admission	14	1	14	1	15	1	15.5	1	15.5	1
Alumni	2	0	2	0	2	0	2	0	2	0
Annual Giving/Capital Campaign	4	0	3	0	4	0				
Athletic Training	2	1	2	1	2	1	2	3	2	3
Athletics	2.5	1	2.5	1	1.5	0	2	0	2	5
Audio Visual Dept.	1	0	1	0	1	0	1	0	1	0
Baseball	1	1	1	1	1	1	1	1	1	2
Business	3	0	3	0	3	0	0	0	0	0
Campaign	1	1	1	1	0	0		0		0
Campus Center	0	0	0	0	0	0	0	0	0	0
Cheerleading	0	0	0	0	0	0	0	0	0	0
College Advancement (reorganized)	3	1	4	1	4	1	9	1	9	1
College Legal Counsel	0.5	0	0.5	0	0.5	0	0.5	0	0.5	0
Comptroller (reorganized 2007)	1	1	1	1	1	1	4	1	4	1
Computing Services	9	0	10	0	9	0	9	0	9	0
Counseling	2	1	2	1	2	1	2	1	2	1
Cross Country	0	0	0	0	0	0	0	0	0	0
Cross Country and Track	0	0	0	0	0	0	0	0	0	0
Dean of Students	2	0	2	0	3	0	3	0	3	1
Dean of the Chapel	2	1	2	1	1	2	2	1	2	1
Dean of Community Engagement									1	0
Dean of Graduate Programs									2	0
Financial Aid	5	0	5	0	3	0	4	0	4	0
Football	3	3	3	3	3	4	3	4	3	6
Golf	0	1	0	1	0	1	0	2	0	1
Greek Affairs Coordinator	0.5	0	0.5	0	0.5	0	0.5	0	0.5	0
Health Center	0	1	0	1	0	1	0	1	0	2
Housing / Dormitories	5	2	5	2	5	1	5	1	5	1
Institutional Research	1	0	1	0	1	0	1	0	1	0
Intercultural Relations	1	0	1	0	1	0	1	0	1	0
Intramural	0.5	0	0.5	0	0.5	0	0.5	0	0.5	0
Lacrosse	0	0	0	0	0	0	0	0	0	0
Library	8	1	8	1	7	1	8	1	8	1
M. Basketball	2	0	1	1	1	1	1	2	1	2
Marketing and Communication	4	0	5.25	0	5.25	0	5	0	4.25	1
Men's Soccer	1	1	1	0	1	0	1	1	1	2
Men's Tennis	0	1	0	1	0	1	0	0.5	0	0.5
Murmurmontis/Pharos	0	1	0	1	0	1	0	1	0	1
Office of Finance	2	0	2	0	2	0	2	0	2	0
Outdoor Recreation	0	1	0	2	0	2	0	2	0	2
Personnel	2	0	2	0	2	0	1	0	1	0
Planned Giving	2	0	0	0	0	0	0	0	0	0
Post Office	2	1	2	0	2	1	2	1	2	1
President	2	0	2	0	2	0	2	0	2	0
Student Accounts(reorganized)	3.5	0	3.5	1	3.5	1	5	0	5	0
Radio-WVWC-FM	0	0	0	0	0	0	0	0	0	0
Recycling Coordinator	0	0	0	0	0	0	0	0	0	0
Registrar	2	0	2	0	2	0	2	0	2	0
Security	5	4	5	4	6	2	6	3	6	3
Sleeth Gallery	0	1	0	1	0	1	0	1	0	0
Softball	1	1	1	1	1	1	1	2	1	2
Sports Information	0	2	0	2	0	2	0	2	0.75	1
Student Programming	1	0	1	0	1	0	1	0	1	0
Student Volunteer Programs	1	0	1	0	1	1	1	1	1	0
Swimming	1	1	1	1	1	0	1	1	1	1
Tennis	0	0	0	0	0	0	0	0	0	0
Track	1	2	1	2	1	2	1	2	1	2
Volleyball	1	1	1	1	0	2	1	1	1	1
VP Academic Affairs	3	1	3	2	2	1	2	3	2	3
W. Basketball	1	2	1	1	1	1	1	2	1	2
W. Soccer	1	1	1	1	1	1	1	1	1	2
W. Tennis	0	2	0	2	0	2	0	1.5	0	1.5
<b>Total Administration</b>	<b>116.5</b>	<b>40</b>	<b>114.75</b>	<b>41</b>	<b>109.75</b>	<b>39</b>	<b>116</b>	<b>46</b>	<b>119</b>	<b>55</b>
<b>Total College Positions</b>	<b>212</b>	<b>111</b>	<b>207</b>	<b>116</b>	<b>195</b>	<b>108</b>	<b>200</b>	<b>131</b>	<b>208</b>	<b>140</b>

# West Virginia Wesleyan College

2008-2009  
Fall Semester

## Profile of Full-Time Teaching Faculty

Title	Number	%	Tenured	%	Doctorate	%	Terminal Degree	%	9 Mo.	9 Mo.	% Change from
									Salary Ave. 2007-08	Salary Ave. 2008-09	
Professors	16		15	94%	16	100%	16	100%	\$56,645	\$56,332	-0.55%
Men	11	69%	10	91%	11	100%	11	100%	\$57,548	\$56,651	-1.58%
Women	5	31%	5	100%	5	100%	5	100%	\$54,840	\$55,631	1.40%
Associate Professors	28		24	86%	20	71%	25	89%	\$48,641	\$49,793	2.03%
Men	14	50%	11	79%	10	71%	12	86%	\$50,378	\$51,529	2.03%
Women	14	50%	13	93%	10	71%	13	93%	\$46,789	\$48,058	2.24%
Assistant Professor	23		0	0%	13	57%	14	61%	\$40,536	\$43,866	5.88%
Men	13	57%	0	0%	6	46%	7	54%	\$39,911	\$43,527	6.38%
Women	10	43%	0	0%	7	70%	7	70%	\$41,083	\$44,306	5.69%
Instructors	9		0	0%	0	0%	0	0%	\$36,464	\$38,719	3.98%
Men	4	44%	0	0%	0	0%	0	0%	\$37,750	\$39,627	3.31%
Women	5	56%	0	0%	0	0%	0	0%	\$35,500	\$37,992	4.40%
Total	76		39	51%	49	64%	55	72%	\$47,758	\$48,030	0.48%
Total Men	42	55%	21	50%	27	64%	30	71%	\$49,717	\$49,497	-0.39%
Total Women	34	45%	18	53%	22	65%	25	74%	\$45,501	\$46,312	1.43%

Of the 16 faculty not holding doctorates, all are qualified at the Master's or equivalent professional level.

Faculty Census Head Count		
Full-Time	Part-Time	Total
76	80	156

This count does not include SASS staff or instructors of developmental courses.

### Faculty Full-Time Equivalent

1999	2000	2001	2002	2003	2004	2005	2006	2007	2008
107.0	103.9	98.23	99.73	106.0	106.7	106.7	94.0	92.0	101.2

**Faculty FTE** = Semester Faculty Load Hours Divided by 12. This does include load hours for all instructors of traditional undergraduate courses.

### Student Faculty Ratio

1999	2000	2001	2002	2003	2004	2005	2006	2007	2008
14.6:1	13.7:1	14.4:1	14.9:1	14.8:1	13.8:1	12.3:1	12.7:1	13.2:1	12:4:1

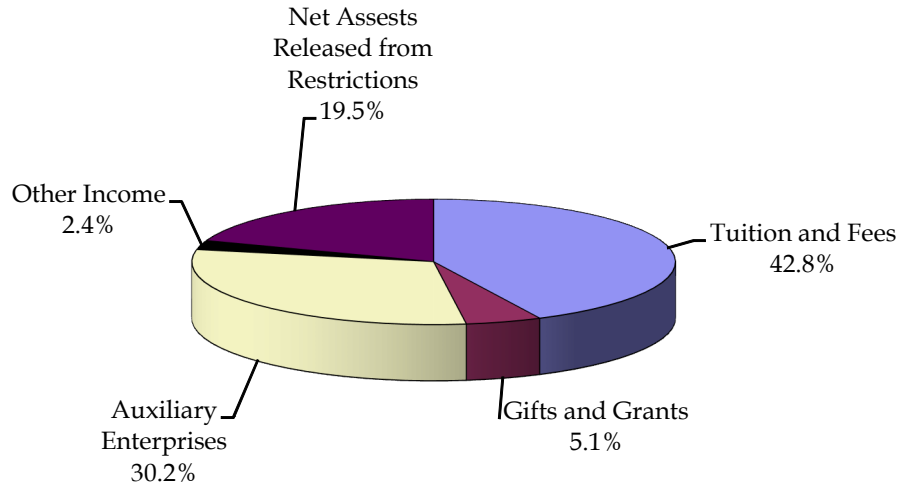
(Fall 2008 FTE traditional undergraduates=1257)

**Student - Faculty Ratio** = ((Total Traditional Undergraduate FTE)/Faculty FTE).

# *Finances*

# West Virginia Wesleyan College

## Unrestricted Revenues and Gains FY 2008

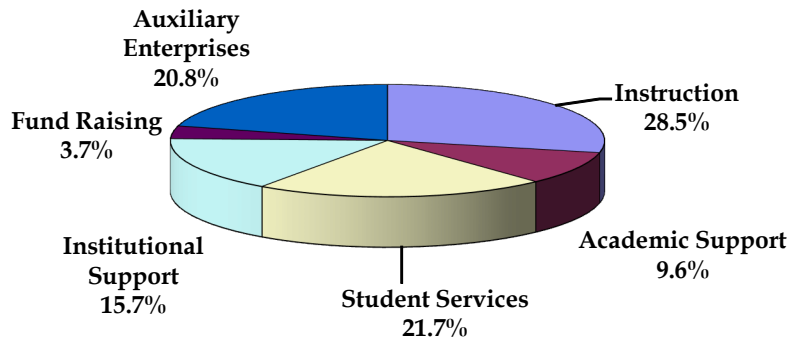


(Revenues in Million Dollars)

	<u>FY 2004</u>	<u>FY 2005</u>	<u>FY2006</u>	<u>FY 2007</u>	<u>FY 2008</u>
Tuition and Fees	\$ 13.66	\$ 13.15	\$ 12.54	\$ 11.07	\$ 10.80
Federal Grants Contributions					
Gifts and Grants	\$ 1.07	\$ 1.04	\$ 0.86	\$ 1.10	\$ 1.28
Auxiliary Enterprises	\$ 8.44	\$ 7.30	\$ 6.84	\$ 6.42	\$ 7.63
Investment Income	\$ 0.42	.	\$ 0.54	\$ 0.53	\$ 0.61
Net Assets Released from Restriction:	\$ 3.36	\$ 4.06	\$ 2.88	\$ 5.22	\$ 4.92
<b>Total Current Funds Revenues</b>	<b>\$ 26.94</b>	<b>\$ 25.54</b>	<b>\$ 23.66</b>	<b>\$ 24.33</b>	<b>\$ 25.24</b>
<b>Fall FTE Enrollment</b>	<b>1594</b>	<b>1503</b>	<b>1352</b>	<b>1194</b>	<b>1253</b>

# West Virginia Wesleyan College

## Expenditures by Category FY 2008



(Expenditures in Million Dollars)

	<u>FY 2004</u>	<u>FY 2005</u>	<u>FY 2006</u>	<u>FY 2007</u>	<u>FY 2008</u>
Instruction	\$ 7.06	\$ 6.92	\$ 6.47	\$ 7.11	\$ 7.01
Academic Support	\$ 3.10	\$ 2.12	\$ 2.02	\$ 2.32	\$ 2.36
Student Services	\$ 4.75	\$ 4.99	\$ 4.42	\$ 5.08	\$ 5.35
Institutional Support	\$ 3.14	\$ 3.52	\$ 3.96	\$ 3.66	\$ 3.87
Fund Raising	\$ 0.94	\$ 1.96	\$ 1.97	\$ 0.91	\$ 0.90
Operations and Maintenance of Plant*	\$ 1.89	\$ 1.00	\$ 0.93	\$ -	
Auxiliary Enterprises	\$ 5.34	\$ 5.38	\$ 5.12	\$ 5.19	\$ 5.13
<b>Total Current Funds Expenditures</b>	<b>\$ 26.21</b>	<b>\$ 25.88</b>	<b>\$ 24.88</b>	<b>\$ 24.27</b>	<b>\$ 24.62</b>
<b>Fall FTE Enrollment</b>	<b>1594</b>	<b>1503</b>	<b>1352</b>	<b>1194</b>	<b>1253</b>

\* FY 2007 and FY 2008 Operation and Maintenance of Plant is allocated to into the functional categories as is required by current auditing guidelines)

## West Virginia Wesleyan College Recent Tuition and Fee History

			Technology	Technology								
		Student	Infrastructure F	Laptop Fee	Technology	Facilities			Room &		Dollar	Percent
	<u>Tuition</u>	<u>Activity Fee</u>	<u>(All Students)</u>	<u>Freshmen</u>	<u>Fee</u>	<u>Fee**</u>	<u>Room</u>	<u>Board</u>	<u>Board</u>	<u>TOTAL</u>	<u>Increase</u>	<u>Increase</u>
1989-90	\$ 8,430	NA	NA	NA					\$ 3,000	\$ 11,430	\$ 1,790	8.96%
1990-91	\$ 10,930	NA	NA	NA					\$ 3,000	\$ 13,930	\$ 2,500	21.87%
1991-92	\$ 11,830	NA	NA	NA					\$ 3,150	\$ 14,980	\$ 1,050	7.54%
1992-93	\$ 12,605	NA	NA	NA					\$ 3,350	\$ 15,955	\$ 975	6.51%
1993-94	\$ 13,400	NA	NA	NA					\$ 3,500	\$ 16,900	\$ 945	5.92%
1994-95	\$ 14,200	NA	NA	NA					\$ 3,775	\$ 17,975	\$ 1,075	6.36%
1995-96	\$ 14,750	NA	NA	NA					\$ 3,850	\$ 18,600	\$ 625	3.48%
1996-97	\$ 14,975	\$ 200	NA	NA					\$ 3,975	\$ 19,150	\$ 550	2.96%
1997-98	\$ 15,275	\$ 200	\$ 300	\$ 500			\$ 1,850	\$ 2,125	\$ 3,975	\$ 20,250	\$ 1,100	5.74%
1998-99	\$ 15,750	\$ 200	\$ 300	\$ 500			\$ 1,975	\$ 2,125	\$ 4,100	\$ 20,850	\$ 600	2.96%
1999-00	\$ 16,300	\$ 200	\$ 300	\$ 750			\$ 1,975	\$ 2,250	\$ 4,225	\$ 21,775	\$ 925	4.44%
2000-01	\$ 16,800	\$ 200	\$ 300	\$ 750			\$ 2,030	\$ 2,190	\$ 4,220	\$ 22,270	\$ 495	2.27%
2001-02	\$ 17,300	\$ 200	\$ 450	\$ 750			\$ 2,030	\$ 2,190	\$ 4,220	\$ 22,920	\$ 650	2.92%
2002-03	\$ 17,900	\$ 200			\$ 1,200		\$ 2,430	\$ 2,240	\$ 4,820	\$ 23,970	\$ 1,050	4.58%
2003-04 with STI	\$ 18,450	\$ 200			\$ 1,200		\$ 2,700	\$ 2,500	\$ 5,200	\$ 25,050	\$ 1,080	4.51%
2004-05	\$ 19,450	\$ 200			\$ 600	\$ 200	\$ 2,780	\$ 2,500	\$ 5,200	\$ 25,730	\$ 680	2.71%
2005-06	\$ 20,250	\$ 200			\$ 600	\$ 200	2,780	2,850	\$ 5,550	\$ 26,880	\$ 1,150	4.47%
2006-07	20,250	200	-	-	600	200	2,780	2,850	5,550	\$ 26,880	\$ -	0.00%
2007-08	20,980	200			650		3,200	2,960	6,160	\$ 27,990	\$ 1,110	4.13%
<b>2008-2009</b>	<b>22,030</b>	<b>200</b>			<b>650</b>		<b>3,360</b>	<b>3,110</b>	<b>6,470</b>	\$ 29,350	\$ 1,360	4.86%
** combined with tuition in 2007-08												
Source: Schedule of Tuition and Fees each year.												

*Comparison Institutions  
Group Data*

# Peer and Competitive Institutions by 2008-2009 Total Direct Cost

## Private Institutions

2005-2006 Position	2006-2007 Position	2007-2008 Position	2008-2009 Position	State	Name	2007-2008			2008-2009			Change			
						2007-2008 Undergraduate Tuition and Fees	2007-2008 Room and Board	2007-2008 Direct Costs	2008-2009 Undergraduate Tuition and Fees	2008-2009 Room and Board	2008-2009 Direct Costs	Tuition and Fee \$ Increase 06-07 to 07-08	Tuition and Fee % increase	Total Direct Cost \$ increase 06-07 to 07-08	Total Direct Cost % increase
2	1	1	1	PA	Washington & Jefferson College*	\$ 29,532	\$ 8,030	\$ 37,562	\$ 31,476	\$ 8,488	\$ 39,964	\$ 1,944	6.6%	\$ 2,402	6.4%
1	2	2	2	PA	Albright College	\$ 28,884	\$ 8,484	\$ 37,368	\$ 30,570	\$ 8,670	\$ 39,240	\$ 1,686	5.8%	\$ 1,872	5.0%
3	3	3	3	VA	Roanoke College*	\$ 26,250	\$ 8,726	\$ 34,976	\$ 27,935	\$ 9,285	\$ 37,220	\$ 1,685	6.4%	\$ 2,244	6.4%
4	4	5	4	PA	Lycoming College	\$ 27,139	\$ 7,238	\$ 34,377	\$ 28,764	\$ 7,672	\$ 36,436	\$ 1,625	6.0%	\$ 2,059	6.0%
5	5	4	5	VA	Lynchburg College*	\$ 27,215	\$ 7,370	\$ 34,585	\$ 28,105	\$ 7,570	\$ 35,675	\$ 890	3.3%	\$ 1,090	3.2%
7	6	6	6	PA	Westminster College*	\$ 25,530	\$ 7,660	\$ 33,190	\$ 27,000	\$ 8,110	\$ 35,110	\$ 1,470	5.8%	\$ 1,920	5.8%
6	7	7	7	PA	Duquesne University*	\$ 23,950	\$ 8,546	\$ 32,496	\$ 25,475	\$ 8,888	\$ 34,363	\$ 1,525	6.4%	\$ 1,867	5.7%
8	8	8	8	OH	Marietta College*	\$ 24,842	\$ 7,390	\$ 32,232	\$ 26,080	\$ 7,764	\$ 33,844	\$ 1,238	5.0%	\$ 1,612	5.0%
9	9	9	9	OH	Otterbein College	\$ 25,065	\$ 7,149	\$ 32,214	\$ 26,319	\$ 7,461	\$ 33,780	\$ 1,254	5.0%	\$ 1,566	4.9%
10	10	10	10	VA	Virginia Wesleyan College	\$ 24,515	\$ 6,900	\$ 31,415	\$ 26,438	\$ 7,100	\$ 33,538	\$ 1,923	7.8%	\$ 2,123	6.8%
11	11	11	11	WV	Wheeling Jesuit University*	\$ 23,490	\$ 7,230	\$ 30,720	\$ 24,390	\$ 7,650	\$ 32,040	\$ 900	3.8%	\$ 1,320	4.3%
15	14	13	12	NC	Elon College*	\$ 22,166	\$ 7,296	\$ 29,462	\$ 24,076	\$ 7,770	\$ 31,846	\$ 1,910	8.6%	\$ 2,384	8.1%
12	12	12	13	WV	University of Charleston*	\$ 22,050	\$ 7,930	\$ 29,980	\$ 23,120	\$ 8,325	\$ 31,445	\$ 1,070	4.9%	\$ 1,465	4.9%
16	16	16	14	NC	High Point University*	\$ 19,850	\$ 7,960	\$ 27,810	\$ 22,100	\$ 8,900	\$ 31,000	\$ 2,250	11.3%	\$ 3,190	11.5%
14	13	14	15	OH	Mount Union College	\$ 22,050	\$ 6,700	\$ 28,750	\$ 23,120	\$ 7,050	\$ 30,170	\$ 1,070	4.9%	\$ 1,420	4.9%
<b>13</b>	<b>15</b>	<b>15</b>	<b>16</b>	<b>WV</b>	<b>West Virginia Wesleyan College</b>	<b>\$ 21,830</b>	<b>\$ 6,160</b>	<b>\$ 27,990</b>	<b>\$ 22,880</b>	<b>\$ 6,470</b>	<b>\$ 29,350</b>	<b>\$ 1,050</b>	<b>4.8%</b>	<b>\$ 1,360</b>	<b>4.9%</b>
17	17	18	17	NC	Wingate College*	\$ 18,480	\$ 7,100	\$ 25,580	\$ 19,350	\$ 7,700	\$ 27,050	\$ 870	4.7%	\$ 1,470	5.7%
20	18	17	18	WV	Bethany College*	\$ 18,205	\$ 7,770	\$ 25,975	\$ 18,695	\$ 8,160	\$ 26,855	\$ 490	2.7%	\$ 880	3.4%
18	19	19	19	WV	Davis & Elkins College*	\$ 18,745	\$ 6,350	\$ 25,095	\$ 20,060	\$ 6,700	\$ 26,760	\$ 1,315	7.0%	\$ 1,665	6.6%
19	20	20	20	OH	Muskingum College	\$ 17,970	\$ 7,000	\$ 24,970	\$ 19,125	\$ 7,350	\$ 26,475	\$ 1,155	6.4%	\$ 1,505	6.0%
21	21	21	21	PA	Waynesburg College	\$ 16,420	\$ 6,700	\$ 23,120	\$ 17,080	\$ 7,050	\$ 24,130	\$ 660	4.0%	\$ 1,010	4.4%
22	22	22	22	PA	Grove City College*	\$ 11,500	\$ 6,134	\$ 17,634	\$ 12,074	\$ 6,440	\$ 18,514	\$ 574	5.0%	\$ 880	5.0%
					<b>Average</b>	<b>\$ 22,531</b>	<b>\$ 7,356</b>	<b>\$ 29,886</b>	<b>\$ 23,829</b>	<b>\$ 7,753</b>	<b>\$ 31,582</b>	<b>\$ 1,298</b>	<b>5.7%</b>	<b>\$ 1,696</b>	<b>5.7%</b>
					<b>Minimum</b>	<b>\$ 11,500</b>	<b>\$ 6,134</b>	<b>\$ 17,634</b>	<b>\$ 12,074</b>	<b>\$ 6,440</b>	<b>\$ 18,514</b>	<b>\$ 490</b>	<b>2.7%</b>	<b>\$ 880</b>	<b>3.2%</b>
					<b>Maximum</b>	<b>\$ 29,532</b>	<b>\$ 8,726</b>	<b>\$ 37,562</b>	<b>\$ 31,476</b>	<b>\$ 9,285</b>	<b>\$ 39,964</b>	<b>\$ 2,250</b>	<b>11.3%</b>	<b>\$ 3,190</b>	<b>11.5%</b>
					<b>Median</b>	<b>\$ 22,828</b>	<b>\$ 7,267</b>	<b>\$ 30,350</b>	<b>\$ 24,233</b>	<b>\$ 7,686</b>	<b>\$ 31,943</b>	<b>\$ 1,246</b>	<b>5.4%</b>	<b>\$ 1,589</b>	<b>5.4%</b>
					<b>#National Average</b>	<b>\$ 23,745</b>	<b>\$ 8,581</b>	<b>\$ 32,326</b>	<b>\$ 25,143</b>	<b>\$ 8,989</b>	<b>\$ 34,132</b>	<b>\$ 1,398</b>	<b>5.9%</b>	<b>\$ 1,806</b>	<b>5.6%</b>

## Public Institutions

	State	Name	2007-2008				2008-2009				Change	
			In-State Tuition Fees	Out of State Tuition Fees	Room and Board	Total In-State Direct Cost	In-State Tuition Fees	Out of State Tuition Fees	Room and Board	Total In-State Direct Cost	Total Direct Cost \$ increase 07-08 to 08-09	Total Direct Cost % increase
	OH	Ohio University*	\$ 8,727	\$ 17,961	\$ 8,427	\$ 17,154	\$ 8,907	\$ 17,871	\$ 8,906	\$ 17,813	\$ 659	3.8%
	MD	Frostburg State University*	\$ 6,550	\$ 16,162	\$ 7,600	\$ 14,150	\$ 6,614	\$ 16,810	\$ 7,016	\$ 13,630	\$ (520)	-3.7%
	VA	James Madison University*	\$ 6,666	\$ 17,386	\$ 7,108	\$ 13,774	\$ 6,964	\$ 18,458	\$ 7,458	\$ 14,422	\$ 648	4.7%
	WV	West Virginia University*	\$ 4,722	\$ 14,600	\$ 6,826	\$ 11,548	\$ 5,100	\$ 15,770	\$ 7,434	\$ 12,534	\$ 986	8.5%
	WV	Marshall University*	\$ 4,410	\$ 11,324	\$ 6,492	\$ 10,902	\$ 4,598	\$ 11,702	\$ 7,210	\$ 11,808	\$ 906	8.3%
	WV	Shepherd College*	\$ 4,566	\$ 12,036	\$ 6,985	\$ 11,551	\$ 4,898	\$ 12,812	\$ 6,983	\$ 11,881	\$ 330	2.9%
	WV	Concord College*	\$ 4,414	\$ 9,806	\$ 6,280	\$ 10,694	\$ 4,578	\$ 10,170	\$ 6,530	\$ 11,108	\$ 414	3.9%
	WV	Fairmont State*	\$ 4,632	\$ 9,556	\$ 6,315	\$ 10,947	\$ 4,804	\$ 10,370	\$ 7,020	\$ 11,824	\$ 877	8.0%

\* Indicates Colleges and Universities with which we compete for students  
 # Private 4 year National Average according to the College Board Trends in College Pricing Report 2008

Sources: US News Best Colleges 2009 and IPEDS Peer Analysis Tool

## West Virginia Wesleyan College Comparison Group 2008-09

2008-09 10 School Peer Group Basic Characteristics

Institution Name	State	Carnegie Classification 2005: Basic(HD2007)	Carnegie Classification 2005: Undergraduate Profile(HD2007)	Carnegie Classification 2005: Enrollment Profile(HD2007)	Carnegie Classification 2005: Size and Setting(HD2007)	Athletic Affiliation	Fall 2007 FTE Students	Value of endowment assets at the end of the fiscal year(F0607)
Asbury College	KY	21 (BA A&S)	10 (FT 4yr, Sel, LTR)	3 (Vhigh UG)	11 (Sm 4 yr High. Res.)	NAIA	1295	\$37,817,428
Kentucky Wesleyan College	KY	21 (BA A&S)	11 (FT 4yr, Sel, HTR)	2 (Only UG 4 yr)	7 (VSm 4 yr Prim. Res.)	NCAA II	919	\$26,981,114
Heidelberg College	OH	20 (MA and Univ. Smaller)	10 (FT 4yr, Sel, LTR)	3 (Vhigh UG)	11 (Sm 4 yr High. Res.)	NCAA III	1340	\$43,026,729
Wilmington College	OH	22 (BA Diverse Fields)	8 (Med. FT 4yr, Sel, HTR)	3 (Vhigh UG)	10 (Sm 4 yr Prim. Res.)	NCAA III	1431	\$23,235,270
King College	TN	22 (BA Diverse Fields)	11 (FT 4yr, Sel, HTR)	3 (Vhigh UG)	8 (VSm 4 yr High Res.)	NAIA	1324	\$44,962,035
Maryville College	TN	21 (BA A&S)	12 (FT 4yr, More Sel, LTR)	2 (Only UG 4 yr)	11 (Sm 4 yr High. Res.)	NCAA III	1167	\$41,679,336
Mary Baldwin College	VA	20 (MA and Univ. Smaller)	8 (Med. FT 4yr, Sel, HTR)	4 (High UG)	10 (Sm 4 yr Prim. Res.)	NCAA III	1317	\$38,007,502
Virginia Wesleyan College	VA	21 (BA A&S)	11 (FT 4yr, Sel, HTR)	2 (Only UG 4 yr)	10 (Sm 4 yr Prim. Res.)	NCAA III	1274	\$60,586,304
Bethany College	WV	21 (BA A&S)	10 (FT 4yr, Sel, LTR)	2 (Only UG 4 yr)	8 (VSm 4 yr High Res.)	NCAA III	808	\$44,529,849
University of Charleston	WV	22 (BA Diverse Fields)	11 (FT 4yr, Sel, HTR)	3 (Vhigh UG)	8 (VSm 4 yr High Res.)	NCAA II	1343	\$21,595,318
West Virginia Wesleyan College	WV	21 (BA A&S)	10 (FT 4yr, Sel, LTR)	3 (Vhigh UG)	11 (Sm 4 yr High. Res.)	NCAA II	1247	\$45,350,073

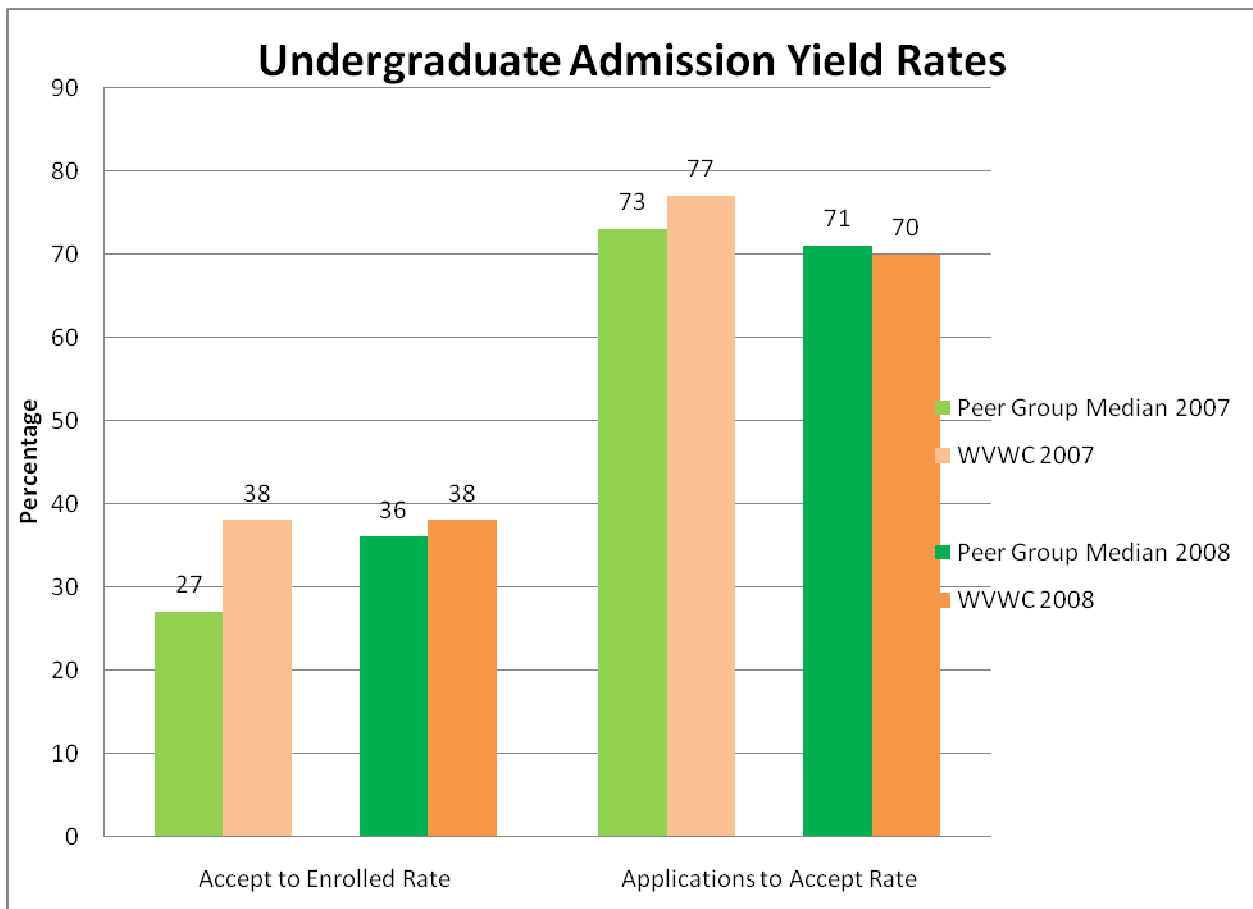
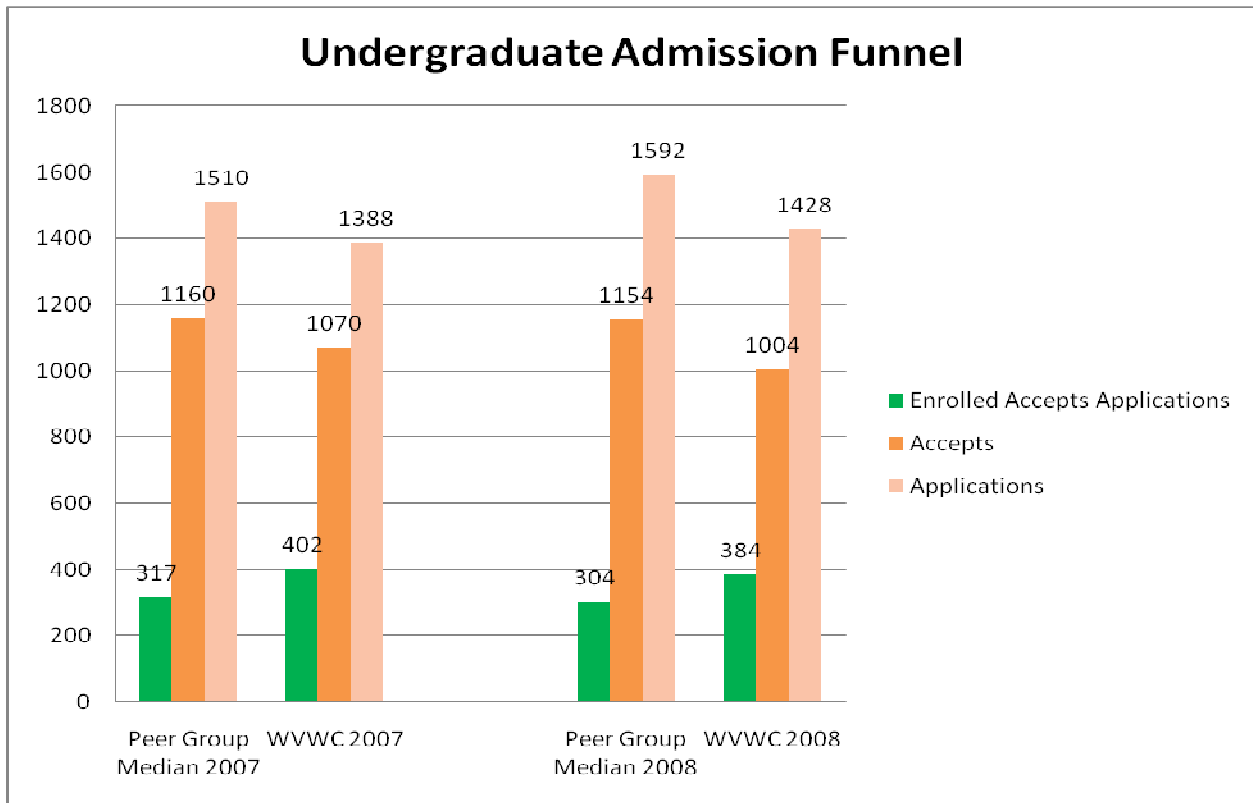
Count	
75% tile	
Median	
25% tile	
Average	

10	11
1336	\$44,745,942
1306	\$41,679,336
1194	\$32,399,271
1222	\$38,888,269

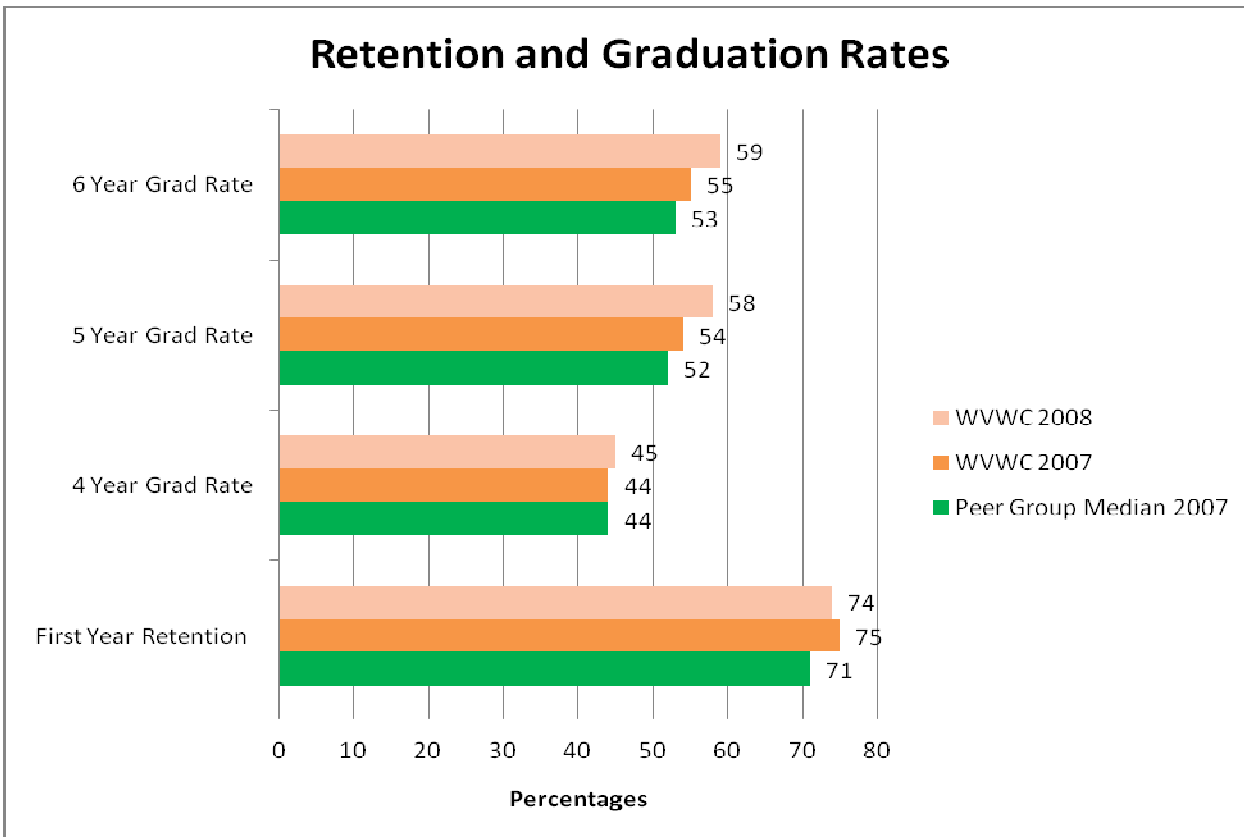
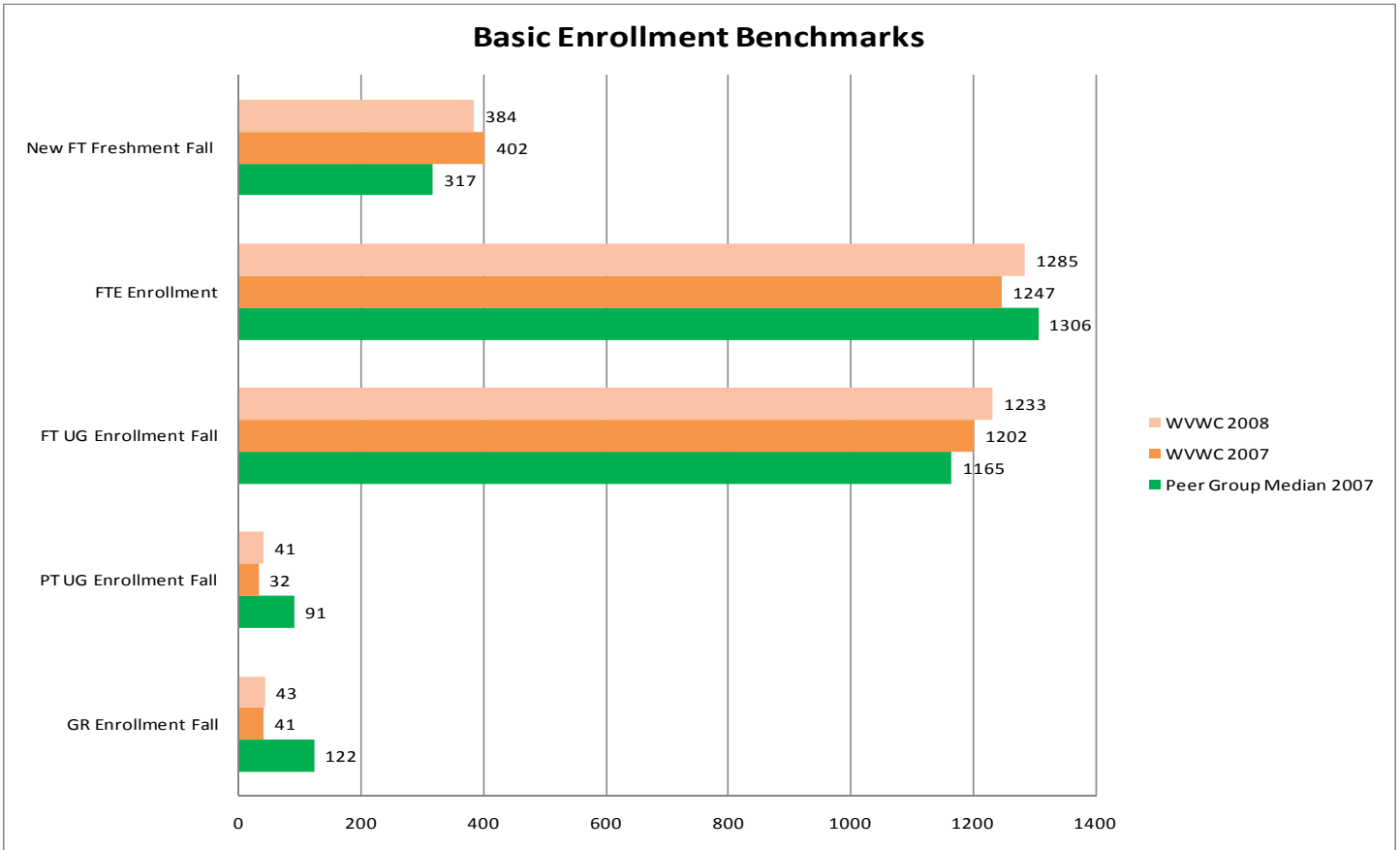
\*WVWC Baseline Comparison Group Criteria: These 10 schools are a subset of the following criteria:

States	WV, OH, KY, VA, TN
CC2005 Basic	Masters (Small), BA( LA), BA (Comp)
CC2005 (Undergraduate Profile)	FT, Sel., FT More Sel., Med FT Sel.
CC2005 (Enrollment Profile)	Exclusively to Majority Undergraduate
CC2005 (Size and Setting)	Very Small and Small primarily and highly residential
FTE Enrollment	500 to 1500
Endowment	\$15 Million to \$65 Million

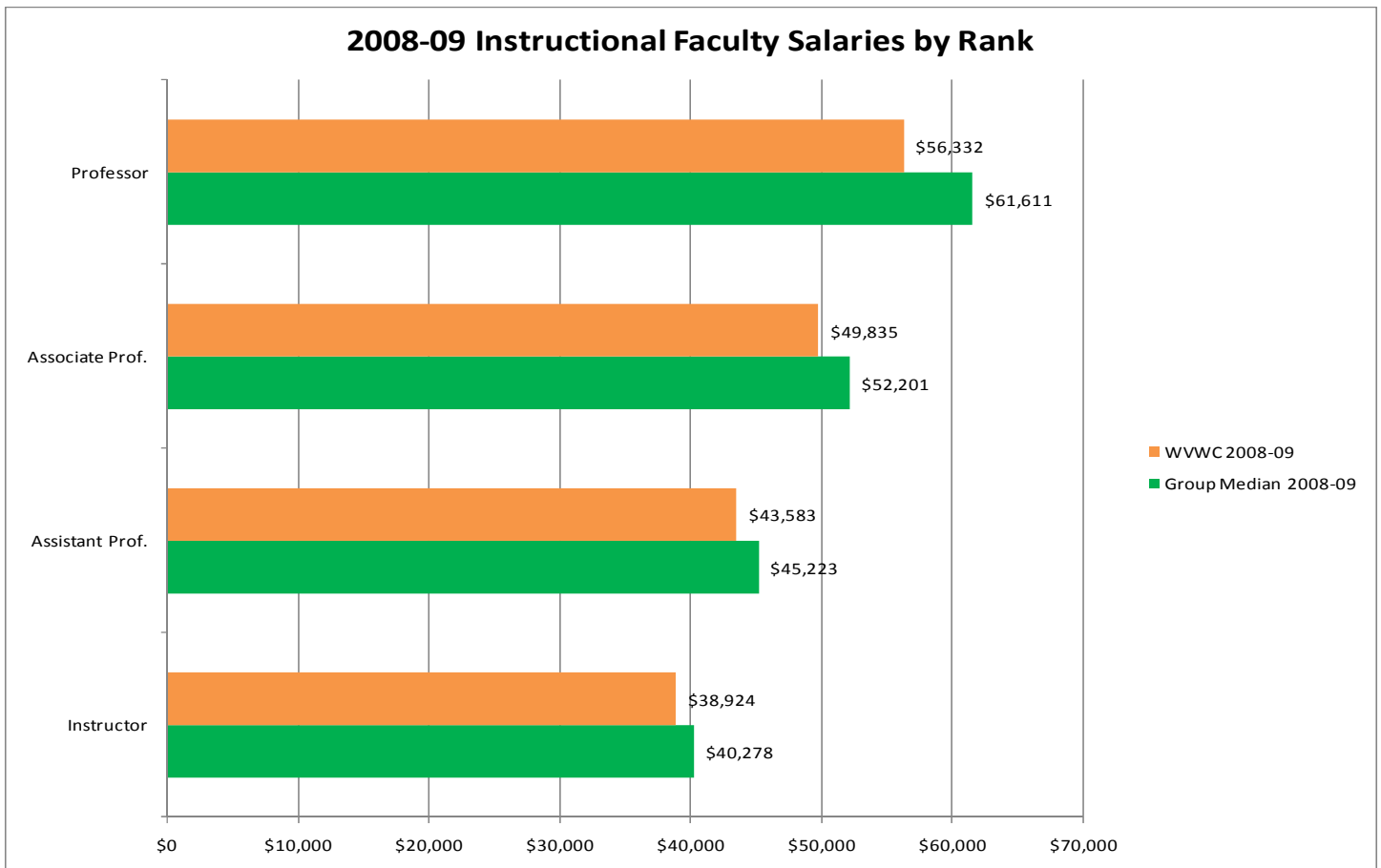
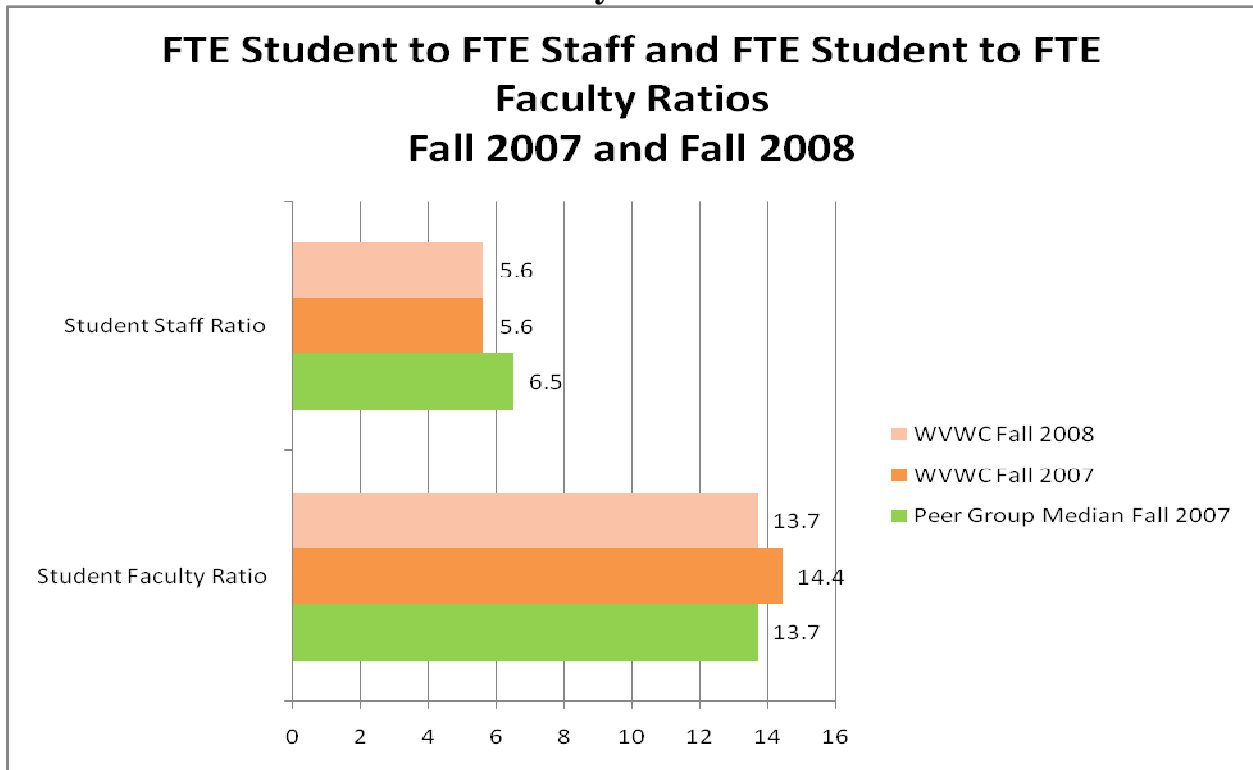
**Selected Statistics  
WVWC and Comparison School Benchmarks  
Admission Data**



## Enrollment and Retention Comparisons

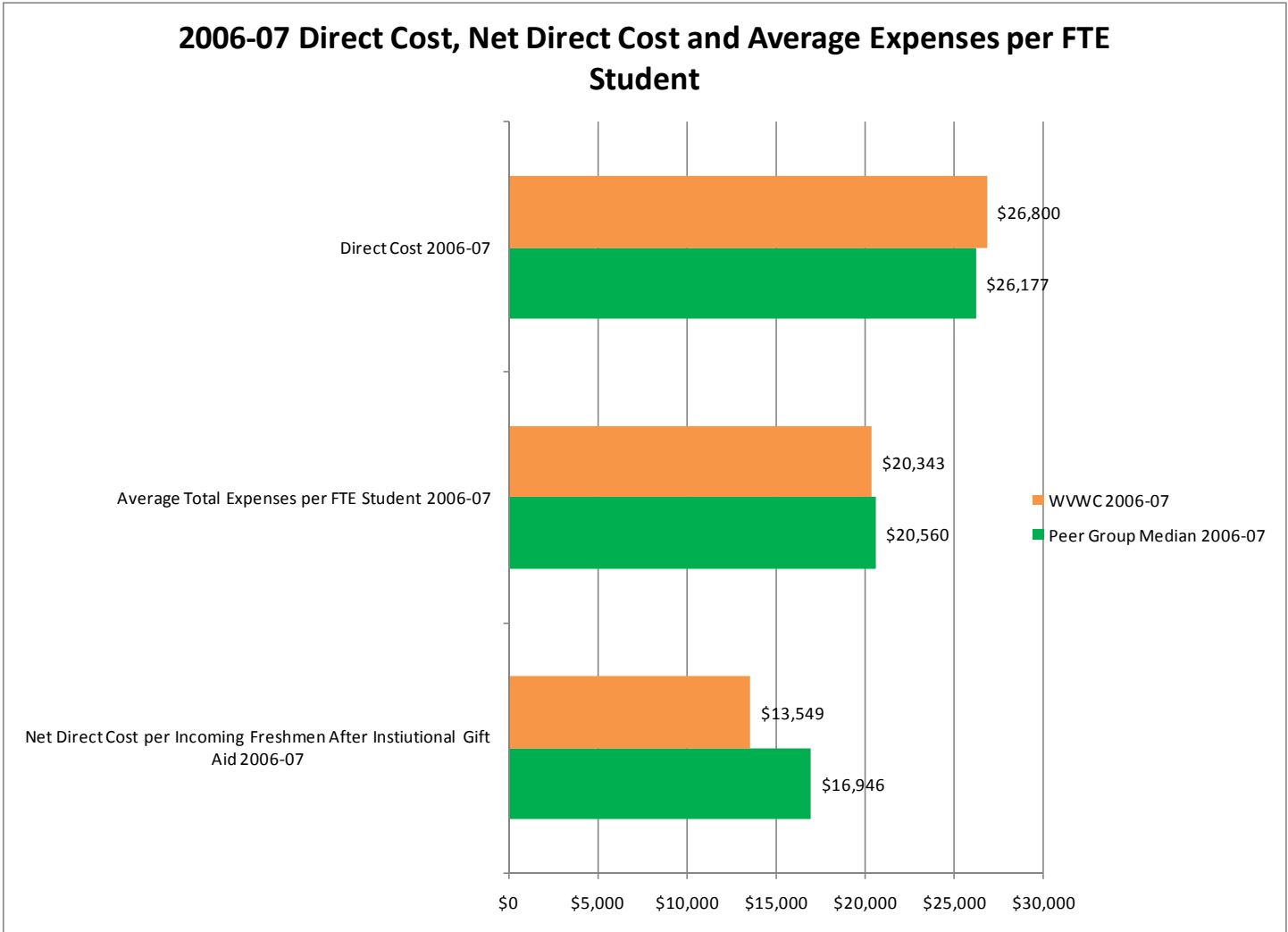


**Selected Statistics  
WVWC and Comparison School Benchmarks  
Faculty and Staff**



Source: IPEDS Peer Analysis System January, 2009

**Selected Statistics**  
**WVWC and Comparison School Benchmarks**  
**Direct Cost, Net Direct Cost and Expenses per FTE Student**



Source: IPEDS Peer Analysis System January, 2009