



West Virginia Wesleyan College Fact Book

COMPILED BY

TAMMY CRITES, DIRECTOR OF INSTITUTIONAL RESEARCH

Table of Contents

Mission and Organizational Structure.....	2
West Virginia Wesleyan College Statement of Mission	3
Wesleyan Accreditation	3
Organizational Chart Fall 2016-17	4
West Virginia Wesleyan College Administrative Executive Officers 2016-2017	5
Administrative Executive Officers	5
Staff Council Officers 2016-17	5
West Virginia Wesleyan College Academic Structure 2016-17	6
Academic School Directors.....	7
Faculty Senate 2016-17	7
Executive Committee of Faculty Assembly.....	7
Fall 2016 New Students	8
First-time Full-time Freshmen Financial Aid Profile	12
Fall 2016 Student Body	13
Historical Enrollment Summary.....	13
Fall 2016 All Students by Gender, Race and Ethnicity.....	18
Declared Academic First and Second Majors by School- Fall 2016.....	20
All Student Athletes by Scholarship Status.....	25
Student Outcomes	26
Institutional Yearly Retention Rates	27
Yearly Retention and Graduation Rates	28
Degrees Awarded by Major Field of Study	29
2015-2016 Placement Report.....	33
Faculty and Staff	34
Fall 2016 Employee Summary	35
Faculty Profile	36
Financials and Fund Raising.....	37
Unrestricted Revenues and Gains	38
Expenditures by Category	39
Giving by Source	40
West Virginia Wesleyan College Benchmark Institutions	42

Mission and Organizational Structure



West Virginia Wesleyan College Statement of Mission

West Virginia Wesleyan College challenges its students to a life-long commitment to develop their intellectual, ethical, spiritual, and leadership potential and to set and uphold standards of excellence. Firmly rooted in the liberal arts tradition and closely related to The United Methodist Church, the College is a community of learning based on fundamental principles formed at the intersection of Christian faith and liberal education: intellectual rigor, self-discovery, human dignity, mutual support, social justice, self-discipline, mental and physical wellness, the appreciation of diversity and the natural world, and the judicious use of resources. The College recognizes and affirms its interdependence with the external communities - local, regional, national, and global - and its covenant with the people of West Virginia to share its educational and cultural resources.

West Virginia Wesleyan College prepares its students through its curriculum of arts and sciences, pre-professional, professional, and graduate studies, and its rich campus life program. As a residential institution of higher education, the College aspires to graduate broadly educated men and women who

- Think critically and creatively,
- Communicate effectively,
- Act responsibly, and
- Demonstrate their local and world citizenship through service

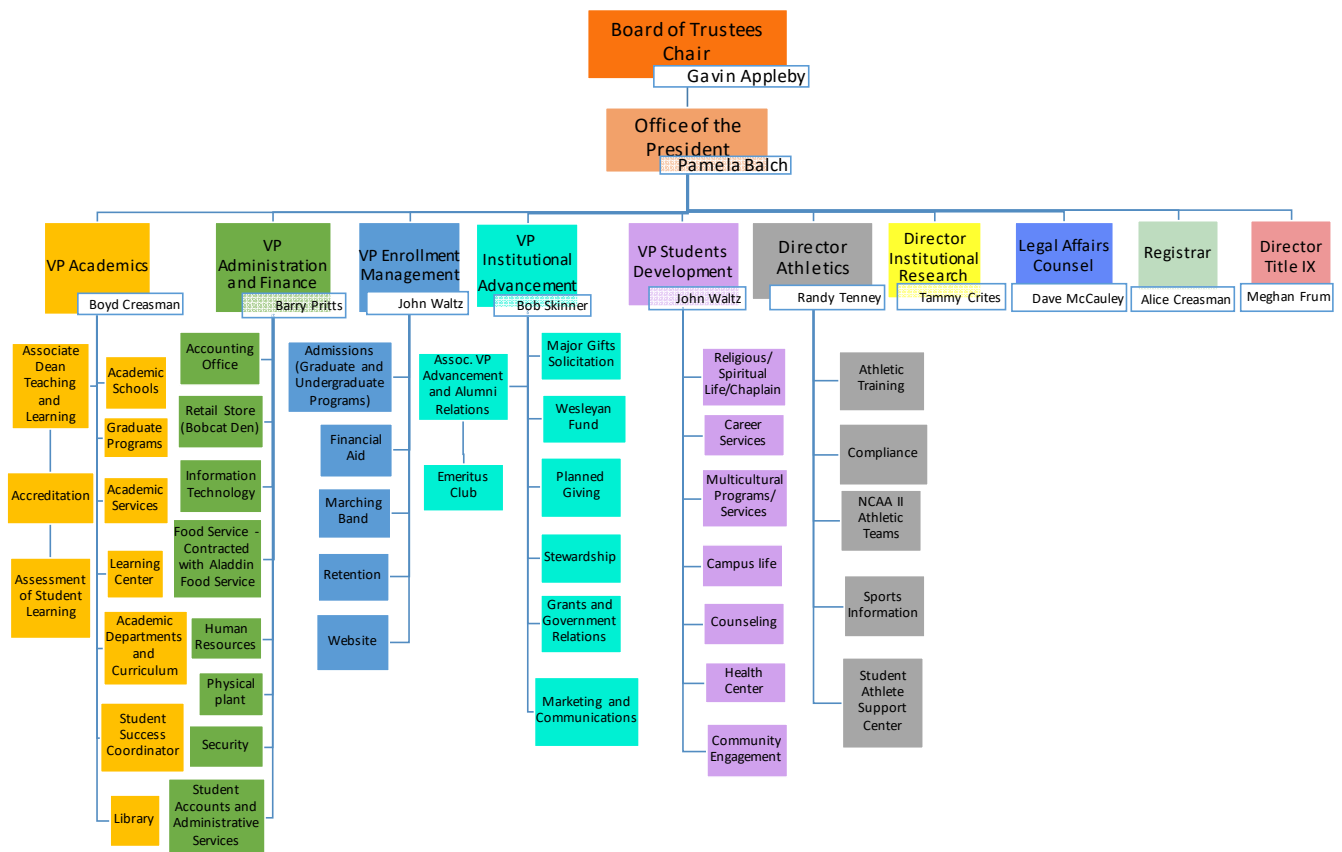
Wesleyan Accreditation

West Virginia Wesleyan is accredited by The Higher Learning Commission (30 North LaSalle Street, Suite 2400, Chicago, IL 60602-2504; telephone 1-800-621-7440) and approved by the University Senate of The United Methodist Church. It is a member of the National Association of Schools of Music and is approved by the West Virginia Department of Education. The College participates in the Interstate Certification Project, whereby a number of states certify teachers graduating from Wesleyan's Department of Education. The nursing program is fully accredited by the West Virginia Board of Examiners for Registered Nurses (101 Dee Drive, Suite 102, Charleston, WV 25311- 1620; telephone 304-558-3596), and accredited by the Accreditation Commission for Education in Nursing, Inc., (3343 Peachtree Road NE, Suite 850, Atlanta, GA, 30326; telephone 1-866-747-9965). The athletic training program is accredited by the Commission on Accreditation of Athletic Training Education (CAATE), (6836 Austin Center Blvd., Suite 250, Austin, TX 78731-3193, 512-733-9700)*. The School of Business is a candidate for accreditation with the Accreditation Council for Business Schools and Programs (ACBSP), (11520 West 119th Street, Overland Park, KS 66213, 913-339-9356).

The College holds membership in the Appalachian College Association, The National Association of Independent Colleges and Universities, the American Association of Colleges for Teacher Education, the National Association of Schools and Colleges of The United Methodist Church, Campus Compact, and the Council of Independent Colleges

Organizational Chart Fall 2016-17

West Virginia Wesleyan College
Organizational Chart
2016-2017
(As of September 2016)



West Virginia Wesleyan College Administrative Executive Officers 2016-2017

Administrative Executive Officers

Pamela M. Balch, Ed.D., President of the College

Boyd H. Creasman, Ph.D., Vice President for Academic Affairs and Dean of the College

John Waltz, M.A., Vice President for Enrollment Management

Barry R. Pritts, Ph.D., Vice President for Administration and Finance

Robert N. Skinner, M.A., Vice President of Advancement

John Waltz, M.A., Interim Vice President for Student Development

Staff Council Officers 2016-17

Jonathan Andrew

Kimberly Haney

Matt Linder

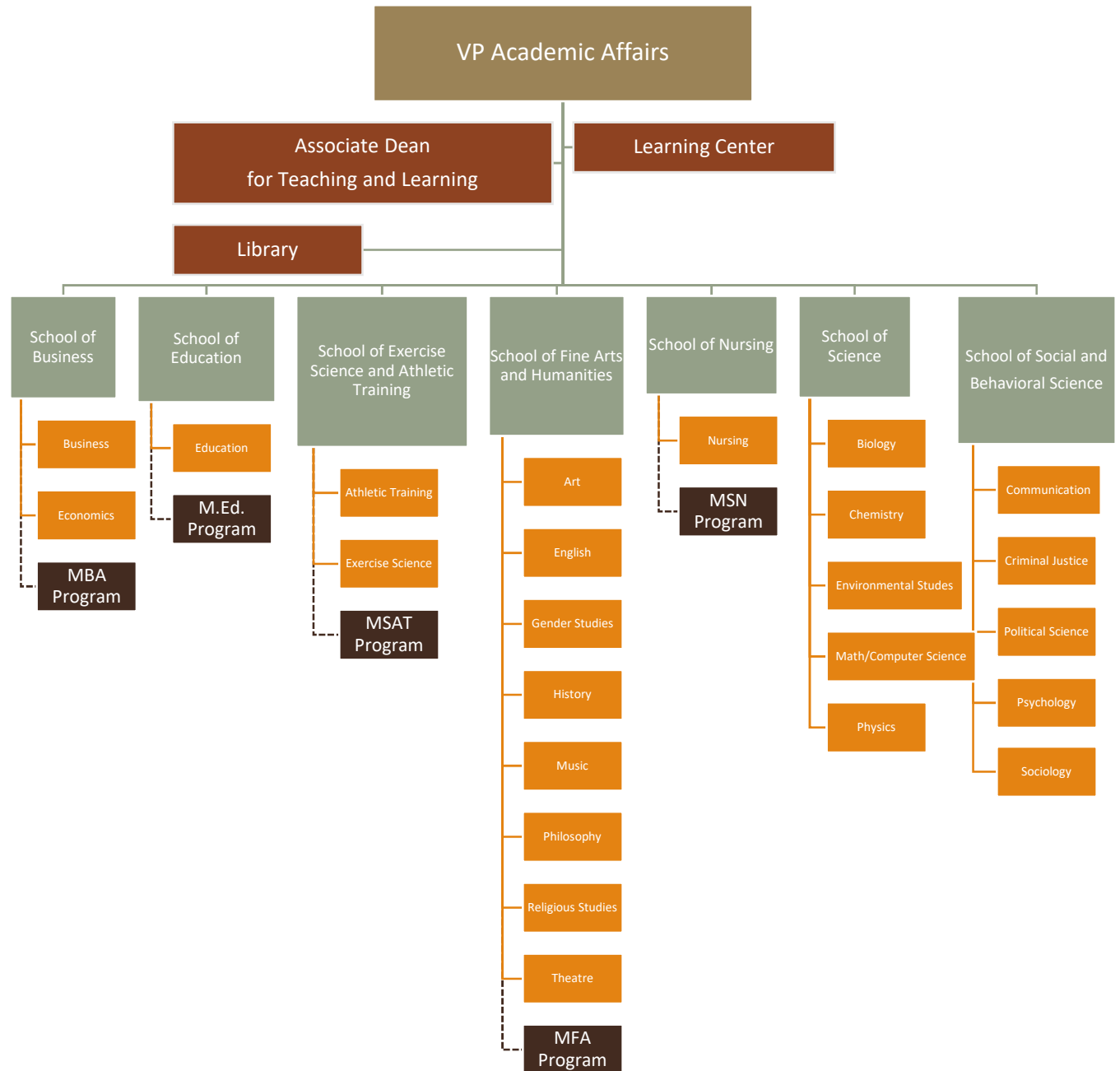
Alisa Lively (chair)

Katie Loudin (chair elect)

Denise Mills

Alice Teets

West Virginia Wesleyan College Academic Structure 2016-17



Academic School Directors

Susan L. Aloï, Ed.D., School of Business

Karen R. Petitto, Ed.D., School of Education

Stephen Cresswell, Ph.D., School of Fine Arts and Humanities

Rae Emrick., MSAT School of Exercise Science

Susan Leight Ph.D., School of Nursing

Pamel Wovchko, Ph.D., School of Science

Karen S. Miller, Ph.D., School of Social and Behavioral Science

Faculty Senate 2016-17

Executive Committee of Faculty Assembly

Shirley Fortney, Chair of the Faculty

Greg Bradley Popovich, Vice Chair of the Faculty

Melissa Buice

Ashley Lawson

Greg Mach

Paula McGrew

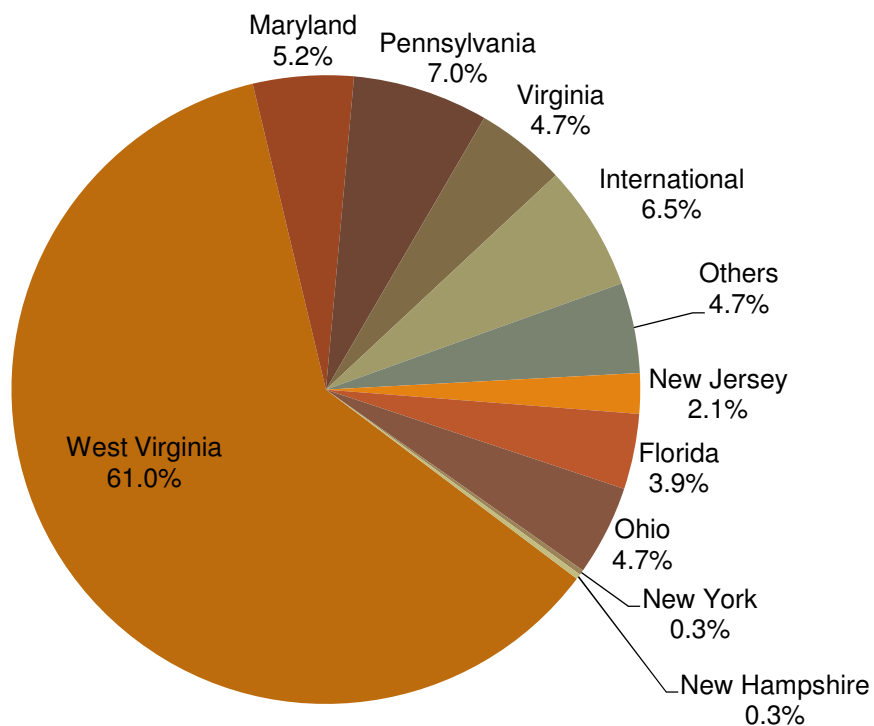
Fall 2016 New Students



Fall 2012-2016 Full-Time Freshmen Enrollment Funnel and Academic Profile

	Fall 2012	Fall 2013	Fall 2014	Fall 2015	Fall 2016
Applicants	2008	1762	1788	1782	1752
Accepted	1557	1356	1377	1376	1347
Accept rate	77.5%	77.0%	77.0%	77.2%	76.9%
Matriculates	404	471	415	392	387
Yield	25.9%	34.7%	30.1%	28.5%	28.7%
High School GPA	3.37	3.47	3.49	3.48	3.53
ACT Composite Score	21.9	22.5	22.5	22.2	22.5
SAT Verbal Score	483	490	484	483	486
SAT Math Score	487	498	487	491	503
SAT Written Score	466	477	473	467	469
SAT Combined (M and V only)	970	989	971	974	982
SAT Combined All	1433	1463	1444	1445	1457

**Fall 2016
387 Full-Time Freshmen
by State**



Fall 2012-2016 Full-Time Freshmen Demographics

	Fall 2012	Fall 2013	Fall 2014	Fall 2015	Fall 2016
Home State					
West Virginia	210	273	254	212	236
Maryland	46	51	40	57	20
Pennsylvania	40	34	39	42	27
Virginia	17	24	22	19	18
International	7	21	11	20	25
Others	23	37	19	18	18
New Jersey	7	6	8	10	8
Florida	20	12	11	8	15
Ohio	16	10	6	3	18
New York	13	1	2	3	1
New Hampshire	1	0	2	0	1
Massachusetts	0	0	1	0	0
Connecticut	3	1	0	0	0
Maine	1	1	0	0	0

Religious					
United Methodist	60	59	66	69	67
Roman Catholic	39	37	43	33	44
Baptist	41	52	44	34	53
Christian Missionary	0	0	0	0	0
Lutheran	0	3	2	6	5
Nazarene	3	1	4	1	2
Jewish	0	1	2	1	2
Presbyterian	6	10	7	10	7
Episcopal	3	2	3	3	3
United Church of Christ	3	6	7	4	7
Other	51	63	86	57	68
No Preference	206	237	151	174	129

Ethnic Classification					
	Fall 2012	Fall 2013	Fall 2014	Fall 2015	Fall 2016
White American	311	367	334	298	296
African American	64	48	39	45	30
Asian American	0	0	2	1	0
American Indian/Alaska Native	0	0	2	0	2
Spanish American(Hispanic)	8	10	9	12	14
Pacific Islander/Hawaiian	0	0	1	1	0
Not specified	7	4	2	4	0
International	7	21	10	20	27
More than one	7	21	16	11	18
Gender					
Female	210	228	245	215	213
Male	194	248	170	177	174

Academic Majors Upon Admission					
Business/Economics	51	56	33	58	62
Exercise Science/Athletic Training	49	58	50	41	42
Nursing	45	51	56	40	37
Biology/Environmental Science	52	59	45	42	35
Undecided/General Studies	54	56	51	42	30
Chemistry/Biochemistry	15	24	30	30	26
Engineering 3/2 , Physics, Geophysics	22	38	29	30	26
Criminal Justice/Sociology/Poli Sci	24	28	23	25	25
Education	30	32	33	25	24
Psychology	16	10	17	11	19
Music/Music Education	7	9	10	11	15
Art	9	10	8	8	12
English	5	4	7	4	9
Math/Computer Science	7	13	6	8	8
Communication Public Relations	5	8	5	6	8
History and International Studies	6	4	6	2	3
Health Science					3
Theatre and Music Theatre and Arts Admin.	6	10	5	7	2
Christian Education/Religious Studies/Philosophy	1	1	0	2	1
Gender Studies			1	0	0

Source: WVWC Admission Records as of the Census date

First-time Full-time Freshmen Financial Aid Profile

Undergraduate Cost of Attendance and Direct Cost					
	2012-13	2013-14	2014-15	2015-16	2016-17
WVWC Tuition and Fees	\$25,804	\$26,794	\$27,858	\$28,792	\$29,752
WVWC Room and Board	\$7,510	\$7,740	\$7,890	\$8,066	\$8,248
WVWC Direct Cost	\$33,314	\$34,534	\$35,748	\$36,858	\$38,000
WVWC Indirect Cost(Book, Supplies, Travel)	\$6,000	\$6,000	\$6,000	\$6,065	\$6,065
Total Cost of Attendance	\$39,314	\$40,534	\$41,748	\$42,923	\$44,065
Awarded Financial Aid to First Time Full-Time Freshmen					
	Fall 2012	Fall 2013	Fall 2014	Fall 2015	Fall 2016
Number First-time Full-time Freshmen	404	471	415	392	387
% Completing FAFSA	96%	93%	91%	94%	90%
% applied for Need or Merit Financial Aid	100%	99%	99%	99%	100%
% received any Financial Aid	100%	99%	99%	99%	100%
% received scholarship or grant aid	100%	99%	99%	99%	100%
% received self-help aid	76%	89%	75%	70%	75%
Average Financial Aid Award All Sources*	\$25,490	\$27,273	\$28,247	\$30,416	\$30,145
Average Scholarship and Grant Award All Sources	\$20,494	\$22,367	\$22,905	\$23,829	\$25,619
Average Self Help Award All Sources	\$4,996	\$4,738	\$5,343	\$4,633	\$5,289
% received Alternative Loans	9%	3%	6%	5%	7%
% received Parent Plus Loans	11%	8%	11%	16%	11%
Median Estimated Family Contribution	\$7,321	\$8,371	\$7,356	\$10,541	\$9,274
% Pell Eligible	40%	37%	70%	34%	34%
First Time Full-Time Freshmen Net Cost of Attendance and Out of Pocket Direct Cost					
	2012-13	2013-14	2014-15	2015-16	2016-17
Net Cost of Attendance <i>(Total Cost of Attendance -Ave. Scholarships and Grants)</i>	\$18,820	\$18,167	\$18,843	\$19,029	\$18,446
Out of Pocket Direct Cost <i>(Total Direct Cost -Average Financial Aid Award All Source)</i>	\$7,824	\$7,261	\$7,501	\$6,442	\$7,845

Source: Financial Aid Files as of no later than November 15th each year.

*Does not Include Parent Loans

Fall 2016 Student Body



Historical Enrollment Summary

UNDERGRADUATE STUDENT ENROLLMENT

NEW FULL TIME STUDENTS	2012-2013		2013-2014		2014-2015		2015-2016		2016-2017	
	Fall	Spring	Fall	Spring	Fall	Spring	Fall	Spring	Fall	Spring
Fall First Year	404	347	471	415	415	374	392	341	387	339
Spring First Year		8		5		2		3		5
Fall Transfers	61	41	39	34	40	35	49	46	42	32
Spring Transfers		13		10		16		6		11
Fall Visitors	2	2	5	4	4	3	6	4	4	0
Spring Visitors	2	3	2	1	0	1		2	1	0
Total	469	414	517	469	459	431	447	402	434	387
RETURNING FULL TIME STUDENTS										
Continuing Students	809	753	816	758	891	835	910	832	918	843
Fall readmits	11		12		7		6		15	
Spring Readmits		14		6		2		8		8
Total	820	767	828	764	898	837	916	840	933	851
TOTAL UNDERGRADUATE										
Full-time	1289	1181	1345	1233	1357	1268	1363	1242	1367	1238
Part-time	26	27	22	30	33	35	26	38	29	38
Total Headcount	1315	1208	1367	1263	1390	1303	1389	1280	1396	1276
Undergraduate FTE	1302	1195	1356	1246	1372	1284	1373.3	1257.6	1379.6	1255.4
Average Undergraduate FTE	1248		1301		1328		1315		1318	

GRADUATE STUDENT ENROLLMENT										
MASTER OF BUSINESS ADMINISTRATION	2012-2013		2013-2014		2014-2015		2015-2016		2016-2017	
	Fall	Spring	Fall	Spring	Fall	Spring	Fall	Spring	Fall	Spring
Full-time	14	14	23	23	15	12	9	7	18	17
Part-time	6	1	4	1	1	0	1	1	1	1
Total Headcount	20	15	27	24	16	12	10	8	19	18
FTE	17	15	25	24	15	12	9.5	7.5	19.5	17.5
<i>Five Year MBA Program (not included in above MBA figures)#</i>	23	20	19	23	14	13	10	24	24	25
MASTER'S IN EDUCATION										
Full-time	19	18	12	12	12	14	16	14	9	7
Part-time	7	12	5	6	5	9	4	2	3	2
Total Headcount	26	30	17	18	17	23	20	16	12	9
FTE	22.5	24.0	14.5	14.3	14.833	17.5	18.2	15.1	13.7	8.0
<i>Five YEAR MED (not included in above MED figures)</i>	11	12	8	6	8	13	12	13	14	14
MASTER OF SCIENCE in ATHLETIC TRAINING										
Full-time	9	9	10	10	12	11	12	11	10	9
Part-time	1	0	0	0	0	1	0	1	0	0
Total Headcount	10	9	10	10	12	12	12	12	10	9
FTE	9.17	9	10	10	12	11.83	12	11.5	10	9
Masters of Science in Nursing										
Full-time	10	8	24	28	44	51	67	53	79	47
Part-time	1	4	5	9	10	6	9	7	8	8
Total Headcount	11	12	29	37	54	57	76	60	87	55
FTE	10.5	10	26.5	32.5	49.5	54	72.2	56.88	83.7	51
Masters in Fine Arts-Creative Writing										
Full-time	12	21	19	21	22	19	11	14	18	18
Part-time	0	0		0		0	0	0	0	0
Total Headcount	12	21	19	22	22	19	11	14	18	18
FTE	12	21	19	22	22	19	11	14	18	18
TOTAL MASTERS LEVEL GRADUATE STUDENTS										
Full-time Enrollment	64	70	88	94	105	107	115	99	134	98
Part-time Enrollment	15	17	14	16	16	16	14	11	12	11
Total Headcount	79	87	102	111	121	123	129	110	146	109
FTE	71	79	95	102	113	114	122.8	105	144.8	104
Average Graduate FTE	75		99		114		114		124	

TOTAL STUDENT BODY ENROLLMENT SUMMARY										
	2012-2013		2013-2014		2014-2015		2015-2016		2016-2017	
	Fall	Spring	Fall	Spring	Fall	Fall	Spring	Fall	Spring	Fall
Total Student Body Full-time Enrollment	1353	1251	1433	1327	1462	1375	1478	1341	1501	1336
Total Student Body Part-time Enrollment	41	44	36	46	49	51	40	49	41	49
Total Student Body Headcount Enrollment	1394	1295	1469	1374	1511	1426	1518	1390	1542	1385
Total Student Body Semester FTE	1373	1273	1451	1349	1485	1399	1496.1	1363	1524.4	1359
Total Student Body Average FTE	1323		1400		1442		1429		1442	

*** The 5 year MBA program students are officially counted in the undergraduate headcount and FTE numbers but are also enrolled in one or more masters level courses.

**** The MED PROGRAM was reestablished in Fall 2007. The 5 year MED program students are officially counted in the undergraduate headcount and FTE numbers but are also enrolled in one or more masters level courses.

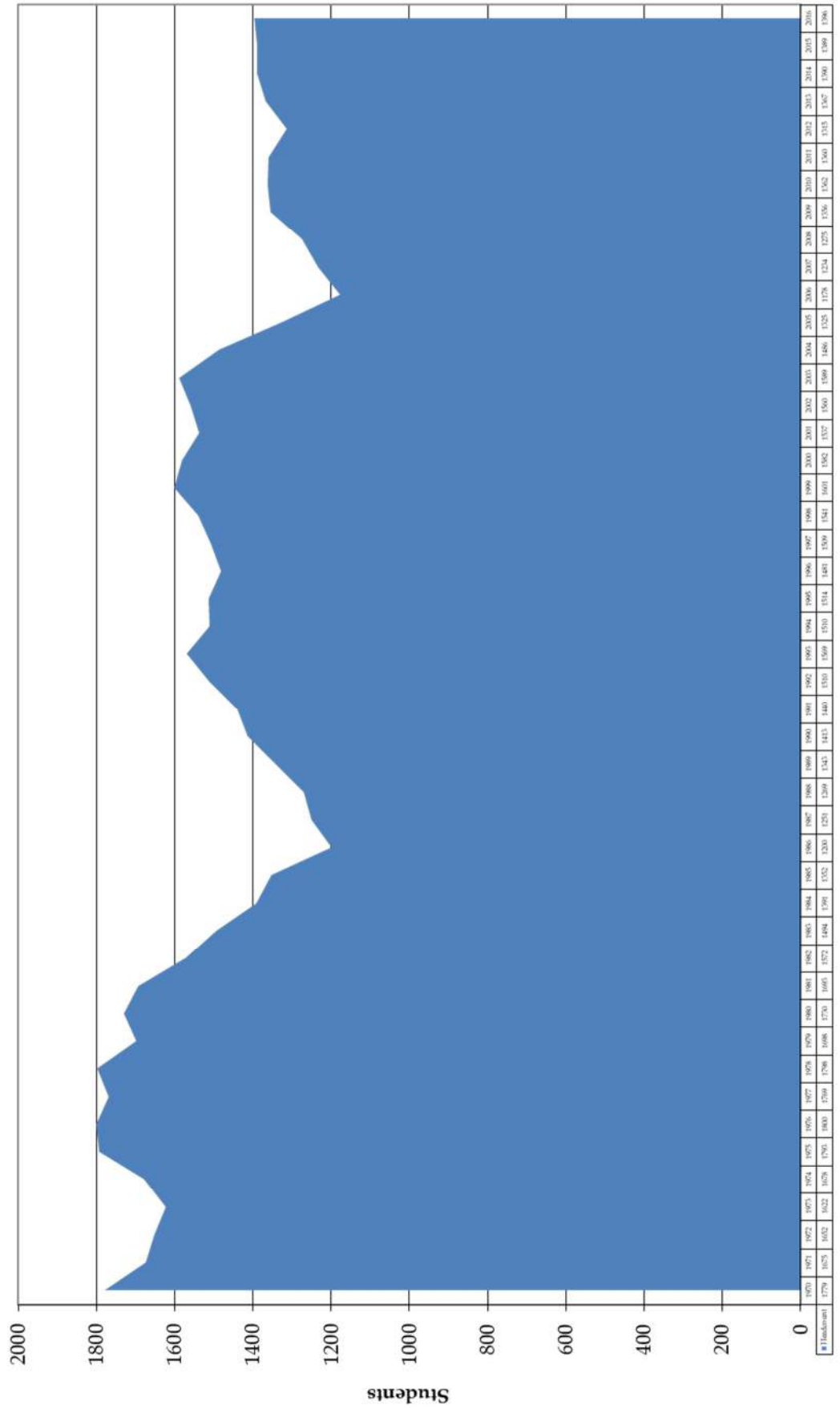
The MS AT Program had its first enrollment in Fall 2008.

The MSN Program had its first enrollment in Fall 2009.

The MFA in Creative Writing had its first enrollment in July 2011.

Source: WVWC Student Records as of the Census date

West Virginia Wesleyan College Undergraduate Student Headcount Fall 1970 to Fall 2016



Fall 2016 All Students by Gender, Race and Ethnicity

Undergraduates												
		International	Black non-Hispanic	Am. Indian or Alaskan Native	Asian	Pacific Islander/Haw	Hispanic	White, non-Hispanic	Race/eth. unknown	More than one	Total	Gender Percentage
Full Time Undergraduates												
	Men	57	79	3	0	2	21	430	5	21	618	45.2%
	Women	28	28	2	2	0	13	640	6	30	749	54.8%
	Full-time Total	85	107	5	2	2	34	1070	11	51	1367	
	Ethnic Percentages	6.2%	7.8%	0.4%	0.1%	0.1%	2.5%	78.3%	0.8%	3.7%		
Part Time Undergraduates												
	Men	1					1	9	2		13	44.8%
	Women	1						15			16	55.2%
	Part-time Total	2	0	0	0	0	1	24	2	0	29	
Total Undergraduates												
	Men	58	79	3	0	2	22	439	7	21	631	45.2%
	Women	29	28	2	2	0	13	655	6	30	765	54.8%
	Total	87	107	5	2	2	35	1094	13	51	1396	
	Ethnic Percentages	6.2%	7.7%	0.4%	0.1%	0.1%	2.5%	78.4%	0.9%	3.7%		
Graduate Students												
Full Time Graduate Students												
	Men	1	1		1	1		22	1	1	28	24.3%
	Women		1		2		1	72	10	1	87	75.7%
Part-time Graduate Students												
	Men				1						1	7.1%
	Women		1					10	2		13	92.9%
Total Graduate Students												
	Men	1	1	0	2	1	0	22	1	1	29	22.5%
	Women	0	2	0	2	0	1	82	12	1	100	77.5%
	Total	1	3	0	4	1	1	104	13	2	129	
	Ethnic Percentages	0.8%	2.3%	0.0%	3.1%	0.8%	0.8%	80.6%	10.1%	1.6%		
Grand Total Students												
	Men	4	3	0	0	0	0	23	4	3	37	25.3%
	Women	1	4	0	0	0	0	92	12	0	109	74.7%
	Total	5	7	0	0	0	0	115	16	3	146	
	Ethnic Percentages	3.4%	4.8%	0.0%	0.0%	0.0%	0.0%	78.8%	11.0%	2.1%		

STATES AND COUNTRIES

West Virginia Wesleyan College has a commitment to providing a diverse environment for student to both learn in and live in. Sixty percent of Wesleyan's student body are from WV. Thirty-four percent of the student body consists of students from 34 other states and six percent are international students from the 27 countries.

Source: WVWC Student Records as of the Census date

Ten Year Full-time Undergraduate Ethnic and Gender and Basic Geographic Breakdown Summary

% Fall Full-time Undergraduates Ethnic Summary

	2007	2008	2009	2010	2011	2012	2013	2014	2015	2016
Minority*	5.0%	4.8%	12.4%	13.2%	14.6%	15.8%	13.5%	14.1%	15.4%	14.7%
International**	3.3%	3.2%	4.1%	4.2%	5.5%	4.8%	5.3%	5.0%	5.3%	6.2%
White/Non-Hispanic	62.9%	60.3%	82.0%	81.4%	78.4%	78.2%	79.9%	79.9%	78.4%	78.3%
Unknown	27.7%	29.8%	1.5%	1.2%	1.5%	1.2%	1.3%	1.0%	1.0%	0.8%

* Minority students include: Black Non-Hispanic, Am. Indian or Alaskan, Asian or Pacific Islander and Hispanic

** International students include: students with the ethnic code of Nonresident Alien

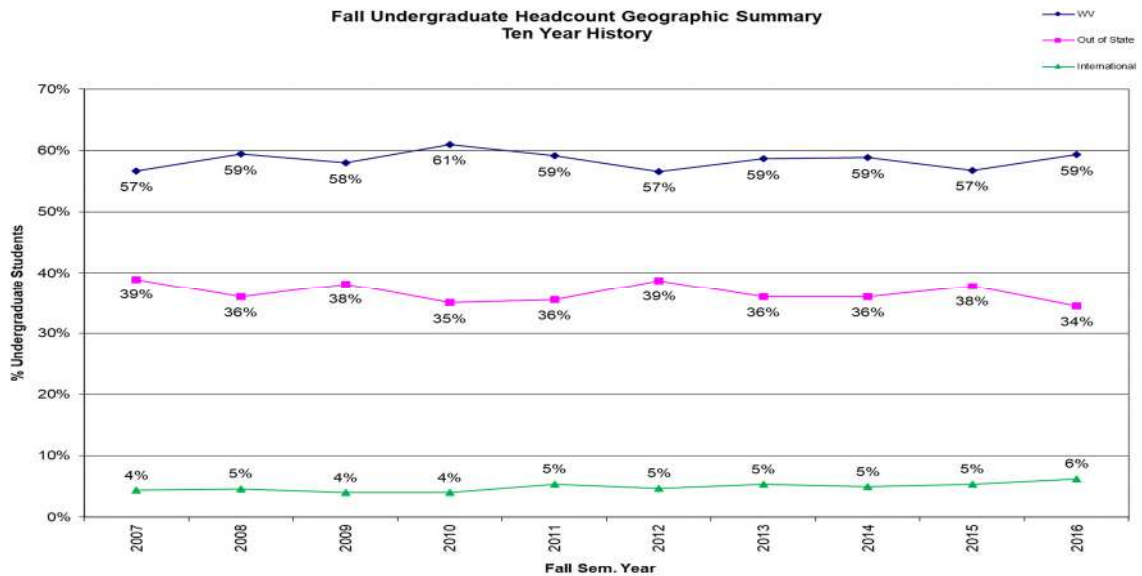
% Fall Full-time Undergraduates Gender Summary

	2007	2008	2009	2010	2011	2012	2013	2014	2015	2016
Male	46.2%	44.8%	45.6%	45.5%	46.7%	46.0%	46.7%	45.2%	45.3%	45.2%
Female	53.8%	55.2%	54.4%	54.5%	53.3%	54.0%	53.3%	54.8%	54.7%	54.8%

% Fall Undergraduates Geographic Summary

	2007	2008	2009	2010	2011	2012	2013	2014	2015	2016
WV	57%	59%	58%	61%	59%	57%	59%	59%	57%	59%
Out of State	39%	36%	38%	35%	36%	39%	36%	36%	38%	35%
International	4%	5%	4%	4%	5%	5%	5%	5%	5%	6%
Undergrad Head Count	1,235	1,275	1,356	1,362	1,360	1,315	1,367	1,390	1,389	1,367

Source: WVWC Student Records as of the Census date

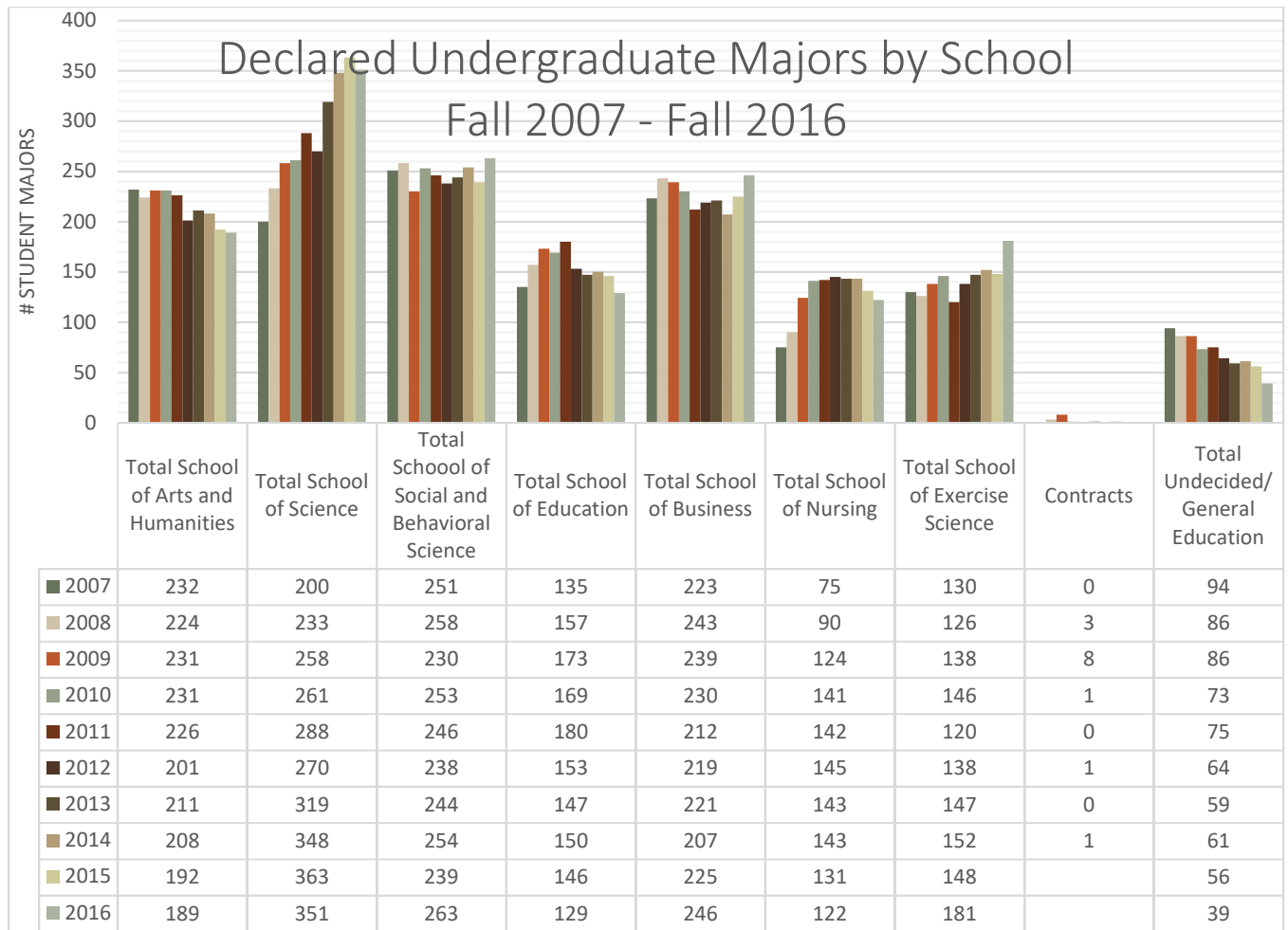


Declared Academic First and Second Majors by School- Fall 2016

		2016				Previous Most Recent 5 Years			
Major	Track	Majors	2nd Majors	Total Majors	% of Total	Majors	2nd Majors	Total Majors	% of Total
School of Fine Arts and Humanities									
Art Total		29	6	35	2.3%	196	26	222	3.0%
	Pre Art Therapy	3	2	5	0.3%	14	6	20	0.3%
	Education								
	Graphic Design	19		19	1.3%	114	0	114	1.5%
	Painting/Drawing	3		3	0.2%	19	2	21	0.3%
	Studio	3		3	0.2%	9	1	10	0.1%
	Ceramics			0	0.0%	0	0	0	0.0%
	Intermedia			0	0.0%	28	4	32	0.4%
	Photography								
Arts Administration		5		5	0.3%	29	3	32	0.4%
	AAArt	1		1	0.1%	8	1	9	0.1%
	AAMusic	2		2	0.1%	16	1	17	0.2%
	AATheatre	2		2	0.1%	5	1	6	0.1%
Christian Education		0	0	0	0.0%	29	4	33	0.4%
English Total		28	5	33	2.2%	169	58	227	3.1%
	English	10		10	0.7%	40	58	98	1.3%
	Education								
	Literature	4		4	0.3%	32	0	32	0.4%
	Writing	14		14	0.9%	97	0	97	1.3%
Gender Studies			5	5	0.3%	3	20	23	0.3%
History		23	5	28	1.8%	102	47	149	2.0%
International Studies		5	3	8	0.5%	42	14	56	0.8%
Music: Total		41	1	42	2.8%	147	21	168	2.3%
	Music	18	1	19	1.3%	52	16	68	0.9%
	Education	23		23	1.5%	95	5	100	1.4%
Philosophy		6	6	12	0.8%	10	22	32	0.4%
Philosophy and Religion				0	0.0%	2	0	2	0.0%
Religion/Religious Studies		7	1	8	0.5%	14	8	22	0.3%
Theatre Arts: Total		12	1	13	0.9%	116	18	134	1.8%
	Musical Theatre	7	1	8	0.5%	56	9	65	0.9%
	Theatre Arts	4		4	0.3%	60	9	69	0.9%
	Pre Drama Therapy	1		1					
	Dramatic Arts			0	0.0%	0	0	0	0.0%
Total School of Arts and Humanities		156	33	189	12.4%	859	241	1100	14.9%

		2016				Previous Most Recent 5 Years			
Major	Track	Majors	2nd Majors	Total Majors	% of Total	Majors	2nd Majors	Total Majors	% of Total
School of Science									
Biology		91	1	92	6.1%	489	17	506	6.8%
Chemistry		26	4	30	2.0%	257	32	289	3.9%
Chemical Hygiene				0	0.0%				
Biochemistry		56	3	59	3.9%				
Computer Info. Science		7		7	0.5%	24	7	31	0.4%
Computer Science		25	3	28	1.8%	75	5	80	1.1%
Environmental Studies		15		15	1.0%	63	10	73	1.0%
Mathematics		8	9	17	1.1%	35	34	69	0.9%
Pharmacy		4		4	0.3%				
Physics Major/Engineering 3/2 program		25		25	1.6%	190	1	191	2.6%
Physics		61	3	64	4.2%	132	4	136	1.8%
Geophysics		10		10	0.7%				
Total School of Science		328	23	351	23.1%	1286	110	1396	18.9%
School of Social Science									
Communication Studies		37	6	43	2.8%	201	17	218	2.9%
	Communication	16	4	20	1.3%	116	11	127	1.7%
	Public Relations	10	2	12	0.8%	81	6	87	1.2%
	Media Studies	11		11	0.7%	4	0	4	0.1%
Criminal Justice		57	12	69	4.5%	324	18	342	4.6%
Health Science		14	1	15	1.0%				
Political Science		38	4	42	2.8%	126	27	153	2.1%
Psychology		66	11	77	5.1%	382	59	441	6.0%
Social Science									
Sociology		7	4	11	0.7%	39	18	57	0.8%
Social Justice		5	1	6	0.4%				
Total School of Social Science		224	39	263	17.3%	1072	139	1211	16.4%

		2016				Previous Most Recent 5 Years			
		Majors	2nd Majors	Total Majors	% of Total	Majors	2nd Majors	Total Majors	% of Total
Major	Track								
School of Business									
Business Total		208	10	218	14.3%	938	40	978	13.2%
	Accounting	43	1	44	2.9%	268	7	275	3.7%
	Finance			0	0.0%	0	0	0	0.0%
	Business Admin	67	4	71	4.7%	379	22	401	5.4%
	Management	28	2	30	2.0%	111	5	116	1.6%
	Marketing	30	2	32	2.1%	100	3	103	1.4%
	International Business		1	1	0.1%	80	3	83	1.1%
	Sport Business	40		40	2.6%				
Economics		20	8	28	1.8%	44	50	94	1.3%
Total School of Business		228	18	246	16.2%	1030	91	1121	15.1%
School of Education									
	Elementary	80	1	81	5.3%	419	7	426	5.8%
	Secondary	44	4	48	3.2%	378	18	396	5.3%
Total School of Education		124	5	129	8.5%	797	25	822	11.1%
School of Exercise Science									
	Physical Education	2	4	6	0.4%	9	22	31	0.4%
	Exercise Science	124	1	125	8.2%	393	9	402	5.4%
	Athletic Training	49	1	50	3.3%	259	0	259	3.5%
Exercise Science		175	6	181	11.9%	661	31	692	9.3%
School of Nursing		122	0	122	8.0%	691	4	695	9.4%
	Nursing	79		79					
	Pre-Nursing	43		43					
Total School of Health Sciences		297	6	303	19.9%	1352	35	1387	18.7%
Contract Major				0	0.0%	7	3	10	0.1%
Undeclared		39		39	2.6%	357	0	357	4.8%
Total Undergraduate Declared Majors		1396	124	1520	100.0%	6760	644	7404	100.0%



Source: WVWC Student Records as of the Census date

West Virginia Wesleyan College

Student Organizations

(In Alphabetical Order)

Alpha Delta Pi Sorority	Hallom Math Honorary	Religious Life Council
Alpha Gamma Delta Sorority	Honors Program	Senior Class Council
Alpha Lambda Delta Honorary	Interfraternity Council (IFC)	Sigma Alpha Iota
Alpha Phi Alpha	International Student Organization	Sigma Tau Delta
Alpha Phi Omega	Interfaith	Sigma Theta Epsilon
Alpha Psi Omega	Jazz Ensemble	Sigma Theta Tau
Alpha Sigma Phi	Junior Class Council	Student Nurses of Wesleyan (SNOW)
Alpha Xi Delta Sorority	Just Stand	Sociology Club
Beta Beta Beta	Kappa Delta Pi	Sophomore Class Council
Black Student Union	Kappa Alpha Order	Student Art League
Bobcat Entertainment	Lambda Pi Eta Communication Honorary	Student Athlete Advisory Committee
Catholic Campus Ministry	Love Your Melon	Student Athletic Trainers' Club
Cheerleading	Omega Psi Phi Fraternity	Student Education Association
Chi Phi Fraternity	Omicron Delta Epsilon	Student Senate
College Republicans	Omicron Delta Kappa	Theta Chi Fraternity
Collegiate 4-H Club	Order of Omega	Theta Xi Fraternity
Concentus Vocum	Panhellenic Association	WE LEAD
Concert Band	Pharos	Wesleyan Ambassadors
Concert Chorale	Phi Kappa Phi	Wesleyan Singers
Delta Mu Delta	Phi Mu Alpha Sinfonia	WVWC-C92FM
ENACTUS	Phi Sigma Tau	Young Democrats
Engineering/Physics Club	Pre-Law Society	Zeta Tau Alpha
Fellowship of Christian Athletes	Pre-Med Society	
Freshman Council	PRISM	
Gamma Sigma Alpha	Psi Chi	

Source: WVWC Web page 05-2016

All Student Athletes by Scholarship Status

	All Student Fall 2016			
Sports	Number of Student Athletes	Scholarship Student Athletes	Walk on Student Athletes	% Scholarship
Baseball	58	27	31	47%
M. Basketball	20	8	12	40%
M. Cross Country and Track*	72	34	38	47%
Football#	117	54	63	46%
Golf	13	6	7	46%
M. Soccer#	40	19	21	48%
M. Swimming	15	7	8	47%
M. Tennis	21	9	12	43%
Totals	356	164	192	46%
% of FT Undergraduate Men	57.6%	26.5%	31.1%	
FT Undergraduate Men	618			

2 Graduate FB, 1 Graduate MSR

Women's Programs				
W. Basketball	21	16	5	76%
W. Cross Country and Track*	63	26	37	41%
W. Lacrosse	23	13	10	57%
W. Soccer	48	31	17	65%
Softball	34	12	22	35%
W. Swimming	21	10	11	48%
W. Tennis	10	8	2	80%
Volleyball	29	21	8	72%
W. Golf#	7	4	3	57%
Totals	256	141	115	55%
% FT Undergraduate Women	34.2%	18.8%	15.4%	
# of FT Undergraduate Women	749			
All Student Athlete Totals	612	305	307	50%
% of Total Students	45%	22%	22%	
# Total FT Students	1367			

* This number does not include those athletes who also participated in another sport during the year.

1 Graduate WGOLF

Source: WVWC Student Records as of the census date each year

Student Outcomes



Institutional Yearly Retention Rates

First-Time Full-time Freshmen Rate

Fall to Fall Year of Retention*	Fall 06 to Fall 07	Fall 07 to Fall 08	Fall 08 to Fall 09	Fall 09 to Fall 10	Fall 10 to Fall 11	Fall 11 to Fall 12	Fall 12 to Fall 13	Fall 13 to Fall 14	Fall 14 to Fall 15	Fall 15 to Fall 16	Fall 2016 Projection	Previous 3 yr. Ave.	Strategic Planning Long Term Goal
Freshmen Cohort for First Year Retention	291	401	382	399	371	405	404	471	415	392			
Freshmen to Sophomore (Year 1)	75.3%	73.8%	74.6%	69.9%	67.3%	64.0%	65.1%	73.0%	71.8%	70.4%	71.5%	70.2%	75%
Sophomore to Junior (Year 2)	88.3%	83.03%	87.5%	82.8%	80.0%	82.2%	87.3%	88.6%	82.3%	87.3%	85.2%	85.8%	85%
Junior to Senior (Year 3)	95.4%	91.6%	96.1%	94.2%	96.6%	91.9%	92.4%	90.2%	88.9%**	92.2%**	92.0%	90.6%	95%

* These numbers only reflect retention for students who originally entered WVWC as First-time Full-time Freshmen

** If 2 2015-16 Graduates are included in the rate the Junior to Senior retention/completion rate is 92.9%

Transfer Student Retention Rates

Fall to Fall Year of Retention*	Fall 06 to Fall 07	Fall 07 to Fall 08	Fall 08 to Fall 09	Fall 09 to Fall 10	Fall 10 to Fall 11	Fall 11 to Fall 12	Fall 12 to Fall 13	Fall 13 to Fall 14	Fall 14 to Fall 15	Fall 15 to Fall 16	Previous 3 yr. Ave.
Transfer Entering Cohort	39	55	42	60	32	60	61	39	40	49	
(Year 1)	77.5%	70.9%	87.2%	80.0%	78.1%	60.0%	54.1%	74.4%	81.5%	77.6%	67.1%
(Year 2)	42.1%	67.7%	59.0%	67.6%	64.6%	60.0%	77.8%	54.5%	79.3%	75.0%	69.4%
(Year 3)	69.2%	37.5%	38.1%	30.4%	39.1%	38.7%	15.4%	21.4%	5.8%	30.4%	15.5%

* These numbers only reflect retention for students who originally entered WVWC as Transfer Students. Student who have readmitted to the institution are included in their original cohort for retention purposes.

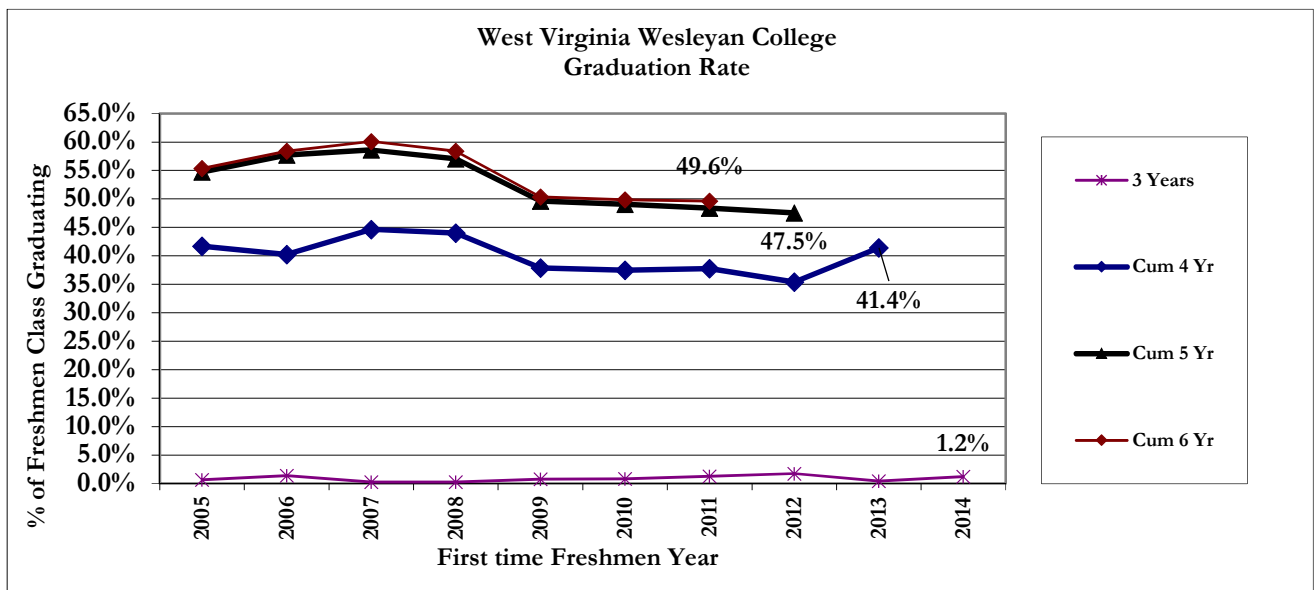
** If 2015-16 Graduates and are included in the rates, retention/completion rate is first year 79.6%, second year 87.5%, third year 78.3%

Actual Data is as of Census Date each year

West Virginia Wesleyan College
First Time Full Time Freshmen
Yearly Retention and Graduation Rates
2005 to Present

First-Time Full-time Freshmen and Year Entering College		Returning for:								Graduating in:					Total	Total Grads %
		Year 2	%	Year 3	%	Year 4	%	Year 5	Year 6	≤ 3 yrs	4 yrs	5 yrs	> 5			
2005	307	215	70.0%	190	61.9%	169	55.0%	42	2	2	126	40	2	170	55.4%	
2006	291	219	75.3%	181	62.2%	174	59.8%	51	0	4	113	51	2	170	58.4%	
2007	401	296	73.8%	259	64.6%	244	60.8%	53	7	1	178	56	6	241	60.1%	
2008	382	285	74.6%	236	61.8%	228	59.7%	46	4	1	167	50	5	223	58.4%	
2009	399	279	69.9%	223	55.9%	206	51.6%	51	2	3	148	47	3	201	50.4%	
2010	371	250	67.4%	211	56.9%	196	52.8%	41	5	3	136	43	3	185	49.9%	
2011	405	259	64.0%	225	55.6%	206	50.9%	36	7	5	148	43	5	201	49.6%	
2012	404	263	65.1%	234	57.9%	209	51.7%	50		7	136	49				
2013	471	344	73.0%	283	60.1%	261	55.4%			2	193					
2014	415	298	71.8%	261	62.9%					5						
2015	392	276	70.4%													
2016	387															
Recent 3 Yr Average	398	306	71.8%	259	60.3%	225	52.8%	42	5	5	159	45	4	196	50.0%	

Graduation Rates						
2005	0.7%	41.7%	13.0%	54.7%	0.7%	55.4%
2006	1.4%	40.2%	17.5%	57.7%	0.7%	58.4%
2007	0.2%	44.6%	14.0%	58.6%	1.5%	60.1%
2008	0.3%	44.0%	13.1%	57.1%	1.3%	58.4%
2009	0.8%	37.8%	11.8%	49.6%	0.8%	50.4%
2010	0.8%	37.5%	11.6%	49.1%	0.8%	49.9%
2011	1.2%	37.8%	10.6%	48.4%	1.2%	49.6%
2012	1.7%	35.4%	12.1%	47.5%		
2013	0.4%	41.4%				
2014	1.2%					
Recent 3 Yr Average	1.1%	38.4%	11.4%	48.3%	0.9%	50.0%



Source: WVWC Student records as of the census date each year

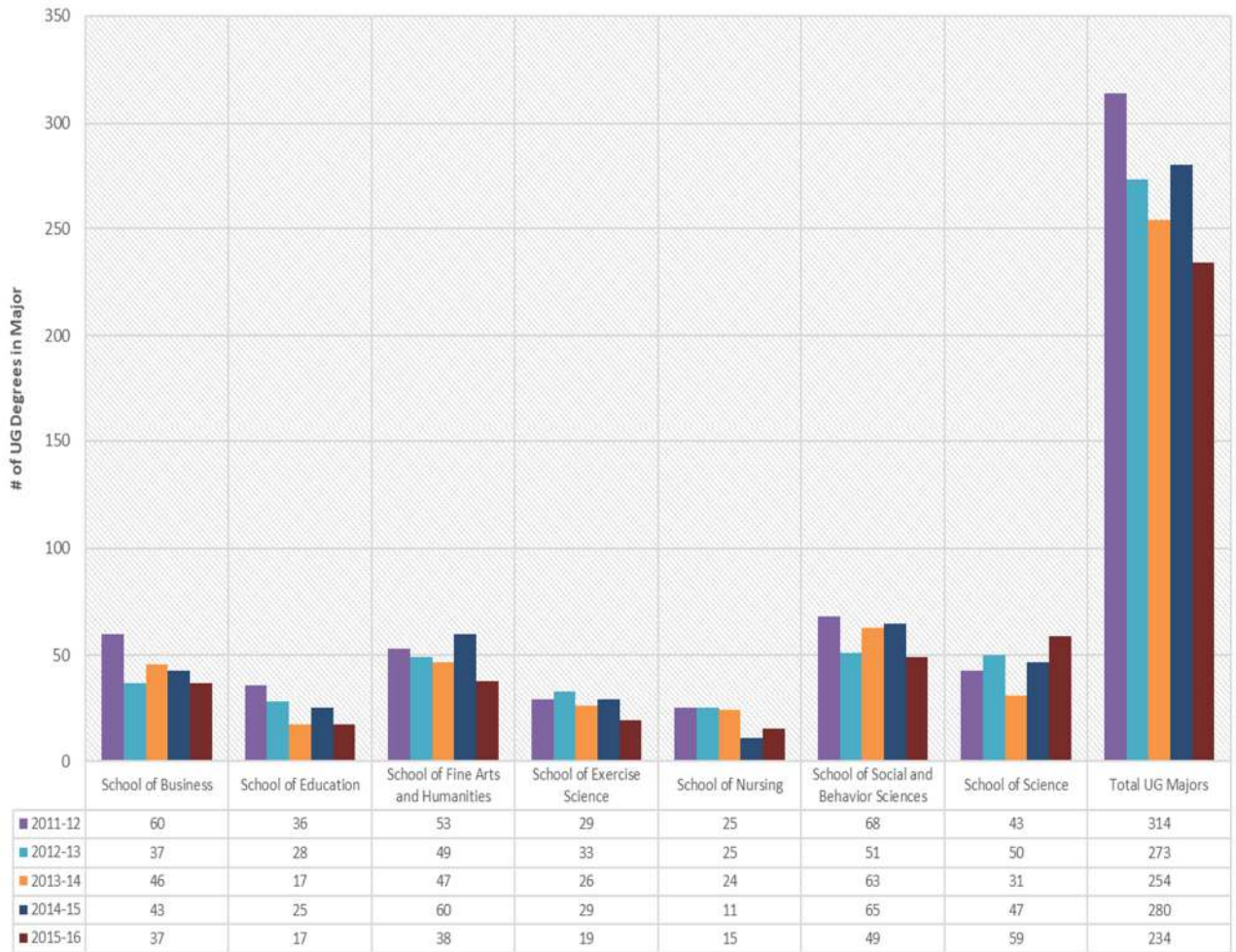
Degrees Awarded by Major Field of Study

		2016				Previous 5 year Total			
		July 1, 2015 through June 30, 2016				July 1, 2011 through June 30, 2015			
Major	Division	Majors	2nd or 3rd Majors	Total Majors	%of All	Majors	2nd or 3rd Majors	Total Majors	%of All
Fine Arts and Humanities									
Art Total		9	1	10	4.3%	46	5	51	3.6%
	Education			0	0.0%	0	0	0	
	Graphic Design	4		4	1.7%	26	0	26	
	Painting/Drawing	2		2	0.9%	10	0	10	
	Studio			0	0.0%	0	0	0	
	Ceramics			0	0.0%	0	0	0	
	Intermedia	1		1	0.4%	2	0	2	
	Photography	1				3	0	0	
	Pre Art Therapy	1		1	0.4%	5	2	7	
Art Administration		1		1	0.4%	10	1	11	0.8%
Theatre Arts				0	0.0%	10	3	13	0.9%
English: Total		6	1	7	3.0%	50	15	65	4.6%
	Education			0	0.0%		0	0	
	Literature	3		3	1.3%	14	0	14	
	Writing	3		3	1.3%	36	0	36	
Gender Studies			3	3	1.3%	4	10	14	1.0%
History		4	2	6	2.6%	37	8	45	3.2%
Music: Total		5		5	2.1%	24	3	27	1.9%
	Music:	2		2	0.9%	12	3	15	
	Education	3		3	1.3%	12	0	12	
Music Theatre		1		1	0.4%	6	1	7	0.5%
Philosophy		1	1	2	0.9%	3	7	10	0.7%
Philosophy and Religion		0		0	0.0%	0	0	0	0.0%
Religion/Religious Studies		2		2	0.9%	6	1	7	0.5%
International Studies		1		1	0.4%	8	3	11	0.8%
Christian Education		0		0	0.0%	6	0	6	0.4%
Total Arts and Humanities		30	8	38	16.2%	210	57	267	18.7%

		2016				Previous 5 year Total			
		July 1, 2015 through June 30, 2016				July 1, 2011 through June 30, 2015			
Major	Division	Majors	2nd or 3rd Majors	Total Majors	%of All	Majors	2nd or 3rd Majors	Total Majors	%of All
School of Science									
Biology		16		16	6.8%	64	0	64	4.5%
Biochemistry		8		8	3.4%	2	0	2	0.1%
Chemistry		9		9	3.8%	55	2	57	4.0%
Material Chemistry		0		0	0.0%	1	0	1	0.1%
Computer Info. Science		2		2	0.9%	6	2	8	0.6%
Computer Science		4		4	1.7%	8	0	8	0.6%
Engineering Physics		0		0	0.0%	0	0	0	0.0%
Environmental Science/Studies		3		3	1.3%	11	1	12	0.8%
Mathematics		2		2	0.9%	12	5	17	1.2%
Pharmacy						0	0	0	0.0%
Physics		15		15	6.4%	47	0	47	3.3%
Geophysics						0	0	0	0.0%
Total Science		59	0	59	25.2%	206	10	216	15.1%
School of Social Science									
Communication Studies		5		5	2.1%	27	2	29	2.0%
Media Studies									
Public Relations		2		2	0.9%	28	0	28	2.0%
Criminal Justice		9	1	10	4.3%	69	4	73	5.1%
Health Science						0	0	0	0.0%
Political Science		5		5	2.1%	31	6	37	2.6%
Psychology		22	2	24	10.3%	110	7	117	8.2%
Sociology		3		3	1.3%	14	8	22	1.5%
Total Social Science		46	3	49	20.9%	279	27	306	21.4%
School of Education									
Education: Total		15	2	17	7.3%	118	8	126	8.8%
	Elementary	11		11	4.7%	75	1	76	5.3%
	Secondary	4	2	6	2.6%	43	7	50	3.5%

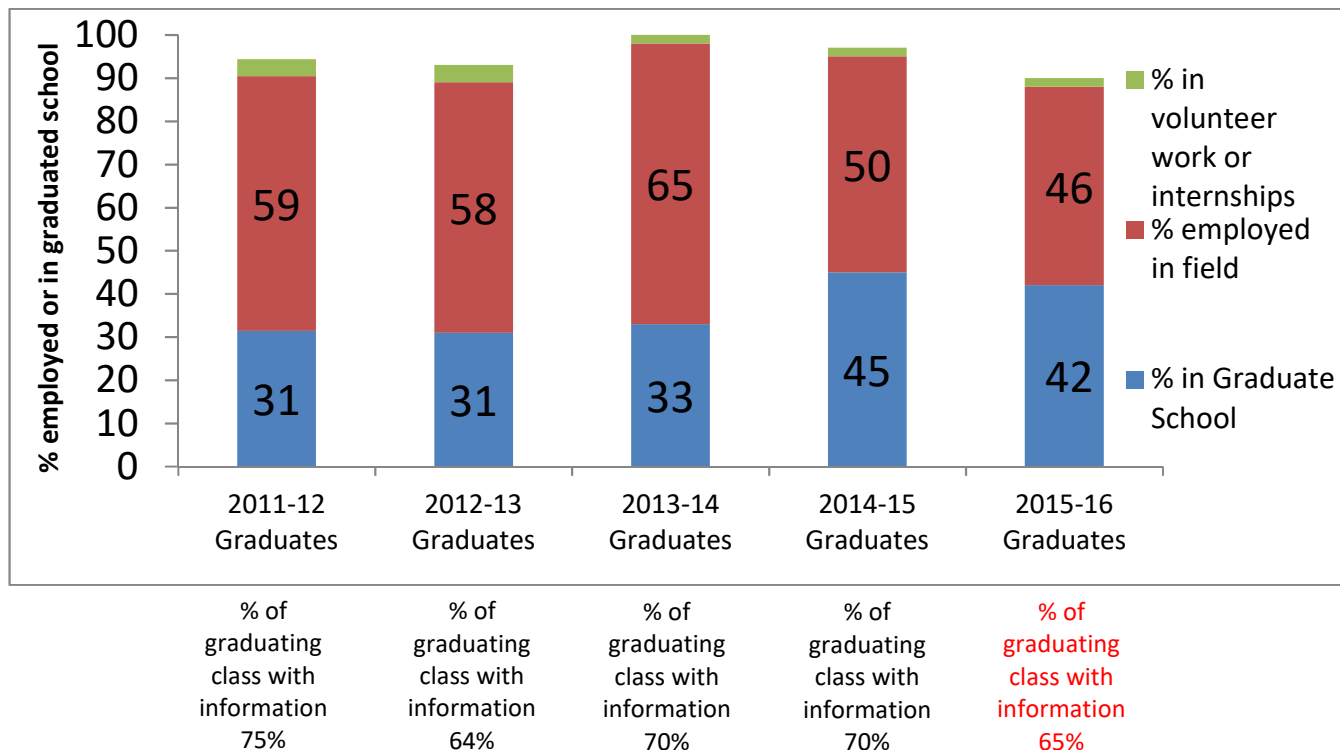
		2016				Previous 5 year Total			
		July 1, 2015 through June 30, 2016				July 1, 2011 through June 30, 2015			
Major	Division	Majors	2nd or 3rd Majors	Total Majors	%of All	Majors	2nd or 3rd Majors	Total Majors	%of All
School of Business									
Business: Total		33	1	34	14.5%	217	7	224	15.7%
	Accounting	5		5	2.1%	66	0	66	4.6%
	Finance			0	0.0%	0	0	0	0.0%
	Business Administration	8	1	9	3.8%	56	4	60	4.2%
	International Business	3		3	1.3%	20	1	21	1.5%
	Management	8		8	3.4%	37	2	39	2.7%
	Marketing	4		4	1.7%	30	0	30	2.1%
	Sports Business	5		5	2.1%	8	0	8	0.6%
Economics		1	2	3	1.3%	15	18	33	2.3%
Total School of Business		34	3	37	15.8%	232	25	257	18.0%
School of Exercise Science		18	1	19	8.1%	146	7	153	10.7%
	Physical Education:	1	1	2	0.9%	15	7	22	1.5%
	Exercise Science	14		14	6.0%	106	0	106	7.4%
	Athletic Training	3		3	1.3%	25	0	25	1.8%
School of Nursing		15		15	6.4%	100	0	100	7.0%
Total School of Health Sciences		33	1	34	14.5%	246	7	253	17.7%
Contract Major				0	0.0%	2	0	2	0.1%
Total Undergraduate Student Majors		217	17	234	100%	1293	134	1427	100%
Number of Students with two or more Majors				17	7.8%		0	134	10.4%
Number Undergraduate Degrees Awarded				217			0	1293	
5 year Undergraduate/MBA		6	6 Broken into specialties above			57	41 Broken into specialties above		
5 year Undergraduate/MED		6	6 Broken into specialties above			20	21 Broken into specialties above (5 years)		
MBA		12	Includes 5 year			103	Includes 5 year		
MED		15	Includes 5 year			54	Includes 5 year		
MSAT		9				25	Includes 5 year		
MSN		14				14	Includes 5 year		
MFA		13				17	2 Year		

Undergraduate Graduating Degree Majors by School 2011-2012 to 2015-2016



2015-2016 Placement Report

Student Success after Graduation Graduate Outcome Statistics as of Six Months after Graduation Goal: 90% or higher



UG DEGREE HOLDERS ENROLLED IN GRADUATE PROGRAMS BY TYPE			PERCENTAGES BASED ON TOTAL # IN GRAD SCHOOL – 53		
Medical & Health Related	18	34 %	Law School	2	4 %
Business School	9	17 %	Arts & Sciences	23	43 %
Education	1	2 %		79	100 %

Partial list of Graduate Schools attending:

Adler School of Professional Psychology, Belmont University, Duke University, Drew Theological School, Indiana University, Lynn University, Marshal University, Penn State University, Radford University, Stanford University, St. George's University, St John's University, University of Sioux Falls, University of Southern California, University of Western Florida, Vanderbilt University, Wesley Theological Seminary, West Virginia School of Osteopathic Medicine West Virginia University

Partial List of Employers:

Alpha Gamma Delta, AmeriCorps, Ann Taylor Loft, Appalachian Reading Center, Arnett, Foster, Toothman CPAs, Design Studio, GIECO, Kaufmann, Rossin, Inc., Johns Hopkins Hospital Knob Hill Winery, Lakin Correctional Center, Mylan Pharmaceuticals, National Children's Hospital, New York Observer, Packer Thomas, CPAs, Powerplay Consulting, RAPP, Slippery Rock University, Schull Natural Resources, Tamara York Public Relations, Teach for America, The Arena Club, United Hospital Center, US Air Force, WDTV, WV Dept of Agriculture, West Virginia Wesleyan College

Faculty and Staff



Fall 2016 Employee Summary

Number of staff by employment status and occupational category: Fall 2016

Occupational Category	# of Full-time Employees	# of Part-time Employees	Full-Time Equivalent Employees
Total Number of Staff	279	119	319
Instructional Staff	91	53	109
Library Staff	7	1	7
Student and Academic Affairs and other Educational Services	10	18	16
Management	30	1	30
Business and Finance	9	1	9
Computer Engineering and Science	10	1	10
Community, Social Service, Legal, Arts, Design, Entertainment, and Sports and Media	43	19	49
Health Care Practitioners	3	7	5
Service Occupations	33	10	36
Sales and Related Occupations	2	0	2
Office and Administrative Support	22	8	25
Natural Resources, Construction, and Maintenance	17	0	17
Production, Transportation and Material Moving	2	0	2

NOTE: Full-time-equivalent (FTE) staff is calculated by summing the total number of full-time staff and adding one third of the total number of part-time staff. Graduate assistants are not included in the above figures. Many of the FTE figures may be included in the DFR.

Source: IPEDS Human Resources Survey (Employees as of November 1, 2016)

Faculty Profile

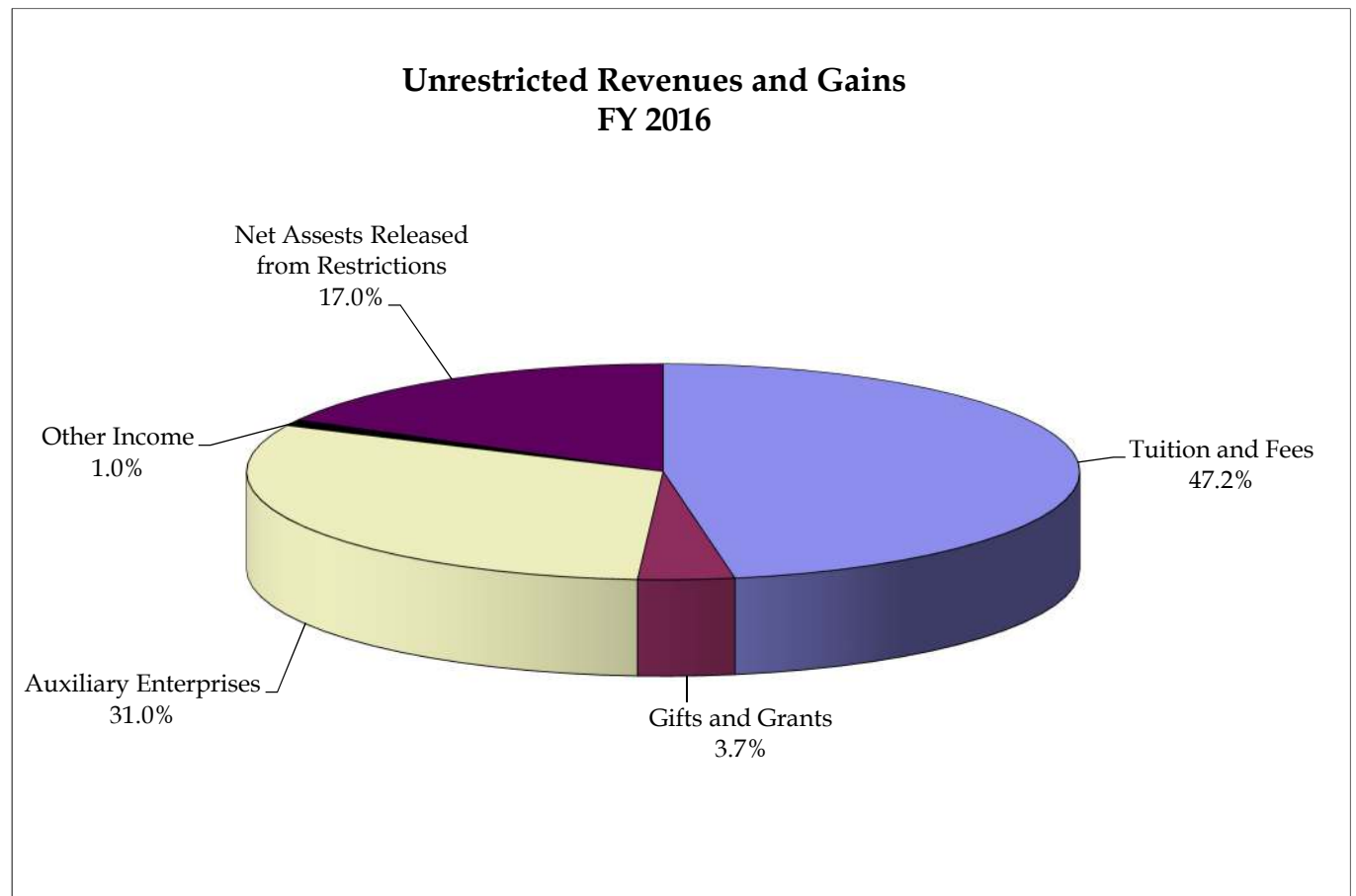
Source: Academic Dean's office using the AAUP guidelines. These will differ slightly from the IPED Humane Resources Guidelines listed on the previous page. In the AAUP guidelines, a staff member who teaches will be counted on this report as part-time faculty. In the IPEDS report a staff member can only count in their primary employment category.

2016-2017											
Fall Semester Faculty Profile											
Title	Number	%	Tenured	%	Doctorate	%	Terminal Degree	%	9- 12 Mo. Salary Ave.	9-12 Mo. Salary Ave.	% Change from 15-16 to 16-17
Professors	11		10	91%	11	100%	11	100%	\$ 63,938	\$ 65,534	2.71%
Men	9	82%	8	89%	9	100%	9	100%	\$ 64,736	\$ 66,376	2.53%
Women	2	18%	2	100%	2	100%	2	100%	\$ 59,946	\$ 61,745	3.00%
Associate Professor	31		30	97%	23	74%	28	90%	\$ 54,832	\$ 57,117	4.17%
Men	12	39%	12	100%	7	58%	11	92%	\$ 56,491	\$ 58,186	3.00%
Women	19	61%	18	95%	16	84%	17	89%	\$ 55,474	\$ 56,443	1.75%
Assistant Professor	42		5	12%	25	60%	29	69%	\$ 46,560	\$ 47,406	1.82%
Men	17	40%	3	18%	10	59%	12	71%	\$ 45,750	\$ 46,009	0.57%
Women	25	60%	2	8%	15	60%	17	68%	\$ 47,023	\$ 48,357	2.84%
Instructors	6		0	0%	0	0%	0	0%	\$ 40,800	\$ 39,849	-2.33%
Men	2	33%	0	0%	0	0%	0	0%		\$ 35,298	
Women	4	67%	0	0%	0	0%	0	0%	\$ 42,233	\$ 42,125	-0.26%
Total	91		45	49%	59	65%	68	75%	\$ 51,635	\$ 52,463	1.60%
Total Men	39	43%	23	59%	26	67%	32	82%	\$ 53,686	\$ 53,709	0.04%
Total Women	52	57%	22	42%	33	63%	36	69%	\$ 50,097	\$ 51,466	2.73%

Financials and Fund Raising



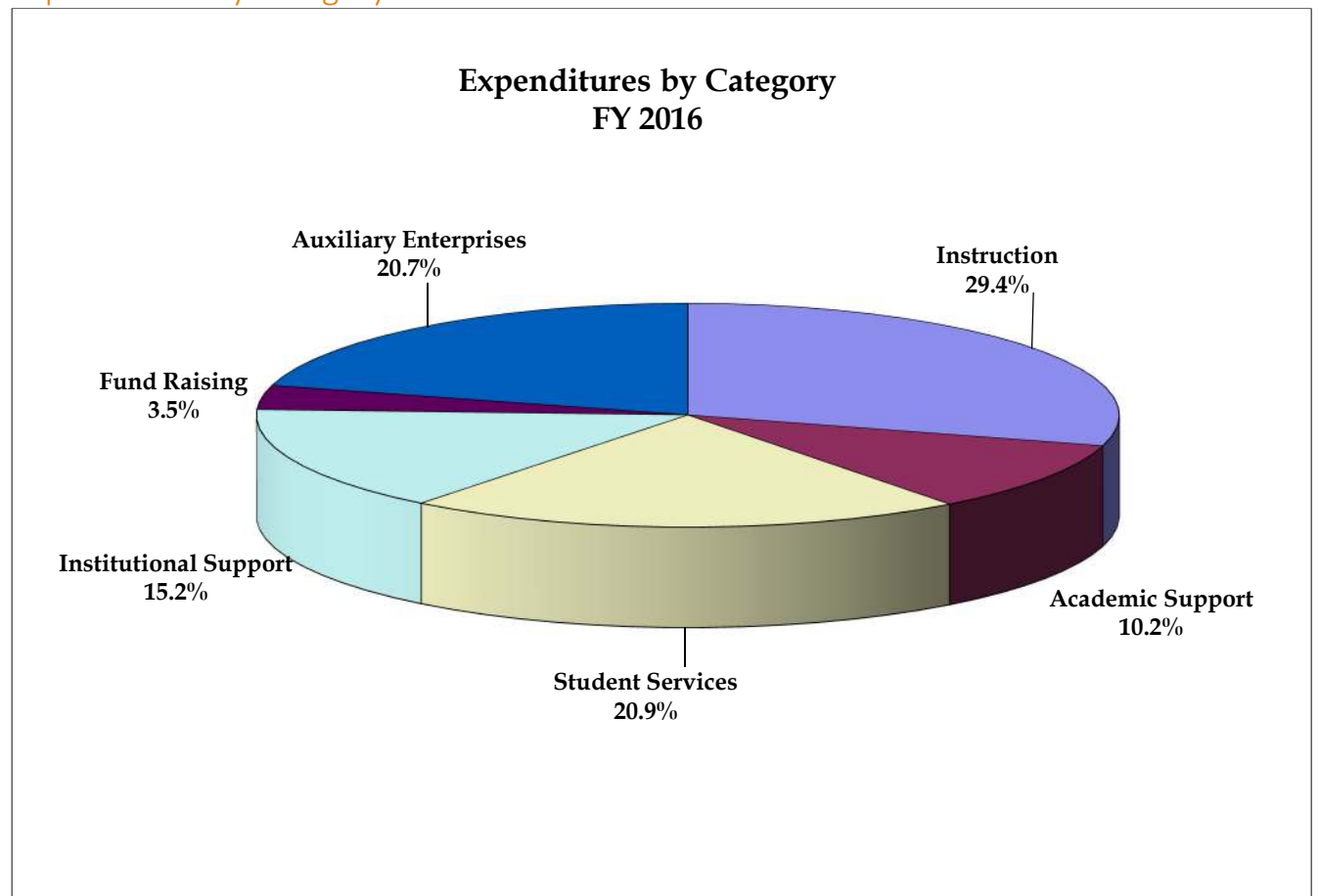
Unrestricted Revenues and Gains



(Revenues in Million Dollars)						
	<u>FY 2012</u>	<u>FY 2013</u>	<u>FY 2014</u>	<u>FY 2015</u>	<u>FY 2016</u>	<u>% Change 2016 vs 2012</u>
Tuition and Fees	\$13.17	\$13.31	\$14.83	\$15.87	\$15.93	21.0%
Gifts and Grants	\$1.13	\$1.35	\$3.18	\$2.77	\$1.26	11.9%
Auxiliary Enterprises	\$9.08	\$9.27	\$9.82	\$10.36	\$10.47	15.2%
Investment Income	\$0.27	\$0.18	\$0.35	\$0.44	\$0.32	20.9%
Net Assets Released from Restrictions	\$4.37	\$3.70	\$4.06	\$4.59	\$5.74	31.5%
Total Current Funds Revenues	\$28.01	\$27.82	\$32.25	\$34.03	\$33.72	20.4%
Academic Year FTE Enrollment	1375	1310	1423	1441	1469	6.8%

Source: WVWC Audited Financial Statements

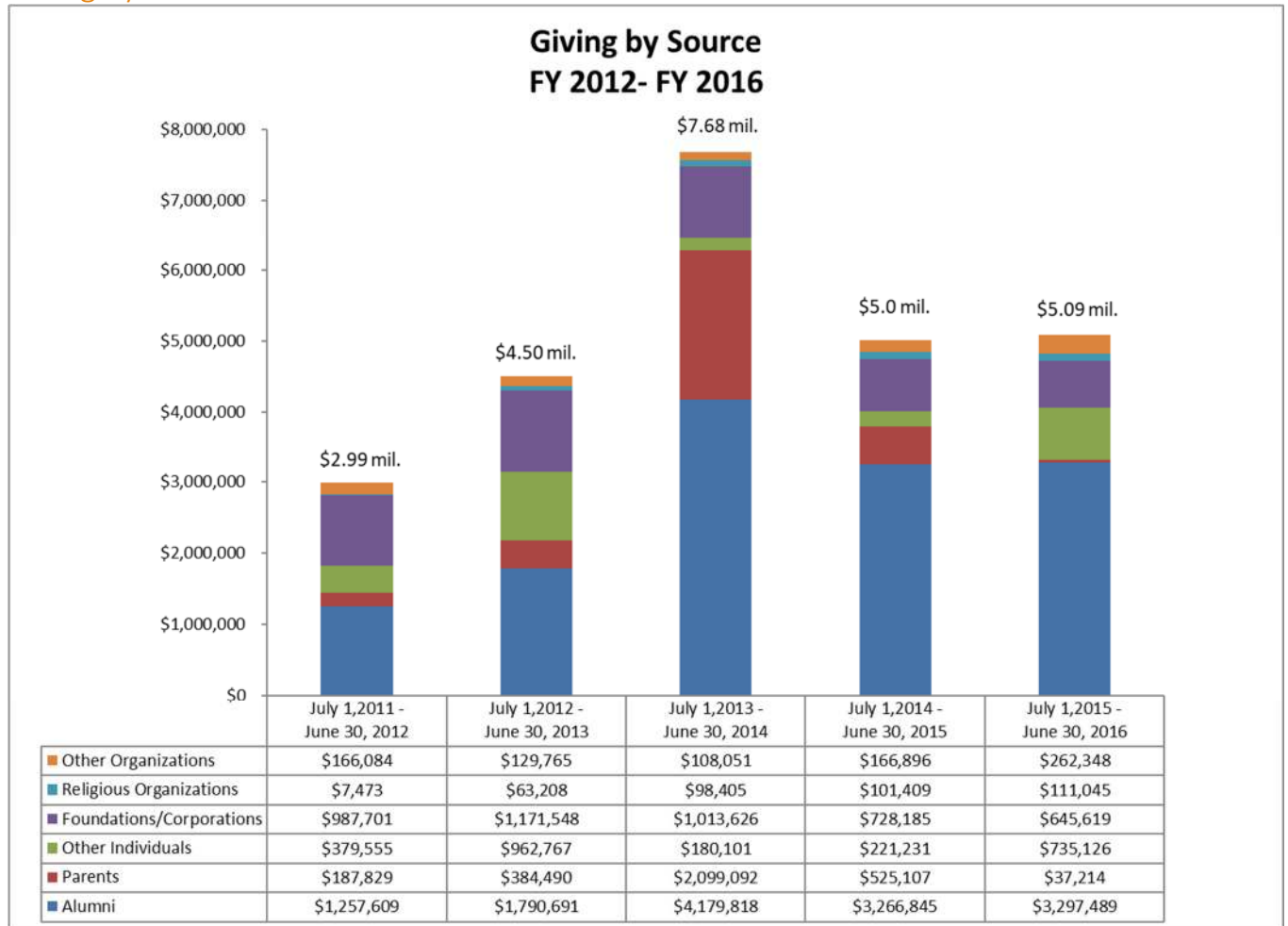
Expenditures by Category



(Expenditures in Million Dollars)						
	<u>FY 2012</u>	<u>FY 2013</u>	<u>FY 2014</u>	<u>FY 2015</u>	<u>FY 2016</u>	<u>% Change 2016 vs 2012</u>
Instruction	\$8.42	\$8.72	\$9.00	\$9.27	\$9.70	15.2%
Academic Support	\$2.70	\$2.56	\$2.41	\$2.87	\$3.36	24.6%
Student Services	\$5.84	\$6.03	\$6.44	\$6.71	\$6.89	17.9%
Institutional Support	\$4.72	\$3.83	\$4.32	\$4.09	\$5.00	5.8%
Fund Raising	\$0.94	\$1.04	\$1.12	\$1.09	\$1.15	22.4%
Auxiliary Enterprises	\$6.19	\$6.23	\$6.56	\$6.97	\$6.83	10.3%
Total Current Funds Expenditures	\$28.81	\$28.41	\$29.86	\$31.00	\$32.93	14.3%
Academic Year FTE Enrollment	1375	1310	1423	1441	1469	6.8%

Source: WVWC Audited Financial Statements

Giving by Source



Source: WVWC VSE Report for each Fiscal Year

West Virginia Wesleyan College Benchmark Institutions

Criteria Based Benchmark Institutions Fall 2011 Updated with 2013-14 IPEDS Data																			
UnitID	Institution Name	State	CC 2015: Basic (HD2015)	Grand total(EF2014 All students Undergradua te total)	Grand total(EF20 14 All students Graduate and First profession	Estimated FTE Enroll Fall 2014	First-time Full-time FR Fall 2014	Full-time retention rate 2014 (EF2014D)	Student- to-faculty ratio (EF2014D)	Value of endowment assets at the end of the fiscal year (F113- 14 F2)	Total expenses- Total amount (F113-14 F2)	Tuition and fees - Total (F1314 F2)	Net Tuition and Fees Per 12 month FTE Student 2013-14	Fall 2013 New FT Freshmen	Fall 2013 New FT Freshmen Net tuition and Fees	Fall 2013 New FT Freshmen Tuition and Discount Rate	Athletic Affiliation	ACA	UMC
210571	Albright College	PA	Bach AS	2360	33	2351	540	76	15	\$64,423,254	\$53,560,772	\$35,033,700	\$14,952	410	\$13,697	62.6%	NCAA III	0	UMC
156213	Asbury University	KY	S Masters	1646	233	1497	303	81	12	\$42,038,629	\$34,569,887	\$22,539,435	\$13,853	322	\$15,454	40.7%	NAIA	0	0
237181	Bethany College	WV	Bach AS	727	30	749	246	70	11	\$49,834,976	\$24,092,431	\$8,033,111	\$11,411	265	\$11,585	55.0%	NCAA III	ACA	0
231581	Bridgewater College	VA	Bach AS	1785		1772	488	74	15	\$83,051,300	\$40,393,423	\$21,393,000	\$11,576	552	\$9,749	66.5%	NCAA III	0	0
219806	Carson-Newman College	TN	M Masters	1757	605	1995	488	71	11	\$51,811,396	\$39,468,206	\$23,449,853	\$9,957	453	\$10,325	56.4%	NCAA II	ACA	0
219833	Christian Brothers University	TN	M Masters	1296	371	1426	351	84	13	\$31,704,414	\$47,031,080	\$20,909,647	\$11,708	253	\$12,091	57.1%	NCAA II	0	0
232025	Emory and Henry College	VA	Bach AS	1012	26	1013	284	73	11	\$96,614,350	\$29,622,886	\$10,755,228	\$10,596	244	\$9,861	66.0%	NCAA III	ACA	UMC
232089	Ferrum College	VA	Bach DF	1451		1438	499	48	15	\$49,199,012	\$34,918,688	\$19,506,221	\$13,555	544	\$13,439	53.0%	NCAA III	ACA	UMC
220215	Freed-Hardeman University	TN	S Masters	1405	462	1545	340	74	14	\$44,396,114	\$37,325,146	\$17,562,876	\$10,289	321	\$9,150	55.3%	NAIA	0	0
212656	Geneva College	PA	M Masters	1417	300	1588	312	84	13	\$38,063,014	\$38,338,267	\$25,186,936	\$14,772	339	\$12,104	52.0%	NCAA III	0	0
156745	Georgetown College	KY	Bach AS	979	283	1061	271	67	9	\$42,378,409	\$35,529,808	\$15,346,000	\$13,763	237	\$15,165	53.1%	NAIA	0	0
203085	Heidelberg University	OH	Bach AS	1098	132	1145	363	68	13	\$43,211,991	\$31,623,348	\$16,726,862	\$13,140	345	\$11,880	54.6%	NCAA III	0	0
203128	Hiram College	OH	Bach AS	1235	24	1133	274	69	11	\$69,399,237	\$34,984,110	\$19,272,958	\$15,968	304	\$12,929	57.3%	NCAA III	0	0
162760	Hood College	MD	L Masters	1359	1006	1729	288	76	11	\$83,449,740	\$42,664,595	\$26,466,957	\$15,055	270	\$13,462	59.5%	NCAA III	0	0
213251	Juniata College	PA	Bach AS	1615	17	1583	423	88	13	\$106,785,783	\$49,283,612	\$27,522,320	\$18,107	390	\$16,329	56.1%	NCAA III	0	0
157076	Kentucky Wesleyan College	KY	Bach DF	709		678	230	66	12	\$32,630,440	\$14,432,594	\$7,132,011	\$11,023	157	\$12,693	40.1%	NCAA II	0	UMC
220516	King College	TN	L Masters	2427	470	2730	188	76	11	\$35,638,722	\$34,895,423	\$25,839,959	\$9,183	226	\$8,254	66.9%	NCAA II	ACA	0
213507	Lebanon Valley College	PA	S Masters	1683	218	1738	413	85	11	\$58,365,855	\$54,370,628	\$35,293,245	\$20,319	404	\$18,015	49.5%	NCAA III	0	UMC
203845	Marietta College	OH	Bach DF	1371	129	1410	357	74	10	\$78,654,296	\$44,081,068	\$24,672,234	\$16,910	394	\$13,593	57.4%	NCAA III	0	0
220710	Maryville College	TN	Bach AS	1213		1182	334	71	13	\$68,084,457	\$29,041,150	\$14,862,697	\$11,900	313	\$10,673	65.7%	NCAA III	ACA	0
204264	Muskingum University	OH	M Masters	1724	350	1655	384	71	13	\$75,210,000	\$35,874,389	\$22,124,679	\$11,844	404	\$10,508	55.6%	NCAA III	0	0
215798	Saint Vincent College	PA	Bach AS	1626	203	1725	449	82	12	\$89,758,038	\$50,115,120	\$24,016,605	\$13,328	339	\$10,456	65.5%	NCAA III	0	0
215947	Seton Hill University	PA	M Masters	1869	378	1864	330	79	14	\$34,243,856	\$47,451,239	\$31,060,942	\$14,494	346	\$13,062	56.9%	NCAA II	0	0
216357	Thiel College	PA	Bach AS	1074		1051	280	69	13	\$31,127,387	\$28,194,139	\$14,050,379	\$13,497	322	\$12,758	52.4%	NCAA III	0	0
237312	University of Charleston	WV	S Masters	1549	562	1967	332	61	15	\$40,632,643	\$41,546,948	\$24,781,796	\$13,730	240	\$9,136	53.5%	NCAA II	ACA	
234164	Virginia Union University	VA	Bach AS	1323	392	1676	420	50	14	\$31,526,890	\$32,779,669	\$19,401,079	\$11,260	380	\$11,084	26.7%	NCAA II	0	0
234173	Virginia Wesleyan College	VA	Bach AS	1501		1447	406	66	13	\$57,712,712	\$39,282,315	\$23,686,303	\$15,029	435	\$17,162	47.2%	NCAA III	0	UMC
216807	Westminster College	PA	Bach AS	1159	148	1182	278	82	10	\$115,107,507	\$38,643,504	\$18,554,946	\$12,921	318	\$14,053	56.7%	NCAA III	0	0
238078	Wheeling Jesuit University	WV	M Masters	1187	388	1269	252	74	12	\$16,106,296	\$36,711,502	\$21,847,095	\$17,805	268	\$12,490	55.1%	NCAA II	ACA	
206507	Wilmington College	OH	Bach DF	1200		1140	383	68	16	\$36,997,412	\$24,720,233	\$12,452,969	\$10,616	286	\$12,265	56.5%	NCAA III	0	0
	Count			30	23	30	30	30	30	30	30	30	30	30	30	30		6	3
	75%tile			1641	390	1728	411	78	14	\$73,757,309	\$42,385,183	\$24,754,406	\$14,907	393	\$13,560	57.4%	NAIA=3		
	Median			1388	283	1472	337	74	13	\$49,516,994	\$37,018,324	\$21,620,048	\$13,412	322	\$12,378	55.8%	NCAAI=8		
	25%tile			1190	131	1154	281	68	11	\$37,263,813	\$33,227,224	\$16,935,866	\$11,452	269	\$10,549	53.0%	NCAAI=19		
237969	West Virginia Wesleyan College	WV	S Masters	1390	121	1478	415	73	13	\$44,908,387	\$28,406,786	\$14,833,460	\$10,294	471	\$9,252	65.5%			

	Criterion by Category													
	Control:	Private												
	State:	KY, OH, PA, TN, VA, WV, MD												
	Carnegie Classification 2010 Basic:	BA Arts and Science, BA Diverse Fields, MA University Smaller, MA University Medium												
	Carnegie Classification 2010 Undergraduate Profile:	Full-time, 4 year, Selective, Lower Transfer Students												
		Full-time, 4 year, Selective, Higher Transfer Students												
		Full-time, 4 year, More Selective, Lower Transfer Students												
		Full-time, 4 year, More Selective, Higher Transfer Students												
	Carnegie Classification 2010 Enrollment Profile:	Only Undergraduate 4 year, Very High Undergraduate, High Undergraduate												
	Carnegie Classification 2010 Size and Setting:	Very Small 4 year Primarily Residential												
		Very Small 4 year Highly Residential												
		Small 4 year Primarily Residential												
		Small 4 year Highly Residential												
	Total Enrollment Fall 2010:	800 - 3000 Students												
	Value of Endowment Assets End of 2009-10 Academic Year:	20 Million - 100 Million												
	Total Expenses 2009-10 Academic Year:	Below \$50 Million												

Schools Approved by the Board of Trustees, January 2012

Compiled by OIR, Data Source IPEDS Data Center updated summer 2016