



# West Virginia Wesleyan College Fact Book

COMPILED BY  
OFFICE OF INSTITUTIONAL RESEARCH

## Table of Contents

<b>Mission and Organizational Structure.....</b>	<b>2</b>
<b>West Virginia Wesleyan College Statement of Mission .....</b>	<b>3</b>
<b>Wesleyan Accreditation .....</b>	<b>3</b>
<b>Organizational Chart Fall 2018-19 .....</b>	<b>4</b>
<b>West Virginia Wesleyan College Administrative Executive Officers 2018-2019 .....</b>	<b>5</b>
<b>Administrative Executive Officers .....</b>	<b>5</b>
<b>Academic School Directors.....</b>	<b>5</b>
<b>Fall 2018 New Students .....</b>	<b>6</b>
<b>First-time Full-time Freshmen Financial Aid Profile .....</b>	<b>10</b>
<b>Fall 2018 Student Body .....</b>	<b>11</b>
<b>Historical Enrollment Summary.....</b>	<b>11</b>
<b>Fall 2018 All Students by Gender, Race and Ethnicity.....</b>	<b>16</b>
<b>Fall 2018 All Student Athletes by Scholarship Status.....</b>	<b>23</b>
<b>Student Outcomes .....</b>	<b>24</b>
<b>Institutional Yearly Retention Rates .....</b>	<b>25</b>
<b>Degrees Awarded by Major Field of Study .....</b>	<b>27</b>
<b>2017-2018 Placement Report.....</b>	<b>31</b>
<b>Faculty and Staff .....</b>	<b>32</b>
<b>Fall 2018 Employee Summary .....</b>	<b>33</b>
<b>Faculty Profile .....</b>	<b>33</b>
<b>Financials and Fund Raising .....</b>	<b>35</b>
<b>Unrestricted Revenues and Gains .....</b>	<b>36</b>
<b>Expenditures by Category .....</b>	<b>37</b>
<b>Giving by Source .....</b>	<b>38</b>
<b>West Virginia Wesleyan College Benchmark Institutions .....</b>	<b>42</b>

# Mission and Organizational Structure



## West Virginia Wesleyan College Statement of Mission

West Virginia Wesleyan College challenges its students to a life-long commitment to develop their intellectual, ethical, spiritual, and leadership potential and to set and uphold standards of excellence. Firmly rooted in the liberal arts tradition and closely related to The United Methodist Church, the College is a community of learning based on fundamental principles formed at the intersection of Christian faith and liberal education: intellectual rigor, self-discovery, human dignity, mutual support, social justice, self-discipline, mental and physical wellness, the appreciation of diversity and the natural world, and the judicious use of resources. The College recognizes and affirms its interdependence with the external communities - local, regional, national, and global - and its covenant with the people of West Virginia to share its educational and cultural resources.

West Virginia Wesleyan College prepares its students through its curriculum of arts and sciences, pre-professional, professional, and graduate studies, and its rich campus life program. As a residential institution of higher education, the College aspires to graduate broadly educated men and women who

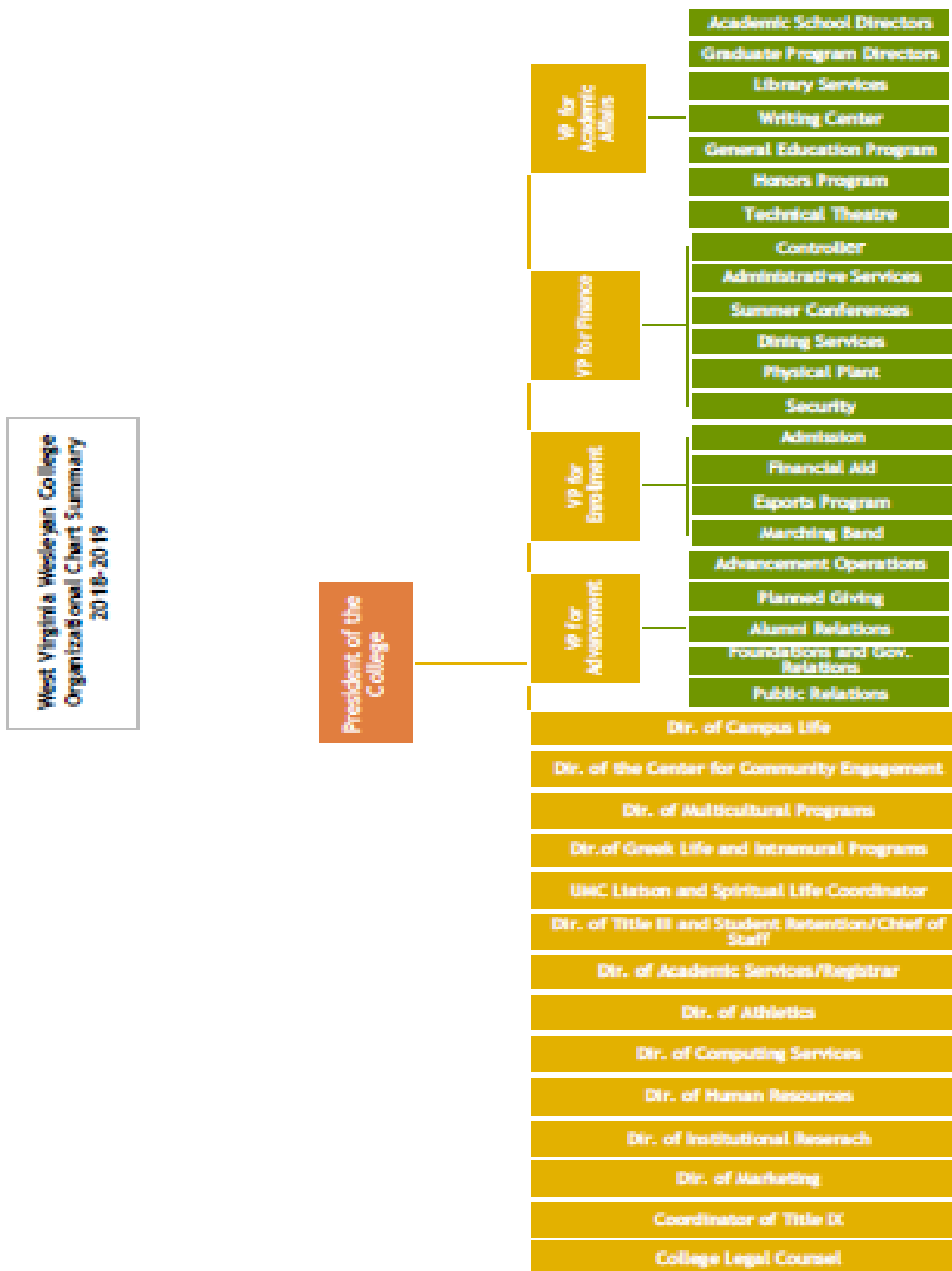
- Think critically and creatively,
- Communicate effectively,
- Act responsibly, and
- Demonstrate their local and world citizenship through service

## Wesleyan Accreditation

West Virginia Wesleyan is accredited by The Higher Learning Commission (30 North LaSalle Street, Suite 2400, Chicago, IL 60602-2504; telephone 1-800-621-7440) and approved by the University Senate of The United Methodist Church. It is a member of the National Association of Schools of Music and is approved by the West Virginia Department of Education. The College participates in the Interstate Certification Project, whereby a number of states certify teachers graduating from Wesleyan's Department of Education. The nursing program is fully accredited by the West Virginia Board of Examiners for Registered Nurses (101 Dee Drive, Suite 102, Charleston, WV 25311- 1620; telephone 304-558-3596), and accredited by the Accreditation Commission for Education in Nursing, Inc., (3343 Peachtree Road NE, Suite 850, Atlanta, GA, 30326; telephone 1-866-747-9965). The athletic training program is accredited by the Commission on Accreditation of Athletic Training Education (CAATE), (6836 Austin Center Blvd., Suite 250, Austin, TX 78731-3193, 512-733-9700)\*. The School of Business is a candidate for accreditation with the Accreditation Council for Business Schools and Programs (ACBSP), (11520 West 119th Street, Overland Park, KS 66213, 913-339-9356).

The College holds membership in the Appalachian College Association, The National Association of Independent Colleges and Universities, the American Association of Colleges for Teacher Education, the National Association of Schools and Colleges of The United Methodist Church, Campus Compact, and the Council of Independent Colleges

## Organizational Chart Fall 2018-19



## West Virginia Wesleyan College Administrative Executive Officers 2018-2019

### Administrative Executive Officers

**Joel Thierstein, Ph.D.**, President of the College

**Dr. James Moore, Ph.D.**, Vice President for Academic Affairs and Dean of the College

**John Waltz, M.A.**, Vice President for Enrollment Management

**Scott McKinney, Ed.D.**, Vice President for Administration and Finance

**Robert N. Skinner, M.A.**, Vice President of Advancement

### Academic School Directors

**Susan L. Aloj, Ed.D.**, School of Business

**Karen R. Petitto, Ed.D.**, School of Education

**James H. Moore, Ph.D.**, School of Fine Arts and Humanities

**Rae Emrick, MSAT, Ed.D.** School of Exercise Science

**Susan Leight Ed.D.**, School of Nursing

**Pamel Wovchko, Ph.D.**, School of Science

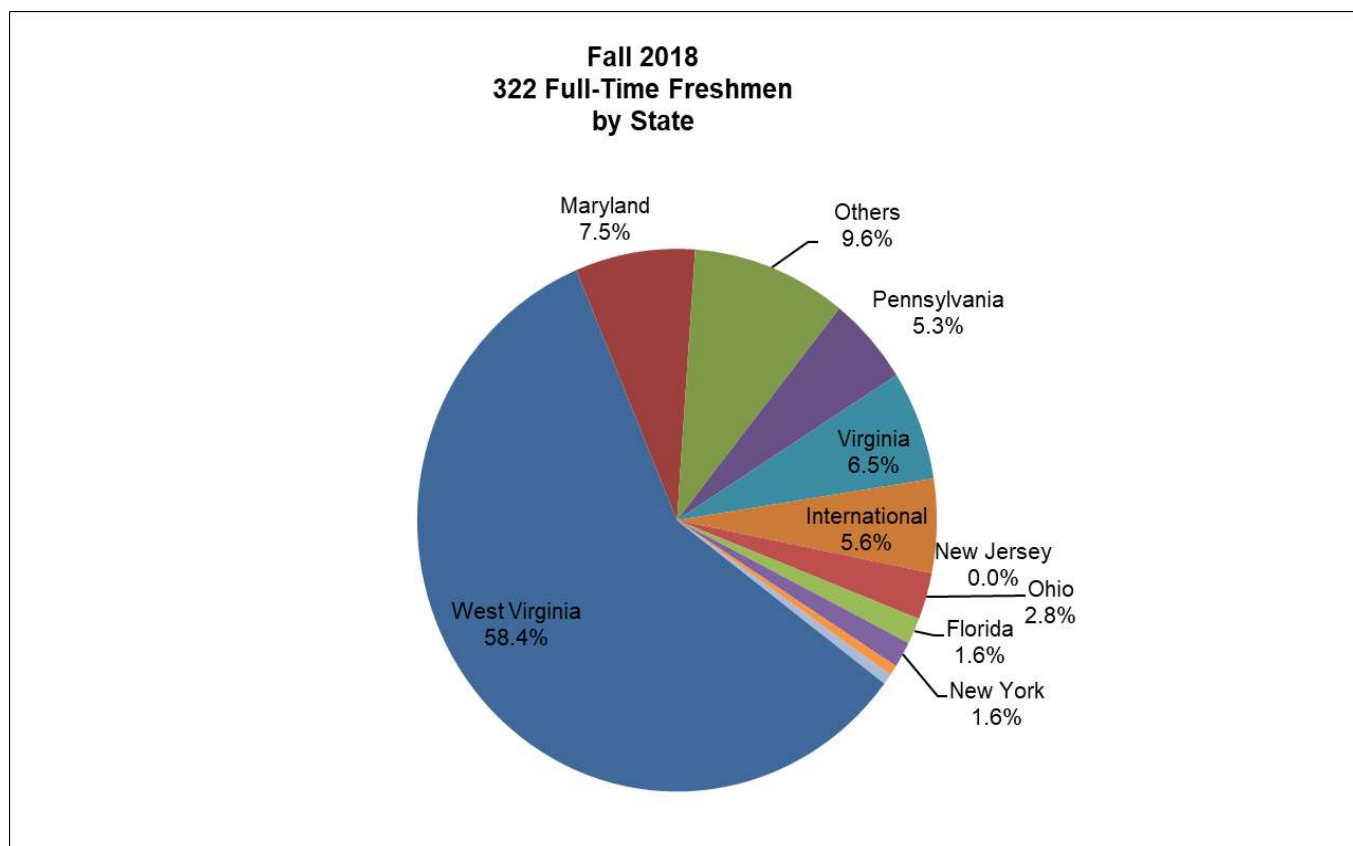
**James H. Moore, Ph.D.** School of Social and Behavioral Science

## Fall 2018 New Students



## Fall 2014-2018 Full-Time Freshmen Enrollment Funnel and Academic Profile

	Fall 2014	Fall 2015	Fall 2016	Fall 2017	Fall 2018
Applicants	1788	1782	1752	2280	2164
Accepted	1377	1376	1347	1607	1515
Accept rate	77.0%	77.2%	76.9%	70.5%	70.0%
Matriculates	415	392	387	366	322
Yield	30.1%	28.5%	28.7%	22.8%	21.3%
High School GPA	3.49	3.48	3.53	3.52	3.53
ACT Composite Score	22.5	22.2	22.5	22.3	22.3
New SAT Verbal Score (median)	530	520	530	530	542
New SAT Math Score (median)	510	520	530	530	535
New SAT Composite (median)	1040	1050	1060	1070	1077





## Fall 2014-2018 Full-Time Freshmen Demographics

	Fall 2014	Fall 2015	Fall 2016	Fall 2017	Fall 2018
<b>Home State</b>					
West Virginia	254	212	236	208	188
Maryland	40	57	20	32	24
Pennsylvania	19	18	18	31	31
Virginia	39	42	27	20	17
International	22	19	18	18	21
Others	11	20	25	14	18
New Jersey	8	10	8	14	0
Florida	6	3	18	12	9
Ohio	11	8	15	11	5
New York	2	3	1	6	5
New Hampshire	2	0	1	0	0
Massachusetts	1	0	0	0	2
Connecticut	0	0	0	0	2
Maine	0	0	0	0	0

<b>Religious</b>					
United Methodist	66	69	67	34	29
Roman Catholic	43	33	44	40	16
Baptist	44	34	53	34	35
Christian Missionary	0	0	0	0	0
Lutheran	2	6	5	2	3
Nazarene	4	1	2	1	1
Jewish	2	1	2	1	1
Presbyterian	7	10	7	8	5
Episcopal	3	3	3	4	3
United Church of Christ	7	4	7	4	3
Other	86	57	68	74	56
No Preference	151	174	129	164	170

<b>Ethnic Classification</b>					
	<b>Fall 2014</b>	<b>Fall 2015</b>	<b>Fall 2016</b>	<b>Fall 2017</b>	<b>Fall 2018</b>
White American	33	298	296	271	223
African American	39	45	30	42	36
Asian American	2	1	0	1	3
American Indian/Alaska Native	2	0	2	2	2
Spanish American(Hispanic)	9	12	14	21	9
Pacific Islander/Hawaiian	1	1	0	0	0
Not specified	2	4	0	0	2
International	10	20	27	14	20
More than one	16	11	18	15	17
<b>Gender</b>					
Female	245	215	213	192	163
Male	170	177	174	174	159

<b>Academic Majors Upon Admission</b>					
Business/Economics	33	58	62	55	44
Exercise Science/Athletic Training	50	41	42	41	38
Nursing	56	40	37	42	46
Biology/Environmental Science	45	42	35	57	33
Undecided/General Studies	51	42	30	22	21
Chemistry/Biochemistry	30	30	26	23	16
Engineering 3/2 , Physics, Geophysics	29	30	26	19	21
Criminal Justice/Sociology/Poli Sci	23	25	25	22	16
Education	33	25	24	23	20
Psychology	17	11	19	13	13
Music/Music Education	10	11	15	7	14
Art	8	8	12	13	7
English	7	4	9	4	4
Math/Computer Science	6	8	8	10	8
Communication Public Relations	5	6	8	5	4
History and International Studies	6	2	3	2	7
Health Science			3	2	5
Theatre and Music Theatre and Arts Admin.	5	7	2	5	5
Christian Education/Religious Studies/Philosophy	0	2	1	1	0
Gender Studies	1	0	0	0	0

Source: WVWC Admission Records as of the Census date

## First-time Full-time Freshmen Financial Aid Profile

Undergraduate Cost of Attendance and Direct Cost					
	2014-15	2015-16	2016-17	2017-18	2018-19
WVWC Tuition and Fees	\$27,858	\$28,792	\$29,752	\$30,752	\$31,640
WVWC Room and Board	\$7,890	\$8,066	\$8,248	\$8,434	\$8,856
<b>WVWC Direct Cost</b>	\$35,748	\$36,858	\$38,000	\$39,186	\$40,496
WVWC Indirect Cost(Book, Supplies, Travel)	\$6,000	\$6,000	\$6,065	\$6,065	\$6,065
<b>Total Cost of Attendance</b>	\$41,748	\$42,858	\$44,065	\$45,251	\$46,561
Awarded Financial Aid to First Time Full-Time Freshmen					
	Fall 2014	Fall 2015	Fall 2016	Fall 2017	Fall 2018
Number First-time Full-time Freshmen	415	392	387	366	322
% Completing FAFSA	91%	94%	90%	94%	93%
% applied for Need or Merit Financial Aid	99%	99%	100%	99%	100%
% received any Financial Aid	99%	99%	100%	99%	100%
% received scholarship or grant aid	99%	99%	100%	99%	100%
% received self-help aid	75%	70%	75%	93%	77%
Average Financial Aid Award All Sources*	\$28,247	\$30,416	\$30,145	\$30,396	\$32,994
Average Scholarship and Grant Award All Sources	\$22,905	\$23,829	\$25,619	\$25,944	\$27,505
Average Self Help Award All Sources	\$5,343	\$4,633	\$5,289	\$6,297	\$5,489
% received Alternative Loans	6%	5%	7%	4%	9%
% received Parent Plus Loans	11%	16%	11%	17%	16%
Median Estimated Family Contribution	\$7,356	\$10,541	\$9,274	\$7,562	\$9,166
% Pell Eligible	40%	34%	34%	41%	39%
First Time Full-Time Freshmen Net Cost of Attendance and Out of Pocket Direct Cost					
	2014-15	2015-16	2016-17	2017-18	2018-19
Net Cost of Attendance <i>(Total Cost of Attendance -Ave. Scholarships and Grants)</i>	\$18,843	\$19,029	\$18,446	\$19,307	\$19,056
Out of Pocket Direct Cost <i>(Total Direct Cost -Average Financial Aid Award All Source)</i>	\$7,501	\$6,442	\$7,855	\$8,790	\$7,502

Source: Financial Aid Files as of no later than November 15th each year.

\*Does not Include Parent Loans

## Fall 2018 Student Body



## Historical Enrollment Summary

<b>UNDERGRADUATE STUDENT ENROLLMENT</b>										
<b>NEW FULL TIME STUDENTS</b>	2014-2015		2015-2016		2016-2017		2017-2018		2018-2019	
	Fall	Spring	Fall	Spring	Fall	Spring	Fall	Spring	Fall	Spring
Fall First Year	415	374	392	341	387	339	366	317	322	291
Spring First Year		2		3		5		6		4
Fall Transfers	40	35	49	46	42	32	32	31	24	20
Spring Transfers		16		6		11		8		7
Fall Visitors	4	3	6	4	4	0	5	1	1	0
Spring Visitors	0	1		2	1	0	0	0	0	1
<b>Total</b>	459	431	447	402	434	387	403	363	347	323
<b>RETURNING FULL TIME STUDENTS</b>										
Returning Students	891	835	910	832	918	843	873	799	802	748
Fall Readmit	7		6		15		13		13	
Spring Readmit		2		8		8		8		7
<b>Total Returning</b>	898	837	916	840	933	851	886	807	815	755
<b>TOTAL UNDERGRADUATE</b>										
<b>Full-time</b>	1357	1268	1363	1242	1367	1238	1289	1170	1162	1078
<b>Part-time</b>	33	35	26	38	29	38	31	41	18	22
<b>Total Headcount</b>	1390	1303	1389	1280	1396	1276	1320	1211	1180	1100
<b>Undergraduate FTE</b>	1372	1284	1373.3	1257.6	1379.6	1255.4	1305.1	1189.8	1170.0	1086.9
<b>Average Undergraduate FTE</b>	1328		1315		1318		1247		1128	

<b>GRADUATE STUDENT ENROLLMENT</b>										
<b>MASTER OF BUSINESS ADMINISTRATION</b>	2014-15		2015-2016		2016-2017		2017-2018		2018-2019	
	Fall	Spring	Fall	Spring	Fall	Spring	Fall	Spring	Fall	Spring
Full-time	15	12	9	7	18	17	20	17	15	15
Part-time	1	0	1	1	1	1	0	1	0	2
Total Headcount	16	12	10	8	19	18	20	18	15	17
FTE	15	12	9.5	7.5	18.5	17.5	20.0	17.5	15.0	16.0
<i>Five Year MBA Program (not included in above MBA figures)#</i>	14	13	10	24	24	25	20	29	20	24
<b>MASTER'S IN EDUCATION****</b>										
Full-time	12	14	16	14	9	7	2	1		
Part-time	5	9	4	2	3	2	1	0	1	1
Total Headcount	17	23	20	16	12	9	3	1	1	1
FTE	14.833	17.5	18.2	15.1	10.7	8.0	2.7	1.0	0.5	0.5
<i>Five YEAR MED (not included in above MED figures)#</i>	8	13	12	13	14	14	10	10	2	1
<b>MASTER OF SCIENCE in ATHLETIC TRAINING##</b>										
Full-time	12	11	12	11	10	9	11	11	9	9
Part-time	0	1	0	1	0	0	0	0	1	0
Total Headcount	12	12	12	12	10	9	11	11	10	9
FTE	12	11.83	12	11.5	10	9	11	11	9.5	9
<b>Masters of Science in Nursing***</b>										
Full-time	24	28	44	51	67	53	79	47	64	48
Part-time	5	9	10	6	9	7	8	8	8	2
Total Headcount	29	37	54	57	76	60	87	55	72	50
FTE	26.5	32.5	49.5	54	72.2	56.88	83.7	51	68.0	49
<b>Masters in Fine Arts-Creative Writing####</b>										
Full-time	44	51	67	53	79	47	64	48	63	37
Part-time	10	6	9	7	8	8	8	2	8	6
Total Headcount	54	57	76	60	87	55	72	50	71	43
FTE	49.5	54	72.2	56.88	83.7	51	68.0	49	67.1	40.16
<b>TOTAL MASTERS LEVEL GRADUATE STUDENTS</b>										
Full-time Enrollment	105	107	115	99	134	98	120	96	104	74
Part-time Enrollment	16	16	14	11	12	11	9	3	10	9
Total Headcount	121	123	129	110	146	109	129	99	114	83
FTE	113	114	122.8	105	140.8	104	124.7	97.50	109.1	78.66
Average Graduate FTE	114		114		122		111		94	

<b>TOTAL STUDENT BODY ENROLLMENT SUMMARY</b>										
	<b>2014-2015</b>		<b>2015-2016</b>		<b>2016-2017</b>		<b>2017-2018</b>		<b>2018-2019</b>	
	<b>Fall</b>	<b>Spring</b>	<b>Fall</b>	<b>Spring</b>	<b>Fall</b>	<b>Spring</b>	<b>Fall</b>	<b>Spring</b>	<b>Fall</b>	<b>Spring</b>
<b>Total Student Body Full-time Enrollment</b>	1462	1375	1478	1341	1501	1336	1409	1266	1266	1152
<b>Total Student Body Part-time Enrollment</b>	49	51	40	49	41	49	40	44	28	31
<b>Total Student Body Headcount Enrollment</b>	<b>1511</b>	<b>1426</b>	<b>1518</b>	<b>1390</b>	<b>1542</b>	<b>1385</b>	<b>1449</b>	<b>1310</b>	<b>1294</b>	<b>1183</b>
<b>Total Student Body Semester FTE</b>	<b>1485</b>	<b>1399</b>	<b>1496.1</b>	<b>1363</b>	<b>1520.4</b>	<b>1359</b>	<b>1429.8</b>	<b>1287.25</b>	<b>1279.1</b>	<b>1165.58</b>
<b>Total Student Body Average FTE</b>	<b>1442</b>		<b>1429</b>		<b>1440</b>		<b>1359</b>		<b>1222</b>	

\*\*\* The 5 year MBA program students are officially counted in the undergraduate headcount and FTE numbers but are also enrolled in one or more masters level courses.

\*\*\*\* The MED PROGRAM was reestablished in Fall 2007. The 5 year MED program students are officially counted in the undergraduate headcount and FTE numbers but are also enrolled in one or more masters level courses. The program began phase out in Spring 2018.

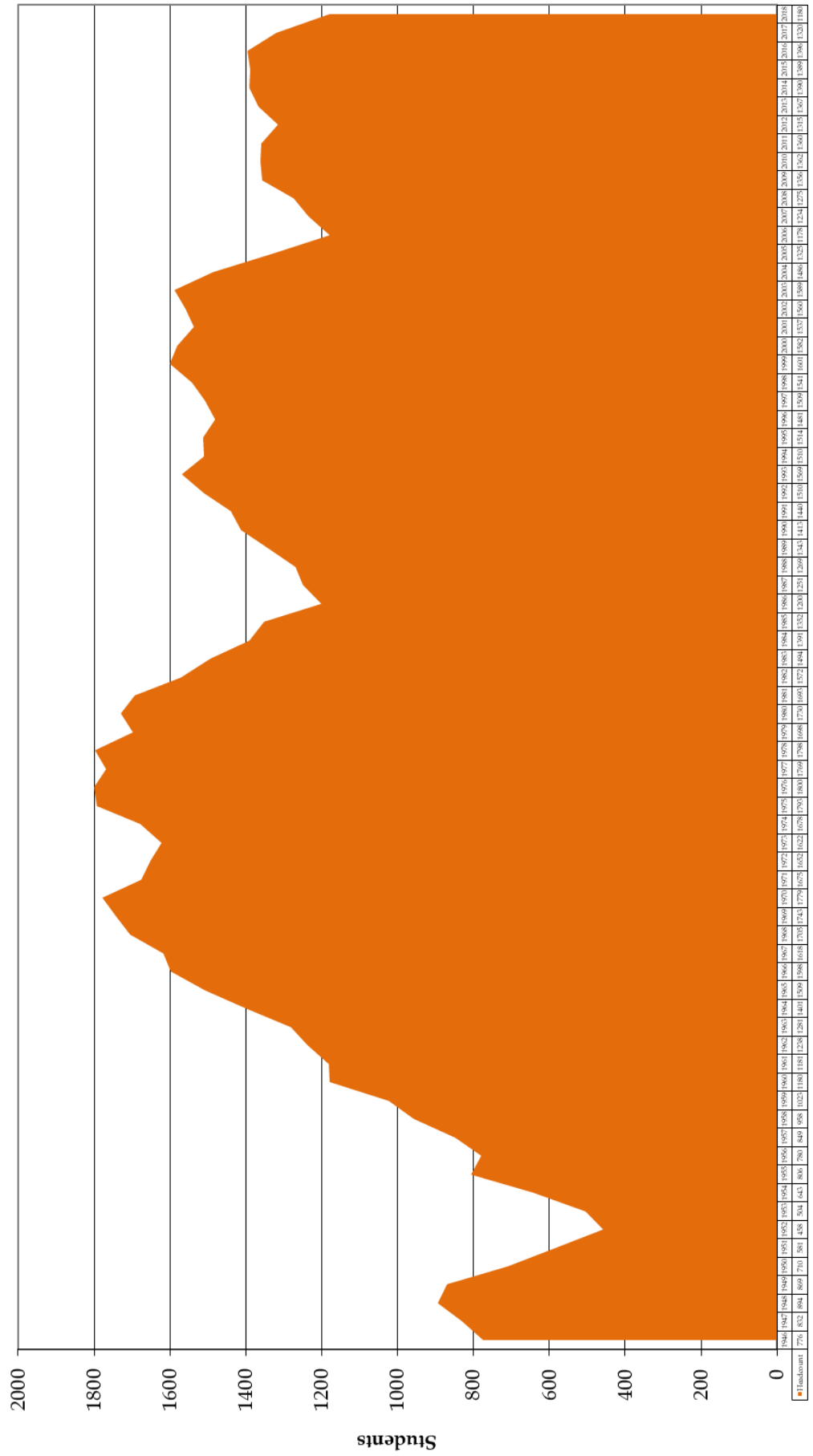
## The MS AT Program had its first enrollment in Fall 2008.

### The MSN Program had its first enrollment in Fall 2009.

#### The MFA in Creative Writing had its first enrollment in July 2011.

*Source: WVWC Student Records as of the Census date (Spring Enrollment and Retention Report)*

# West Virginia Wesleyan College Undergraduate Student Headcount Fall 1946 to Fall 2018





## FALL 2018 ALL STUDENTS ETHNIC AND GENDER BREAKDOWN

Undergraduates

		International	Black non-Hispanic	Am. Indian or Alaskan Native	Asian	Pacific Islander/Hawaiian	Hispanic	White, non-Hispanic	Race/eth. unknown	More than one	Total	Gender Percentage
<b>Full Time Undergraduates</b>												
	Men	55	87	3	1	0	18	330	6	28	528	45.4%
	Women	15	30	1	3	0	20	541	2	22	634	54.6%
<b>Full-time</b>		70	117	4	4	0	38	871	8	50	1162	
	<b>Ethnic Percentages</b>	6.0%	10.1%	0.3%	0.3%	0.0%	3.3%	75.0%	0.7%	4.3%		
<b>Part Time Undergraduates</b>												
	Men	0	1	0	0	0	0	8	0	0	9	50.0%
	Women	1	0	0	0	0	0	6	2	0	9	50.0%
<b>Total Undergraduates</b>												
	Men	55	88	3	1	0	18	338	6	28	537	45.5%
	Women	16	30	1	3	0	20	547	4	22	643	54.5%
<b>Undergraduate</b>		71	118	4	4	0	38	885	10	50	1180	
	<b>Ethnic Percentages</b>	6.0%	10.0%	0.3%	0.3%	0.0%	3.2%	75.0%	0.8%	4.2%		

Graduate Students

<b>Full Time Graduate Students</b>												
	Men	2	2	0	0	0	0	22	1	0	27	26.0%
	Women	0	2	0	0	0	0	67	8	0	77	74.0%
<b>Part-time Graduate Students</b>												
	Men	0	0	0	0	0	0	0	0	0	0	0.0%
	Women	0	0	0	0	0	0	10	0	0	10	100.0%
<b>Total Graduate Students</b>												
	Men	2	2	0	0	0	0	22	1	0	27	23.7%
	Women	0	2	0	0	0	0	77	8	0	87	76.3%
<b>Total Graduate Students</b>		2	4	0	0	0	0	99	9	0	114	
	<b>Ethnic Percentages</b>	1.8%	3.5%	0.0%	0.0%	0.0%	0.0%	86.8%	7.9%	0.0%		

Grand Total Students

<b>Grand Total Students</b>	Men	57	90	3	1	0	18	360	7	28	564	43.6%
	Women	16	32	1	3	0	20	624	12	22	730	56.4%
	<b>Ethnic Percentages</b>	73	122	4	4	0	38	984	19	50	1294	
		5.6%	9.4%	0.3%	0.3%	0.0%	2.9%	76.0%	1.5%	3.9%		

## Ten Year Full-time Undergraduate Ethnic and Gender and Basic Geographic Breakdown Summary

**% Fall Full-time Undergraduates Ethnic Summary**

	2009	2010	2011	2012	2013	2014	2015	2016	2017	2018
Minority*	12.4%	13.2%	14.6%	15.8%	13.5%	14.1%	15.4%	14.7%	16.1%	18.3%
International**	4.1%	4.2%	5.5%	4.8%	5.3%	5.0%	5.3%	6.2%	5.8%	6.0%
White/Non-Hispanic	82.0%	81.4%	78.4%	78.2%	79.9%	79.9%	78.4%	78.3%	77.6%	75.0%
Unknown	1.5%	1.2%	1.5%	1.2%	1.3%	1.0%	1.0%	0.8%	0.5%	.7%

\* Minority students include: Black Non-Hispanic, Am. Indian or Alaskan, Asian or Pacific Islander and Hispanic

\*\* International students include: students with the ethnic code of Nonresident Alien

**% Fall Full-time Undergraduates Gender Summary**

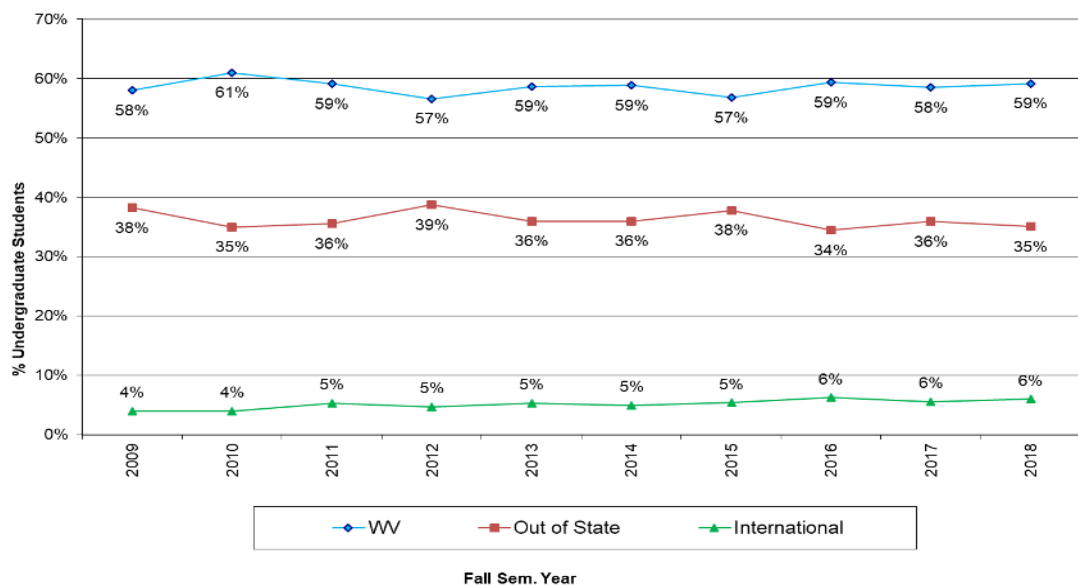
	2009	2010	2011	2012	2013	2014	2015	2016	2017	2018
Male	45.6%	45.5%	46.7%	46.0%	46.7%	45.2%	45.3%	45.2%	44%	45%
Female	54.4%	54.5%	53.3%	54.0%	53.3%	54.8%	54.7%	54.8%	56%	55%

**% Fall Undergraduates Geographic Summary**

	2009	2010	2011	2012	2013	2014	2015	2016	2017	2018
WV	58%	61%	59%	57%	59%	59%	57%	59%	58%	59%
Out of State	38%	35%	36%	39%	36%	36%	38%	35%	36%	35%
International	4%	4%	5%	5%	5%	5%	5%	6%	6%	6%
Undergrad Head Count	1356	1,362	1,360	1,315	1,367	1,390	1,389	1,367	1,289	1,180

Source: WVWC Student Records as of the Census date

**Fall Undergraduate Headcount Geographic Summary  
Ten Year History**

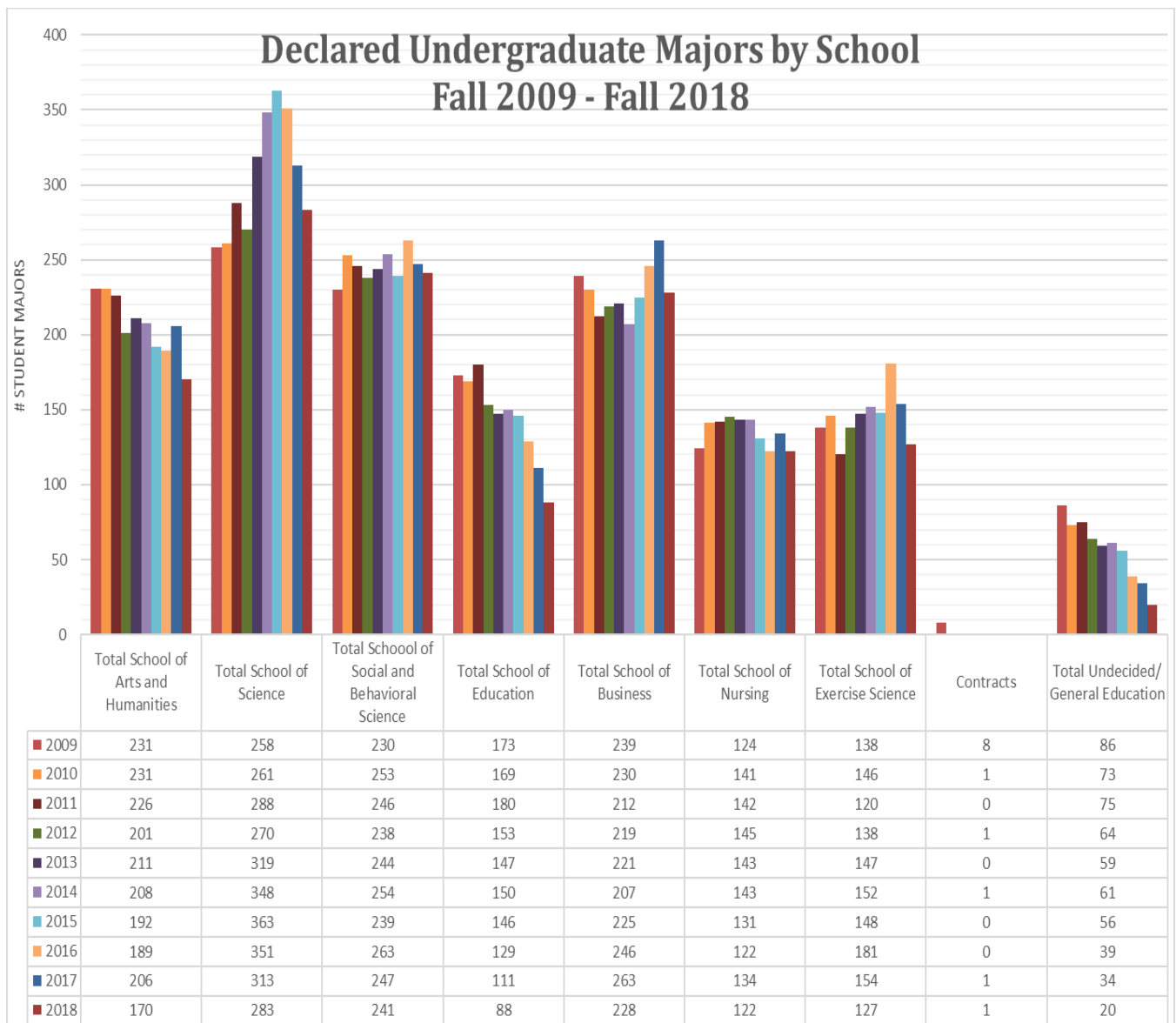


## Declared Academic First and Second Majors by School- Fall 2018

		2018				Previous Most Recent 5 Years			
Major	Track	Majors	2nd Majors	Total Majors	% of Total	Majors	2nd Majors	Total Majors	% of Total
<b>School of Fine Arts and Humanities</b>									
<b>Art Total</b>		28	2	30	2.3%	181	37	218	2.9%
	Pre Art Therapy	1		1	0.1%	13	10	23	0.3%
	Education			0	0.0%	0	0	0	0.0%
	Graphic Design	10		10	0.8%	103	0	103	1.4%
	Painting/Drawing/Print-Making	5		5	0.4%	16	0	16	0.2%
	Studio	6		6	0.5%	18	7	25	0.3%
	Ceramics			0	0.0%	0	0	0	0.0%
	Intermedia	1		1	0.1%	6	0	6	0.1%
	Photography			0	0.0%	18	0	18	
<b>Arts Administration</b>		2	2	4	0.3%	32	2	34	0.5%
	AAArt	1		1	0.1%	5	0	5	0.1%
	AAMusic	0		0	0.0%	18	0	18	0.2%
	AATheatre	1		1	0.1%	9	0	9	0.1%
<b>English Total</b>		23	6	29	2.3%	140	52	192	2.6%
	English	4	6	10	0.8%	37	41	78	1.0%
	Education			0	0.0%	0	0	0	0.0%
	Literature	5		5	0.4%	22	0	22	0.3%
	Writing	14		14	1.1%	81	0	81	1.1%
<b>Gender Studies</b>		1	11	12	0.9%	8	49	57	0.8%
<b>History</b>		15	6	21	1.6%	86	37	123	1.6%
<b>International Studies</b>		6	4	10	0.8%	26	13	39	0.5%
<b>Music: Total</b>		40	2	42	3.3%	174	19	193	2.6%
	Music	13	2	15	1.2%	69	19	88	1.2%
	Education	27		27	2.1%	105	0	105	1.4%
<b>Philosophy</b>		2	1	3	0.2%	14	19	33	0.4%
<b>Philosophy and Religion</b>		0		0	0.0%	1	1	2	0.0%
<b>Religion/Religious Studies</b>		3	1	4	0.3%	24	6	30	0.4%
<b>Theatre Arts: Total</b>		15	0	15	1.2%	78	7	85	1.1%
	Musical Theatre	5		5	0.4%	44	2	46	0.6%
	Theatre Arts	9		9	0.7%	31	4	35	0.5%
	Pre Drama Therapy	1		1		3	0	3	
<b>Total School of Arts and Humanities</b>		<b>135</b>	<b>35</b>	<b>170</b>	<b>13.3%</b>	<b>764</b>	<b>242</b>	<b>1006</b>	<b>13.4%</b>

		2018				Previous Most Recent 5 Years			
Major	Track	Majors	2nd Majors	Total Majors	% of Total	Majors	2nd Majors	Total Majors	% of Total
<b>School of Science</b>									
Biology		98	2	100	7.8%	498	7	505	6.7%
Chemistry		10		10	0.8%	140	21	161	2.1%
Chemical Hygiene				0	0.0%	9	0	9	
Biochemistry		47		47	3.7%	215	4	219	
Computer Info. Science		7		7	0.5%	26	3	29	0.4%
Computer Science		20	1	21	1.6%	110	7	117	1.6%
Environmental Studies		15		15	1.2%	80	0	80	1.1%
Mathematics		5	2	7	0.5%	35	35	70	0.9%
Pharmacy		4		4	0.3%	21	0	21	
Physics Major/Engineering 3/2 program		9		9	0.7%	140	1	141	1.9%
Physics		61	2	63	4.9%	290	14	304	4.1%
Geophysics		0		0	0.0%	38	0	38	
<b>Total School of Science</b>		<b>276</b>	<b>7</b>	<b>283</b>	<b>22.1%</b>	<b>1602</b>	<b>92</b>	<b>1694</b>	<b>22.6%</b>
<b>School of Social Science</b>									
<b>Communication Studies</b>		40	3	43	3.4%	179	30	209	2.8%
	Communication	26	3	29	2.3%	94	18	112	1.5%
	Public Relations	6	0	6	0.5%	59	11	70	0.9%
	Media Studies	8	0	8	0.6%	26	1	27	0.4%
Criminal Justice		66	6	72	5.6%	291	45	336	4.5%
Health Science		30	1	31	2.4%	31	1	32	
Political Science		19	4	23	1.8%	139	24	163	2.2%
Psychology		50	7	57	4.5%	384	46	430	5.7%
Social Science				0	0.0%	0	0	0	0.0%
Sociology		2	3	5	0.4%	35	27	62	0.8%
Social Justice		6	4	10	0.8%	14	4	18	
<b>Total School of Social Science</b>		<b>213</b>	<b>28</b>	<b>241</b>	<b>18.8%</b>	<b>1073</b>	<b>176</b>	<b>1250</b>	<b>16.7%</b>
<b>School of Business</b>									
<b>Business Total</b>		193	12	205	16.0%	1012	47	1059	14.1%
	Accounting	32		32	2.5%	223	5	228	3.0%
	Finance			0	0.0%	0	0	0	0.0%
	Business Admin	90	5	95	7.4%	338	23	361	4.8%
	Management	13	2	15	1.2%	129	6	135	1.8%
	Marketing	24	3	27	2.1%	123	9	132	1.8%
	International Business			0	0.0%	25	3	28	0.4%
	Sport Business	34	2	36	2.8%	174	1	175	
	5 year MBA			0	0.0%	0	0	0	0.0%
<b>Economics</b>		11	12	23	1.8%	64	39	103	1.4%
<b>Total School of Business</b>		<b>204</b>	<b>24</b>	<b>228</b>	<b>17.8%</b>	<b>1076</b>	<b>86</b>	<b>1162</b>	<b>15.5%</b>

		2018				Previous Most Recent 5 Years			
Major	Track	Majors	2nd Majors	Total Majors	% of Total	Majors	2nd Majors	Total Majors	% of Total
<b>School of Education</b>									
	Elementary	47		47	3.7%	368	4	372	5.0%
	Secondary	35	2	37	2.9%	294	17	311	4.1%
	Educational Studies	4		4	.3%				
<b>Total School of Education</b>		<b>86</b>	<b>2</b>	<b>88</b>	<b>6.9%</b>	<b>662</b>	<b>21</b>	<b>683</b>	<b>9.1%</b>
<b>School of Exercise Science</b>									
	Physical Education	0	3	3	0.2%	10	15	25	0.3%
	Exercise Science	80	1	81	6.3%	513	6	519	6.9%
	Athletic Training	43		43	3.4%	240	1	241	3.2%
<b>Total School of Exercise Science</b>		<b>123</b>	<b>4</b>	<b>127</b>	<b>9.9%</b>	<b>763</b>	<b>22</b>	<b>785</b>	<b>10.5%</b>
<b>School of Nursing</b>		<b>122</b>	<b>0</b>	<b>122</b>	<b>9.5%</b>	<b>671</b>	<b>2</b>	<b>673</b>	<b>9.0%</b>
	Nursing	72		72		258	0	258	
	Pre-Nursing	50		50		129	0	129	
<b>Contract Major</b>		<b>1</b>		<b>1</b>	<b>0.1%</b>	<b>2</b>	<b>0</b>	<b>2</b>	<b>0.0%</b>
<b>Undeclared/Undecided</b>		<b>20</b>		<b>20</b>	<b>1.6%</b>	<b>249</b>	<b>0</b>	<b>249</b>	<b>3.3%</b>
<b>Total Undergraduate Declared Majors</b>		<b>1180</b>	<b>100</b>	<b>1280</b>	<b>100.0%</b>	<b>6862</b>	<b>641</b>	<b>7504</b>	<b>100.0%</b>



Source: WVWC Student Records as of the Census date

## West Virginia Wesleyan College

### Student Organizations

#### (In Alphabetical Order)

Alpha Delta Pi Sorority	Hallom Math Honorary	Religious Life Council
Alpha Gamma Delta Sorority	Honors Program	Senior Class Council
Alpha Lambda Delta Honorary	Interfraternity Council (IFC)	Sigma Alpha Iota
Alpha Phi Alpha	International Student Organization	Sigma Tau Delta
Alpha Phi Omega	Interfaith	Sigma Theta Epsilon
Alpha Psi Omega	Jazz Ensemble	Sigma Theta Tau
Alpha Sigma Phi	Junior Class Council	Student Nurses of Wesleyan (SNOW)
Alpha Xi Delta Sorority	Just Stand	Sociology Club
Beta Beta Beta	Kappa Delta Pi	Sophomore Class Council
Black Student Union	Kappa Alpha Order	Student Art League
Bobcat Entertainment	Lambda Pi Eta Communication Honorary	Student Athlete Advisory Committee
Catholic Campus Ministry	Love Your Melon	Student Athletic Trainers' Club
Cheerleading	Omega Psi Phi Fraternity	Student Education Association
Chi Phi Fraternity	Omicron Delta Epsilon	Student Senate
College Republicans	Omicron Delta Kappa	Theta Chi Fraternity
Collegiate 4-H Club	Order of Omega	Theta Xi Fraternity
Concentus Vocum	Panhellenic Association	WE LEAD
Concert Band	Pharos	Wesleyan Ambassadors
Concert Chorale	Phi Kappa Phi	Wesleyan Singers
Delta Mu Delta	Phi Mu Alpha Sinfonia	WVWC-C92FM
ENACTUS	Phi Sigma Tau	Young Democrats
Engineering/Physics Club	Pre-Law Society	Zeta Tau Alpha
Fellowship of Christian Athletes	Pre-Med Society	
Freshman Council	PRISM	
Gamma Sigma Alpha	Psi Chi	

Source: WVWC Web page 05-2017

## Fall 2018 All Student Athletes by Scholarship Status

Men's Program's	Number of Student Athletes	Scholarship Student Athletes	Walk On Student Athletes	% Scholarship
Baseball	54	33	21	61%
M. Basketball	22	14	8	64%
M. Cross Country and Track*	40	21	19	53%
Football	112	66	46	59%
Golf	11	9	2	82%
M. Soccer	39	17	22	44%
M. Swimming	14	5	9	36%
M. Tennis	18	9	9	50%
<b>Totals</b>				
% of FT Undergraduate Men	310	174	136	56%
# of FT Undergraduate Men	58.7%	33.0%	25.8%	

Women's Programs	Number of Student Athletes	Scholarship Student Athletes	Walk On Student Athletes	% Scholarship
W. Basketball	21	20	1	95%
W. Cross Country and Track*	35	23	12	66%
W. Lacrosse	23	12	11	52%
W. Soccer	48	34	14	71%
Softball	29	10	19	34%
W. Swimming	17	11	6	65%
W. Tennis	7	6	1	86%
Volleyball	28	22	6	79%
W. Golf	5	5	0	100%
W. Acrobatics and Tumbling	24	15	9	63%
<b>Totals</b>	<b>237</b>	<b>158</b>	<b>79</b>	<b>67%</b>
% FT Undergraduate Women	37.4%	24.9%	12.5%	
# of FT Undergraduate Women	634			
<b>All Student Athlete Totals</b>	<b>547</b>	<b>332</b>	<b>215</b>	<b>61%</b>
% of Total Students	<b>47.1%</b>	<b>28.6%</b>	<b>18.5%</b>	
# Total FT Students	<b>1162</b>			

\* This number does not include those athletes who also participated in another sport during the year.

Source: WVWC Student Records as of the census date each year



## Student Outcomes



## Institutional Yearly Retention Rates

### First Time Full-time Freshmen Rate

Fall to Fall Year of Retention*	Fall 08 to Fall 09	Fall 09 to Fall 10	Fall 10 to Fall 11	Fall 11 to Fall 12	Fall 12 to Fall 13	Fall 13 to Fall 14	Fall 14 to Fall 15	Fall 15 to Fall 16	Fall 16 to Fall 17	Fall 17 to Fall 18	Fall 2018 Projection	Previous 3 yr. Ave.	Strategic Planning Long Term Goal
Freshmen Cohort for First Year Retention	382	399	371	405	404	471	415	392	387	366			
Freshmen to Sophomore (Year 1)	74.6%	69.9%	67.3%	64.0%	65.1%	73.0%	71.8%	70.4%	73.6%	70.5%	70.7%	72.0%	75%
Sophomore to Junior (Year 2)	87.5%	82.8%	80.0%	82.2%	87.3%	88.6%	82.3%	87.3%	85.1%	81.4%	85.3%	83.3%	85%
Junior to Senior (Year 3)	96.1%	94.2%	96.6%	91.9%	92.4%	90.2%	88.9%	92.2%	90.5%	91.9%	91.6%	90.7%	95%

\* These numbers only reflect retention for students who originally entered WVWC as First-time Full-time Freshmen

\*\* If 5 2017-18 Graduates are included in the rate the Junior to Senior retention/completion rate is 94.0%

### Transfer Student Retention Rates

Fall to Fall Year of Retention*	Fall 08 to Fall 09	Fall 09 to Fall 10	Fall 10 to Fall 11	Fall 11 to Fall 12	Fall 12 to Fall 13	Fall 13 to Fall 14	Fall 14 to Fall 15	Fall 15 to Fall 16	Fall 16 to Fall 17	Fall 17 to Fall 18	Previous 3 yr. Ave.
Transfer Entering Cohort	42	60	32	60	61	39	40	49	42	32	
(Year 1)	87.2%	80.0%	78.1%	60.0%	54.1%	74.4%	81.5%	77.6%	64.3%	87.5%	74.0%
(Year 2)	59.0%	67.6%	64.6%	60.0%	77.8%	54.5%	79.3%	75.0%	71.1%	70.4%	74.7%
(Year 3)	38.1%	30.4%	39.1%	38.7%	15.4%	21.4%	5.8%	30.4%	35.7%	25.9%	20.3%

\* These numbers only reflect retention for students who originally entered WVWC as Transfer Students. Student who have readmitted to the institution are included in their original cohort for retention purposes.

\*\* If 2016-17 Graduates and are included in the rates, retention/completion rate is first year %, second year %, third year %

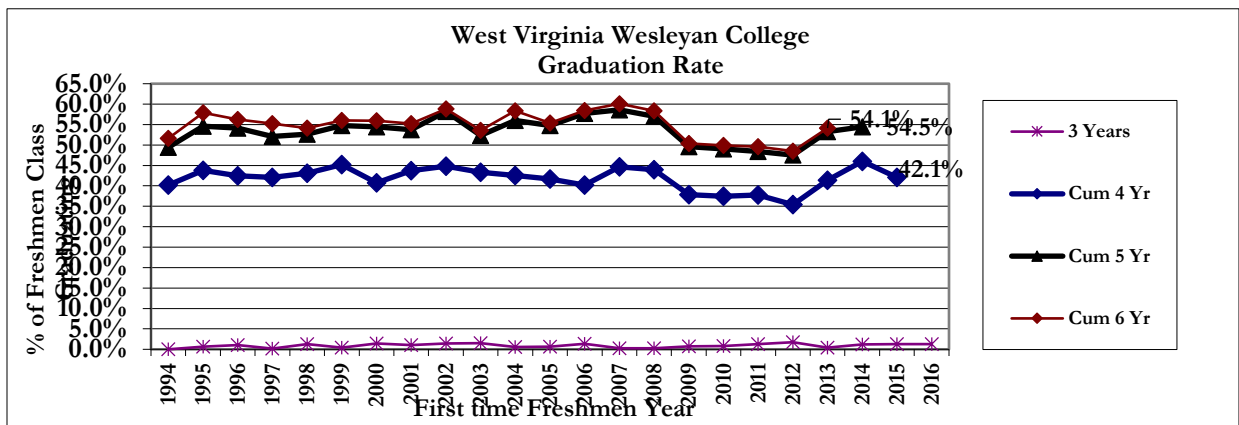
West Virginia Wesleyan College

First Time Full Time Freshmen Yearly Retention and Graduation Rates

## 2009 to Present

First-Time Full-time Freshmen and Year Entering College		Returning for:								Graduating in:				Total	Total Grads %
		Year 2	%	Year 3	%	Year 4	%	Year 5	Year 6	3 yrs or less	4 yrs	5 yrs	> 5		
2009	399	279	69.9%	223	55.9%	206	51.6%	51	2	3	148	47	3	201	50.4%
2010	371	250	67.4%	211	56.9%	196	52.8%	41	5	3	136	43	3	185	49.9%
2011	405	259	64.0%	225	55.6%	206	50.9%	36	7	5	148	43	5	201	49.6%
2012	404	263	65.1%	234	57.9%	209	51.7%	50	5	7	136	49	4	196	48.5%
2013	471	344	73.0%	283	60.1%	261	55.4%	51	2	2	193	56	4	255	54.1%
2014	415	298	71.8%	261	62.9%	231	55.7%	28	5	5	186	35			
2015	392	276	70.4%	235	59.9%	216	55.1%			5	160				
2016	387	285	73.6%	232	59.9%		54.0%			5					
2017	366	258	70.6%												
2018	322														
Recent 3 Yr Average	382	286	71.9%	260	61.0%	236	54.3%	46	6	4	172	49	4	194	49.3%

Graduation Rates						
First Time Freshmen Year	3 Years	Cum 4 Yr	5 years	Cum 5 Yr	> 5	Cum 6 Yr
2007	0.2%	44.6%	14.0%	58.6%	1.5%	60.1%
2008	0.3%	44.0%	13.1%	57.1%	1.3%	58.4%
2009	0.8%	37.8%	11.8%	49.6%	0.8%	50.4%
2010	0.8%	37.5%	11.6%	49.1%	0.8%	49.9%
2011	1.2%	37.8%	10.6%	48.4%	1.2%	49.6%
2012	1.7%	35.4%	12.1%	47.5%	1.0%	48.5%
2013	0.4%	41.4%	11.9%	53.3%	0.8%	54.1%
2014	1.2%	46.0%	8.4%	54.5%		
2015	1.3%	42.1%				
2016	1.3%					
Recent 3 Yr Average	0.9%	41.0%	11.6%	49.9%	1.0%	49.3%



Source: WVWC Student records as of the census date each year

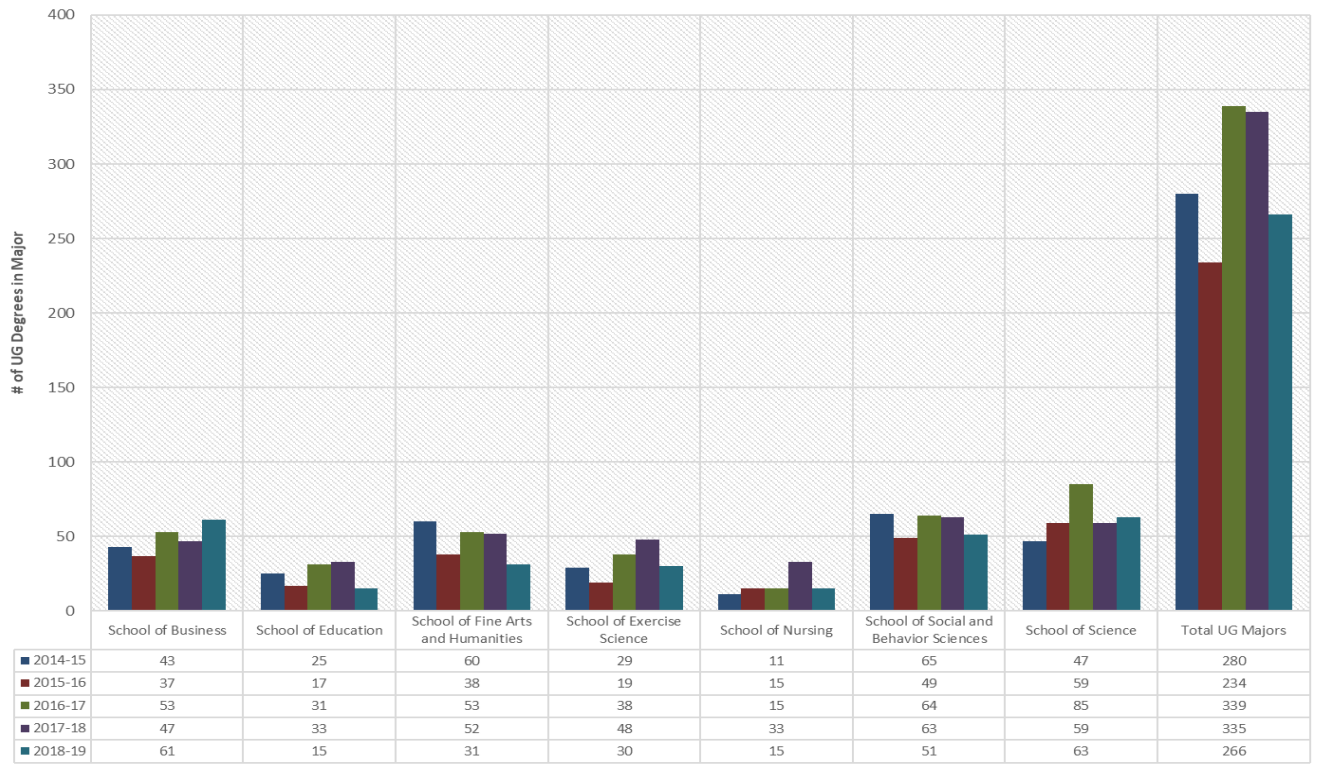
## Degrees Awarded by Major Field of Study

		2018				Previous 5 year Total			
		July 1, 2018 through June 30, 2019				July 1, 2014 through June 30, 2018			
Major	Division	Majors	2nd or 3rd Majors	Total Majors	%of All	Majors	2nd or 3rd Majors	Total Majors	%of All
<b>Fine Arts and Humanities</b>									
<b>Art Total</b>		3	0	3	1.1%	42	4	49	3.5%
	Graphic Design	1		1	0.4%	20	0	20	
	Painting/Drawing	1		1	0.4%	9	0	9	
	Studio	1		1	0.4%	3	0	3	
	Intermedia	0		0	0.0%	3	0	3	
	Photography	0		0	0.0%	4	0	0	
	Pre Art Therapy	0		0	0.0%	6	0	6	
<b>Art Administration</b>		1		1	0.4%	8	0	8	0.6%
<b>Theatre Arts</b>		3		3	1.1%	7	2	9	0.6%
<b>English: Total</b>		4	1	5	1.9%	44	17	61	4.3%
	Literature	1		1	0.4%	15	0	15	
	Writing	3		3	1.1%	29	0	29	
<b>Gender Studies</b>		0	2	2	0.8%	5	12	17	1.2%
<b>History</b>		4	1	5	1.9%	34	10	44	3.1%
<b>Music: Total</b>		5	2	7	2.6%	29	2	31	2.2%
	Music:	3	2	5	1.9%	14	2	16	
	Education	2		2	0.8%	15	0	15	
<b>Music Theatre</b>		0		0	0.0%	5	1	6	0.4%
<b>Philosophy</b>		0	1	1	0.4%	4	4	8	0.6%
<b>Religion/Religious Studies</b>		0	0	0	0.0%	0	0	0	0.0%
<b>International Studies</b>		0	0	0	0.0%	5	0	5	0.4%
<b>Christian Education</b>		2	1	3	1.1%	7	4	11	0.8%
<b>Total Arts and Humanities</b>		<b>22</b>	<b>8</b>	<b>30</b>	<b>11.3%</b>	<b>194</b>	<b>56</b>	<b>250</b>	<b>17.6%</b>

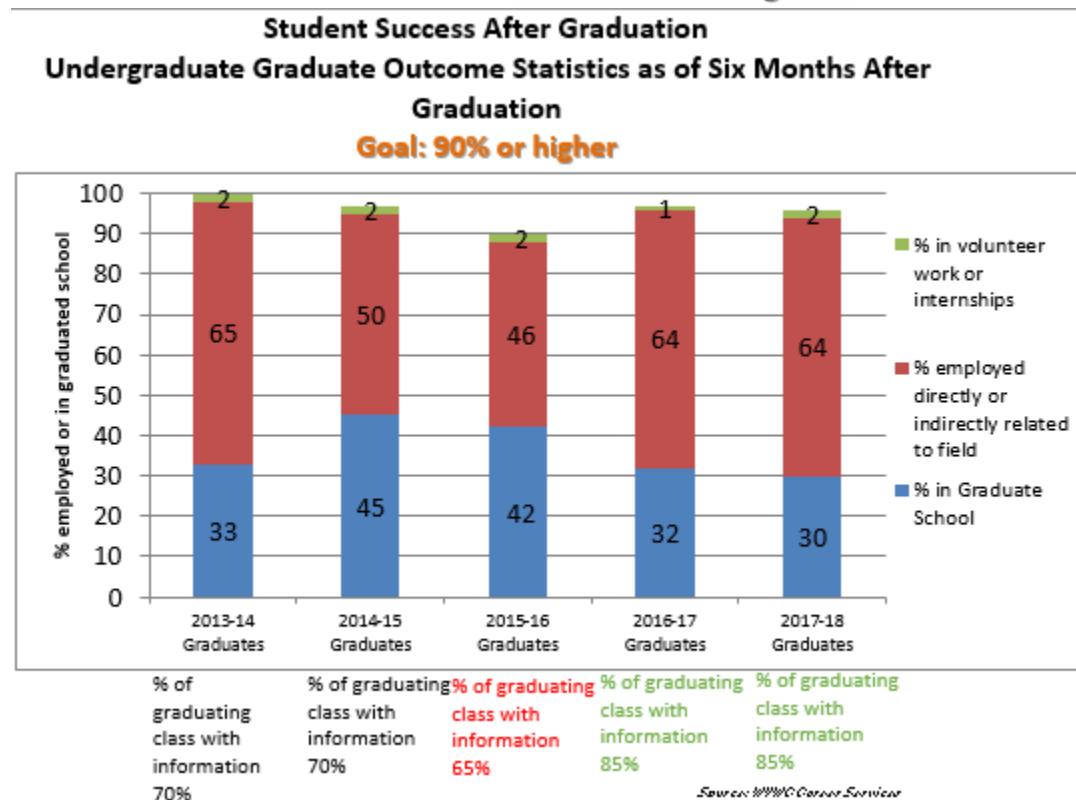
		2019				Previous 5 year Total			
		July 1, 2018 through June 30, 2019				July 1, 2014 through June 30, 2018			
Major	Division	Majors	2nd or 3rd Majors	Total Majors	%of All	Majors	2nd or 3rd Majors	Total Majors	%of All
<b>School of Science</b>									
Biology		16	0	16	6.0%	71	0	71	5.0%
Biochemistry		11	0	11	4.1%	18	0	18	1.3%
Chemistry		2	0	2	0.8%	37	1	38	2.7%
Material Chemistry		0	0	0	0.0%	1	0	1	0.1%
Computer Info. Science		3	1	4	1.5%	5	1	6	0.4%
Computer Science		5	0	5	1.9%	11	0	11	0.8%
Environmental Science/Studies		5	0	5	1.9%	15	0	15	1.1%
Mathematics		2	1	3	1.1%	11	6	17	1.2%
Pharmacy		0	0	0	0.0%	0	0	0	0.0%
Physics		16	0	16	6.0%	60	0	60	4.2%
GeoPhysics		1	0	1	0.4%	2	0	2	0.1%
<b>Total Science</b>		<b>61</b>	<b>2</b>	<b>63</b>	<b>23.7%</b>	<b>231</b>	<b>8</b>	<b>239</b>	<b>16.8%</b>
<b>School of Social Science</b>									
Communication Studies		5	0	5	1.9%	24	6	30	2.1%
Media Studies		3	0	3	1.1%	3	0	3	0.2%
Public Relations		2	0	2	0.8%	20	1	21	1.5%
Criminal Justice		12	2	14	5.3%	54	8	62	4.4%
Health Science		4	0	4		3	0	3	0.2%
Political Science		5	0	5	1.9%	36	5	41	2.9%
Psychology		13	1	14	5.3%	115	7	122	8.6%
Sociology		1	0	1	0.4%	17	8	25	1.8%
Social Justice		3	0	3	1.1%	1	0	1	0.1%
<b>Total Social Science</b>		<b>48</b>	<b>3</b>	<b>51</b>	<b>19.2%</b>	<b>273</b>	<b>35</b>	<b>308</b>	<b>21.7%</b>
<b>School of Education</b>									
<b>Education: Total</b>		<b>15</b>	<b>0</b>	<b>15</b>	<b>5.6%</b>	<b>121</b>	<b>7</b>	<b>128</b>	<b>9.0%</b>
	Elementary	8	0	8	3.0%	77	0	77	5.4%
	Secondary	4	0	4	1.5%	41	6	47	3.3%
	Educational Studies	3	0	3		3	1	4	0.3%

		2019				Previous 5 year Total			
		July 1, 2018 through June 30, 2019				July 1, 2014 through June 30, 2018			
Major	Division	Majors	2nd or 3rd Majors	Total Majors	%of All	Majors	2nd or 3rd Majors	Total Majors	%of All
<b>School of Business</b>									
<b>Business: Total</b>		40	4	44	13.0%	195	5	200	14.7%
	Accounting	12	1	13	3.8%	53	0	53	3.9%
	Finance			0	0.0%	0	0	0	0.0%
	Business Administration	9	1	10	2.9%	52	4	56	4.1%
	International Business		1	1	0.3%	17	0	17	1.3%
	Management	11	1	12	3.5%	34	1	35	2.6%
	Marketing	5		5	1.5%	26	0	26	1.9%
	Sports Business	3		3	0.9%	13	0	13	1.0%
<b>Economics</b>		7	2	9	2.7%	9	14	23	1.7%
<b>Total School of Business</b>		<b>47</b>	<b>6</b>	<b>53</b>	<b>15.6%</b>	<b>204</b>	<b>19</b>	<b>223</b>	<b>16.4%</b>
<b>School of Exercise Science</b>		<b>38</b>	<b>0</b>	<b>38</b>	<b>11.2%</b>	<b>130</b>	<b>6</b>	<b>136</b>	<b>10.0%</b>
	Physical Education:	2		2	0.6%	10	6	16	1.2%
	Exercise Science	27		27	8.0%	99	0	99	7.3%
	Athletic Training	9		9	2.7%	21	0	21	1.5%
<b>School of Nursing</b>		<b>15</b>		<b>15</b>	<b>4.4%</b>	<b>100</b>	<b>0</b>	<b>100</b>	<b>7.4%</b>
<b>Contract Major</b>				<b>0</b>	<b>0.0%</b>	<b>2</b>	<b>0</b>	<b>2</b>	<b>0.1%</b>
<b>Total Undergraduate Student Majors</b>		<b>300</b>	<b>39</b>	<b>339</b>	<b>100%</b>	<b>1238</b>	<b>119</b>	<b>1357</b>	<b>100%</b>
<b>Number of Students with two or more Majors</b>				39	13.0%		0	119	9.6%
<b>Number Undergraduate Degrees Awarded</b>				300			0	1238	
<b>5 year Undergraduate/MBA</b>		8	6 Broken into specialties above			41	41 Broken into specialties above		
<b>5 year Undergraduate/MED</b>		6	6 Broken into specialties above			21	21 Broken into specialties above (5 years)		
<b>MBA</b>		13	Includes 5 year			82	Includes 5 year		
<b>MED</b>		11	Includes 5 year			60	Includes 5 year		
<b>MSAT</b>		7				32	Includes 5 year		
<b>MSN</b>		31				27	Includes 5 year		
<b>MFA</b>		6				30	2 Year		

## Undergraduate Graduating Degree Majors by School 2014-2015 to 2018-2019



**Student Success after Graduation**  
**Graduate Outcome Statistics as of Six Months after Graduation**  
**Goal: 90% or higher**



UG DEGREE HOLDERS ENROLLED IN GRADUATE PROGRAMS BY TYPE (PERCENTAGES BASED ON TOTAL # IN GRAD SCHOOL – 85 )					
	#	%		#	%
Medical & Health Related	34	40%	Law School	7	8%
Business School	8	10%	Arts and Sciences	1	13%
Education	2	2%	Engineering	4	5%
Other	10	12%	No Information	8	10%

**Partial list of Graduate Schools attending:**

Columbia University, University of Virginia, West Virginia University, University of Delaware, University of Maryland, Ohio University, University of Kentucky, University of Virginia, West Virginia Wesleyan College, Rutgers University, St. Louis University, Marshall University, Smith University, Radford University, Shenandoah University, St John's University, William and Mary Law School, Wesleyan Theological Seminary, West Virginia School of Osteopathic Medicine

**Partial List of Employers:**

Amazon, Air & Waste Management Association, Atlantic Aviation, Barbour County Schools, Berkeley County Schools, Big Timber Brewing Company, Braxton County Schools, Charleston Cancer Center, College of William and Mary, Davis Medical Center, Gateway Grizzlies Baseball, Global Premier Soccer, Hayes Software Systems, Insight Global, Jefferson County Schools, LEAM Drilling Services, Lewis County Schools, Loudoun County Schools, Orion Strategies, Pittsburgh Pirates, Recovery Centers of America, Snowshoe Mountain, Stonewall Resorts, The Walt Disney Company, Technology Service Corporation, Thrasher Group, United Hospital Center, West Virginia University Medicine, FBI, Pivot Physical Therapy,



## Faculty and Staff



## Fall 2018 Employee Summary

### Number of staff by employment status and occupational category: Fall 2018

Occupational Category	# of Full-time Employees	# of Part-time Employees	Full-Time Equivalent Employees
Total Number of Staff	234	123	275
Instructional Staff	69	61	89
Library Staff	3	0	3
Student and Academic Affairs and other Educational Services	8	11	12
Management	30	0	30
Business and Finance	7	0	7
Computer Engineering and Science	8	1	8
Community, Social Service, Legal, Arts, Design, Entertainment, and Sports and Media	38	13	42
Health Care Practitioners	4	7	6
Service Occupations	31	7	33
Sales and Related Occupations	1	0	1
Office and Administrative Support	17	6	19
Natural Resources, Construction, and Maintenance	16	0	16
Production, Transportation and Material Moving	2	0	2
Graduate Assistants	0	17	6

NOTE: Full-time-equivalent (FTE) staff is calculated by summing the total number of full-time staff and adding one third of the total number of part-time staff.

Source: IPEDS Human Resources Survey (Employees as of November 1, 2018)

## Faculty Profile

Source: Academic Dean's office using the AAUP guidelines. These will differ slightly from the IPEDS Humane Resources Guidelines listed on the previous page. In the AAUP guidelines, a staff member who teaches will be counted on this report as part-time faculty. In the IPEDS report a staff member can only count in their primary employment category.

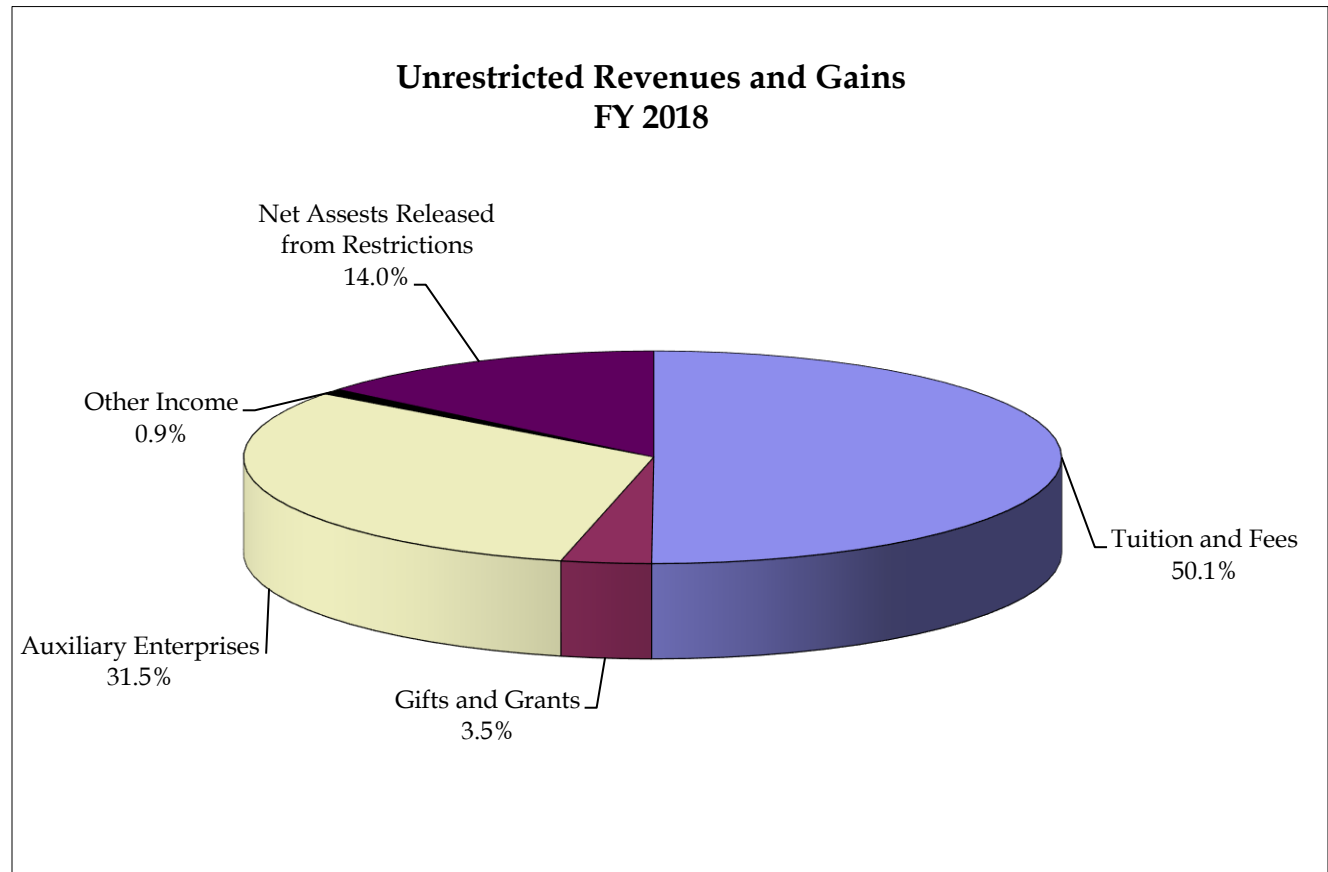
[illegible]

	Fall Full-time Equivalent Faculty (FTE Faculty)				
	2014	2015	2016	2017	2018
<b>Total Faculty</b>	106.7	111.3	113.0	100.3	90.0
	2014	2015	2016	2017	2018
<b>Undergraduate</b>	13.7:1	13.7:1	12.8:1	12.9:1	13.1:1

## Financials and Fund Raising



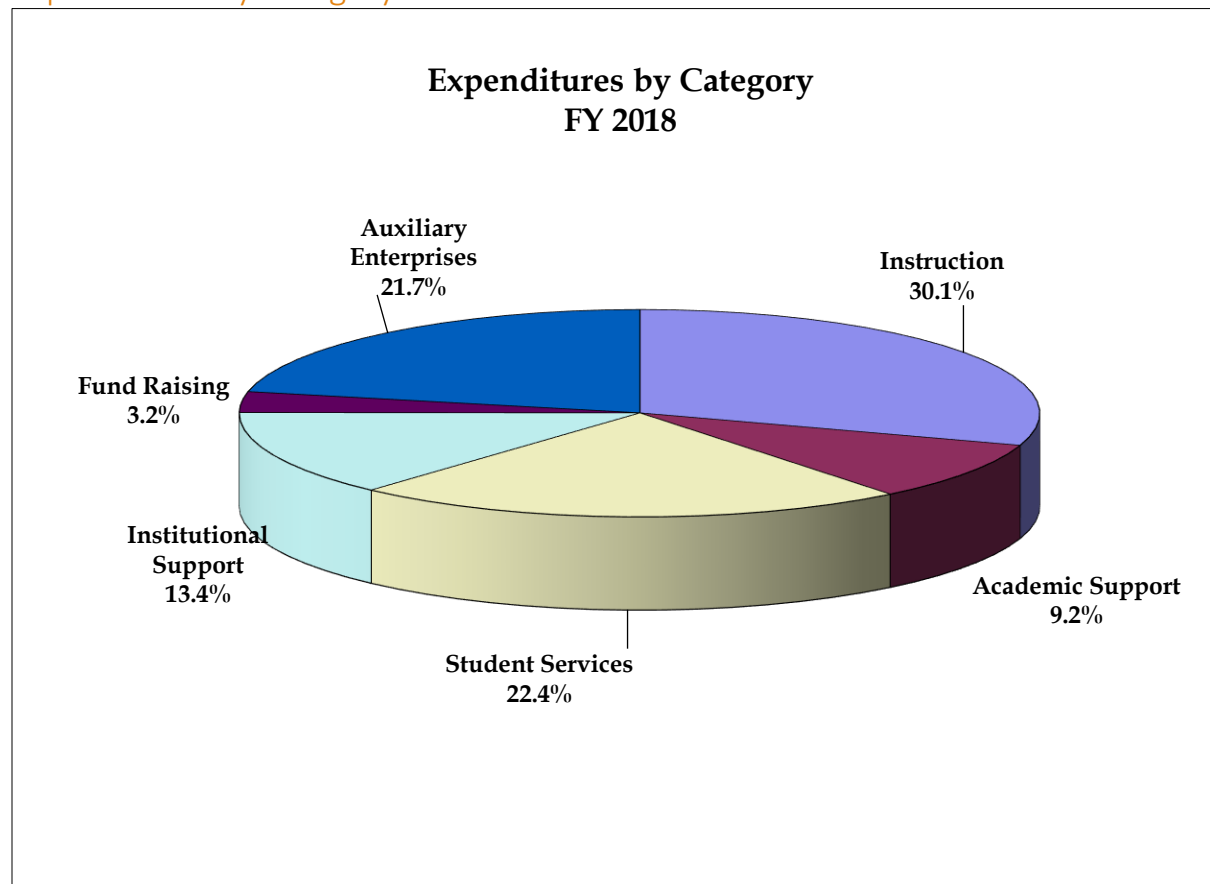
## Unrestricted Revenues and Gains



(Revenues in Million Dollars)						
	FY 2014	FY 2015	FY 2016	FY 2017	FY 2018	% Change 2018 vs 2014
Tuition and Fees	\$14.83	\$15.87	\$15.93	\$16.41	\$15.93	7.39%
Gifts and Grants	\$3.18	\$2.77	\$1.26	\$2.30	\$1.13	-64.42%
Auxiliary Enterprises	\$9.82	\$10.36	\$10.47	\$10.59	\$10.02	2.05%
Investment Income	\$0.35	\$0.44	\$0.32	\$0.24	\$0.27	-22.79%
Net Assets Released from Restrictions	\$4.06	\$4.59	\$5.74	\$6.26	\$4.45	9.50%
<b>Total Current Funds Revenues</b>	<b>\$32.25</b>	<b>\$34.03</b>	<b>\$33.72</b>	<b>\$35.80</b>	<b>\$31.80</b>	<b>-1.37%</b>
Academic Year FTE Enrollment	1423	1441	1469	1359	1,349	-5.20%

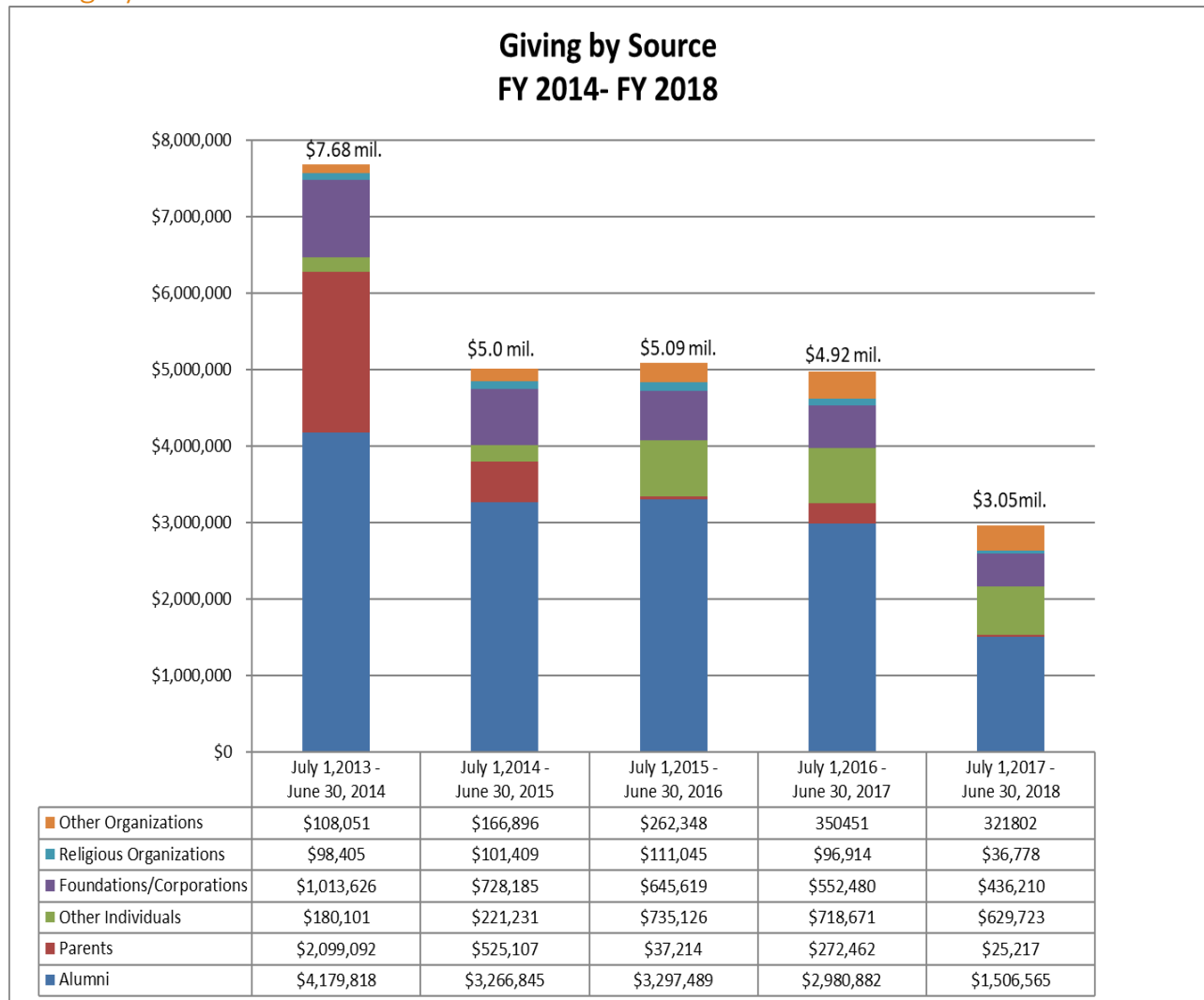
Source: WVWC Audited Financial Statements

## Expenditures by Category



(Expenditures in Million Dollars)						
	FY 2014	FY 2015	FY 2016	FY 2017	FY 2018	% Change 2018 vs 2014
Instruction	\$9.00	\$9.27	\$9.70	\$10.78	\$9.37	4.09%
Academic Support	\$2.41	\$2.87	\$3.36	\$3.21	\$2.88	19.41%
Student Services	\$6.44	\$6.71	\$6.89	\$7.27	\$6.79	5.47%
Institutional Support	\$4.32	\$4.09	\$5.00	\$5.04	\$4.17	-3.50%
Fund Raising	\$1.12	\$1.09	\$1.15	\$1.10	\$1.01	-10.09%
Auxiliary Enterprises	\$6.56	\$6.97	\$6.83	\$7.06	\$6.76	2.99%
<b>Total Current Funds Expenditures</b>	<b>\$29.86</b>	<b>\$31.00</b>	<b>\$32.93</b>	<b>\$34.46</b>	<b>\$30.98</b>	<b>3.75%</b>
Academic Year FTE Enrollment	1,423	1,441	1,469	1,359	1,349	-5.2%

Source: WVWC Audited Financial Statements



Source: WVWC VSE Report for each Fiscal Year

## West Virginia Wesleyan College Benchmark Institutions

Criteria Based Benchmark Institutions from 2011 Updated with 2016-17 IPEDS Data																	
UnitID	Institution Name	State		Grand total UG Students (EF2017A)	Grand total GR Students (EF2017A)	Grand total All Students (EF2017A)	Estimated FTE Enrollment 2016-17	Tuition and fees - Total (F1617 F2)	Net tuition per FTE Enrollment FY 2016-17	Value of endowment assets at the end of the fiscal year (F1617 F2)	Total expenses (F1617 F2)	Full-time retention rate 2017 (EF2017D)	Student-to-faculty ratio (EF2017D)	FTFT Freshmen - financial aid cohort (SFA1617)	Total amount of institutional grant aid awarded to full-time first-time undergraduates (SFA1617)	Fall 2016 Freshmen Net tuition and Fees	2016-17 Published Tuition and Fees
210571	Albright College	PA	Baccalaureate Colleges: Arts & Sciences Focus	2015	21	2036	2318	\$ 32,867,009	\$ 14,179	\$ 67,742,285	\$ 54,428,540	69	15	596	\$ 15,862,102	\$ 14,930	\$ 41,544
156213	Asbury University	KY	Master's Colleges & Universities: Small Programs	1733	257	1990	1590	\$ 22,823,352	\$ 14,354	\$ 46,168,426	\$ 36,193,853	85	13	306	\$ 3,631,328	\$ 16,763	\$ 28,630
237181	Bethany College	WV	Baccalaureate Colleges: Arts & Sciences Focus	601	27	628	614	\$ 6,304,771	\$ 10,268	\$ 42,310,780	\$ 23,895,250	70	11	164	\$ 2,627,408	\$ 11,675	\$ 27,696
231581	Bridgewater College	VA	Baccalaureate Colleges: Arts & Sciences Focus	1882	7	1889	1958	\$ 21,007,236	\$ 10,729	\$ 89,237,902	\$ 47,639,127	75	14	600	\$ 13,934,556	\$ 9,366	\$ 32,590
219806	Carson-Newman University	TN	Master's Colleges & Universities: Medium Programs	1690	824	2514	2676	\$ 27,604,872	\$ 10,316	\$ 57,477,709	\$ 42,175,992	70	12	505	\$ 7,151,620	\$ 12,198	\$ 26,360
219833	Christian Brothers University	TN	Master's Colleges & Universities: Medium Programs	1791	366	2157	1992	\$ 25,619,548	\$ 12,861	\$ 38,590,347	\$ 58,570,742	80	13	336	\$ 6,052,757	\$ 12,846	\$ 30,860
232025	Emory & Henry College	VA	Baccalaureate Colleges: Arts & Sciences Focus	1000	226	1226	1091	\$ 15,223,450	\$ 13,954	\$ 88,786,994	\$ 37,247,227	76	11	284	\$ 6,562,733	\$ 10,592	\$ 33,700
232089	Ferrum College	VA	Baccalaureate Colleges: Diverse Fields	1137		1137	1125	\$ 16,626,643	\$ 14,779	\$ 51,192,714	\$ 33,232,447	48	14	451	\$ 7,777,127	\$ 14,671	\$ 31,915
220215	Freed-Hardeman University	TN	Master's Colleges & Universities: Small Programs	1471	501	1972	1733	\$ 15,994,636	\$ 9,229	\$ 51,976,004	\$ 35,089,161	80	13	324	\$ 4,380,420	\$ 7,980	\$ 21,500
212656	Geneva College	PA	Master's Colleges & Universities: Medium Programs	1417	181	1598	1597	\$ 21,208,829	\$ 13,280	\$ 36,976,463	\$ 35,321,136	80	14	289	\$ 3,683,552	\$ 12,934	\$ 25,680
156745	Georgetown College	KY	Baccalaureate Colleges: Arts & Sciences Focus	1061	706	1767	1213	\$ 13,814,428	\$ 11,389	\$ 39,606,258	\$ 32,887,796	67	11	297	\$ 6,498,247	\$ 13,770	\$ 35,650
203085	Heidelberg University	OH	Master's Colleges & Universities: Small Programs	1051	150	1201	1277	\$ 16,623,194	\$ 13,017	\$ 48,936,849	\$ 33,772,630	67	13	371	\$ 5,848,410	\$ 13,436	\$ 29,200
203128	Hiram College	OH	Baccalaureate Colleges: Arts & Sciences Focus	1210	11	1221	975	\$ 15,902,898	\$ 16,311	\$ 74,938,994	\$ 32,773,385	70	10	207	\$ 3,984,935	\$ 13,789	\$ 33,040
162760	Hood College	MD	Master's Colleges & Universities: Larger Programs	1128	984	2112	1571	\$ 23,270,229	\$ 14,812	\$ 91,295,043	\$ 40,629,312	78	10	219	\$ 4,816,591	\$ 14,546	\$ 36,540
213251	Juniata College	PA	Baccalaureate Colleges: Arts & Sciences Focus	1485	10	1495	1521	\$ 27,003,421	\$ 17,754	\$ 115,779,230	\$ 55,806,576	81	12	394	\$ 10,702,974	\$ 15,005	\$ 42,170
157076	Kentucky Wesleyan College	KY	Baccalaureate Colleges: Diverse Fields	716		716	676	\$ 7,782,755	\$ 11,513	\$ 36,092,016	\$ 17,024,871	68	13	194	\$ 1,187,286	\$ 17,930	\$ 24,050
220516	King University	TN	Master's Colleges & Universities: Larger Programs	1799	363	2162	2724	\$ 28,455,202	\$ 10,446	\$ 36,725,864	\$ 36,335,767	70	13	157	\$ 2,527,868	\$ 11,175	\$ 27,276
213507	Lebanon Valley College	PA	Master's Colleges & Universities: Small Programs	1756	154	1910	1777	\$ 33,789,412	\$ 19,015	\$ 60,470,033	\$ 55,973,847	81	10	428	\$ 10,077,578	\$ 17,004	\$ 40,550
203845	Marietta College	OH	Baccalaureate Colleges: Diverse Fields	1065	80	1145	1276	\$ 22,746,252	\$ 17,826	\$ 76,865,482	\$ 40,722,422	67	9	245	\$ 4,357,837	\$ 17,543	\$ 35,330
220710	Maryville College	TN	Baccalaureate Colleges: Arts & Sciences Focus	1181		1181	1261	\$ 12,074,256	\$ 9,575	\$ 69,951,350	\$ 31,546,306	72	13	323	\$ 7,090,730	\$ 11,571	\$ 33,524
204264	Muskingum University	OH	Master's Colleges & Universities: Medium Programs	1558	811	2369	1692	\$ 20,815,143	\$ 12,302	\$ 73,644,000	\$ 38,087,368	75	12	319	\$ 5,170,936	\$ 10,718	\$ 26,928
215798	Saint Vincent College	PA	Baccalaureate Colleges: Arts & Sciences Focus	1667	198	1865	1817	\$ 26,457,656	\$ 14,561	\$ 98,817,264	\$ 55,248,013	86	11	391	\$ 8,628,199	\$ 11,359	\$ 33,426
215947	Seton Hill University	PA	Master's Colleges & Universities: Medium Programs	2092	378	2470	2226	\$ 32,375,322	\$ 14,544	\$ 37,824,970	\$ 48,952,866	85	14	365	\$ 7,119,661	\$ 14,014	\$ 33,520
216357	Thiel College	PA	Baccalaureate Colleges: Arts & Sciences Focus	766		766	874	\$ 11,261,765	\$ 12,885	\$ 33,657,060	\$ 27,982,593	55	11	277	\$ 4,547,217	\$ 13,324	\$ 29,740
237312	University of Charleston	WV	Master's Colleges & Universities: Small Programs	1831	650	2481	1967	\$ 28,501,215	\$ 14,490	\$ 41,228,715	\$ 42,935,400	59	15	297	\$ 6,514,962	\$ 7,964	\$ 29,900
234164	Virginia Union University	VA	Baccalaureate Colleges: Arts & Sciences Focus	1295	379	1674	1824	\$ 20,277,854	\$ 11,117	\$ 32,305,068	\$ 37,499,016	52	16	365	\$ 1,332,041	\$ 13,385	\$ 17,034
234173	Virginia Wesleyan University	VA	Baccalaureate Colleges: Arts & Sciences Focus	1436	34	1470	1441	\$ 22,033,001	\$ 15,290	\$ 56,770,385	\$ 39,562,770	63	12	368	\$ 6,618,053	\$ 17,626	\$ 35,610
216807	Westminster College	PA	Baccalaureate Colleges: Arts & Sciences Focus	1191	72	1263	1282	\$ 15,683,750	\$ 12,234	\$ 117,825,639	\$ 39,487,844	78	11	366	\$ 8,181,041	\$ 12,857	\$ 35,210
238078	Wheeling Jesuit University	WV	Master's Colleges & Universities: Medium Programs	719	405	1124	974	\$ 17,032,614	\$ 17,487	\$ 12,968,989	\$ 36,939,829	64	13	222	\$ 3,803,877	\$ 10,975	\$ 28,110
206507	Wilmington College	OH	Baccalaureate Colleges: Diverse Fields	1169		1169	1127	\$ 12,430,170	\$ 11,029	\$ 37,118,706	\$ 25,498,787	68	14	310	\$ 3,674,296	\$ 13,147	\$ 25,000
	Count			30	25	30	30	30	30	30	30	30	30	30	30	30	30
	75%tile			1722.25	405	2024.5	1822.25	\$ 26,248,129	\$ 14,725	\$ 74,615,246	\$ 42,745,548	79.5	13.75	370.25	\$ 7,143,630	\$ 14,640	\$ 34,833
	Median			1356	226	1636	1546	\$ 20,911,190	\$ 13,149	\$ 51,584,359	\$ 37,373,122	70	13	321	\$ 5,950,584	\$ 13,236	\$ 31,388
	25%tile			1080.75	72	1186	1148.5	\$ 15,738,537	\$ 11,185	\$ 38,016,314	\$ 33,367,493	67	11	278.75	\$ 3,849,142	\$ 11,412	\$ 27,381
237969	West Virginia Wesleyan College	WV	Master's Colleges & Universities: Small Programs	1320	129	1449	1420	\$ 16,409,889	\$ 11,556	\$ 47,365,380	\$ 34,445,811	74	13	387	\$ 7,813,478	\$ 9,562	\$ 29,752



	<b>Criterion by Category</b>													
	Control:	Private												
	State:	KY, OH, PA, TN, VA, WV, MD												
	Carnegie Classification 2010 Basic:	BA Arts and Science, BA Diverse Fields, MA University Smaller, MA University Medium												
	Carnegie Classification 2010 Undergraduate Profile:	Full-time, 4 year, Selective, Lower Transfer Students												
		Full-time, 4 year, Selective, Higher Transfer Students												
		Full-time, 4 year, More Selective, Lower Transfer Students												
		Full-time, 4 year, More Selective, Higher Transfer Students												
	Carnegie Classification 2010 Enrollment Profile:	Only Undergraduate 4 year, Very High Undergraduate, High Undergraduate												
	Carnegie Classification 2010 Size and Setting:	Very Small 4 year Primarily Residential												
		Very Small 4 year Highly Residential												
		Small 4 year Primarily Residential												
		Small 4 year Highly Residential												
	Total Enrollment Fall 2010:	800 - 3000 Students												
	Value of Endowment Assets End of 2009-10 Academic Year:	20 Million - 100 Million												
	Total Expenses 2009-10 Academic Year:	Below \$50 Million												

Schools Approved by the Board of Trustees, January 2012

Compiled by OIR, Data Source IPEDS Data Center updated summer 2019